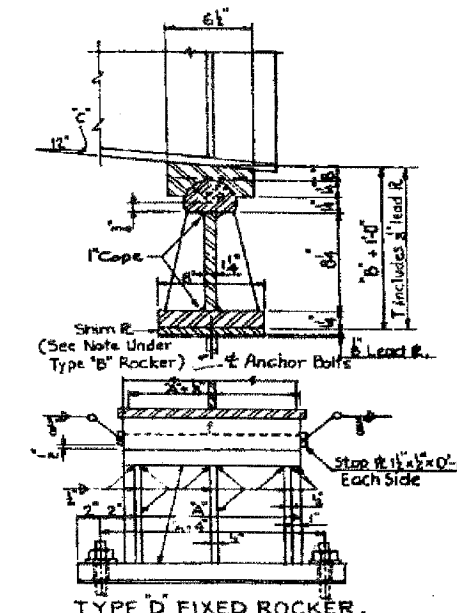


ROCKER SCHEDULE

SPAN	GIRDER	SOUTH END				NORTH END				PIER	GIRDER	SOUTH END				NORTH END				SPAN	GIRDER	SOUTH END				NORTH END					
		ROCKER TYPE	A	B	C	T	ROCKER TYPE	A	B			C	T	ROCKER TYPE	A	B	C	T	ROCKER TYPE			A	B	C	T	ROCKER TYPE	A	B	C	T	
11	GR-1	C	13	1 1/2	3/8	0-7 3/4	B	13	1 1/2	3/8	1-1 1/2	22, 26	GL-1, GR-1	B	11	1 1/2	3/8	1-1 1/2	29	GL-2 to 5 & 10	B	13	1 1/2	3/8	1-1 1/2	C	13	1 1/2	3/8	0-7 3/4	
	GR-2 to 10, 11, 12	"	"	"	"	"	"	"	"	"	"		GL-1, GR-1	"	"	"	"	"		"	GL-1, 6 to 9 & 13	"	"	"	"	"	"	"	"	"	"
12	GR-1	B	"	"	"	0-8	C	"	"	"	0-7 3/4	23, 25	GL-1, GR-1	A	15	1 1/2	3/8	1-6	30	GR-2 to 5 & 9 to 11	"	"	"	"	"	"	"	"	"	"	"
	GR-2 to 5	"	"	"	"	"	"	"	"	"	"		GL-2 to 5, GR-2 to 5	"	"	"	"	"		"	GR-6 to 8	"	"	"	"	"	"	"	"	"	"
13	GR-1	C	"	"	"	0-7 3/4	B	"	"	"	1-1 1/2	24	GL-6 to 8, GR-6 to 9	"	"	"	"	0-8 1/2	31	GR-10, 11, 12	"	"	"	"	"	"	"	"	"	"	
	GR-2 to 5	"	"	"	"	"	"	"	"	"	"		GL-1, GR-1, 10, 11	C	15	2 1/2	3/8	0-8 1/2		GR-1	"	"	"	"	"	"	"	"	"	"	"
14	GR-1	B	"	"	"	1-1 1/2	C	"	"	"	0-7 3/4	SPAN	GR-12	"	"	"	"	0-8 1/2	31	GR-2 to 5 & 9, 11	"	"	"	"	"	"	"	"	"	"	
	GR-2 to 5	"	"	"	"	"	"	"	"	"	"		GL-12	"	"	"	"	"		"	GR-6 to 8	"	"	"	"	"	"	"	"	"	"
15, 19	GR-1	B	11	1 1/2	3/8	1-1 1/2	"	"	"	"	0-7 3/4	26	GL-2 to 5	B	13	1 1/2	3/8	1-1 1/2	31	GL-2 to 5 & 2, 8, 10	"	"	"	"	"	"	"	"	"	"	
	GR-2 to 5	"	"	"	"	"	"	"	"	"	"		GL-1, 6, 7, 8	"	"	"	"	"		"	GL-5	"	"	"	"	"	"	"	"	"	"
16, 18	GR-1	A	15	1 1/2	3/8	1-6	"	"	"	"	1-6	27	GR-1 to 5	"	"	"	"	1-1 1/2	31	GR-12, 9	"	"	"	"	"	"	"	"	"	"	
	GR-2 to 5	"	"	"	"	"	"	"	"	"	"		GR-6 to 8	"	"	"	"	"		"	GR-2 to 5 & 2, 8, 10	"	"	"	"	"	"	"	"	"	"
17	GR-1	C	15	2 1/2	3/8	0-8 1/2	"	"	"	"	0-8 1/2	27	GL-9	"	"	"	"	1-1 1/2	31	GR-6 to 7	"	"	"	"	"	"	"	"	"	"	
	GR-2 to 5	"	"	"	"	"	"	"	"	"	"		GL-10, 11	"	"	"	"	"		"	GL-2 to 5 & 2, 8, 10	"	"	"	"	"	"	"	"	"	"
19	GR-1	B	13	1 1/2	3/8	1-1 1/2	C	13	1 1/2	3/8	0-7 3/4	28	GL-12, 15	"	"	"	"	0-7 3/4	31	GL-2 to 5 & 2, 8, 10	"	"	"	"	"	"	"	"	"	"	
	GR-2 to 5	"	"	"	"	"	"	"	"	"	"		GL-14, 15	"	"	"	"	"		"	GL-5	"	"	"	"	"	"	"	"	"	"
20	GR-1	C	"	"	"	0-7 3/4	B	"	"	"	1-1 1/2	28	GL-1, 6, 7, 9, 11, 12, 15	C	"	"	"	0-8	31	GR-12, 9	"	"	"	"	"	"	"	"	"		
	GR-2 to 5	"	"	"	"	"	"	"	"	"	"		GL-2 to 5, 8, 13, 14	"	"	"	"	"		"	GR-6 to 7	"	"	"	"	"	"	"	"	"	



CITY OF CHICAGO
DEPARTMENT OF PUBLIC WORKS
BUREAU OF ENGINEERING
SOUTH ROUTE SUPERHIGHWAY
SECTION NO. 52523-3-4H
SECTION NO. 52523-3-4HF
W. CERMAK RD. TO W. IQUIN ST.
ROCKER DETAILS
CONSOER, TOWNSEND & ASSOCIATES
CONSULTING ENGINEERS
CHICAGO, ILLINOIS

REVISIONS	
NAME	DATE

ILLINOIS DEPARTMENT OF TRANSPORTATION
F.A.I. 94/90 (DAN RYAN EXPRESSWAY)
DAN RYAN ELEVATED BRIDGE
BEARING REPLACEMENT & STEEL REPAIR
EXISTING PLAN INFORMATION
SN 016-1112
SCALE: NTS
DATE: 5/18/2007
DRAWN BY: LAM
CHECKED BY: BLU

FOR INFORMATION ONLY

BOWMAN, BARRETT & ASSOCIATES INC.
CONSULTING ENGINEERS
Chicago, Illinois
312.228.0100
www.bbanc.com

5/24/2007 5:06:03 PM