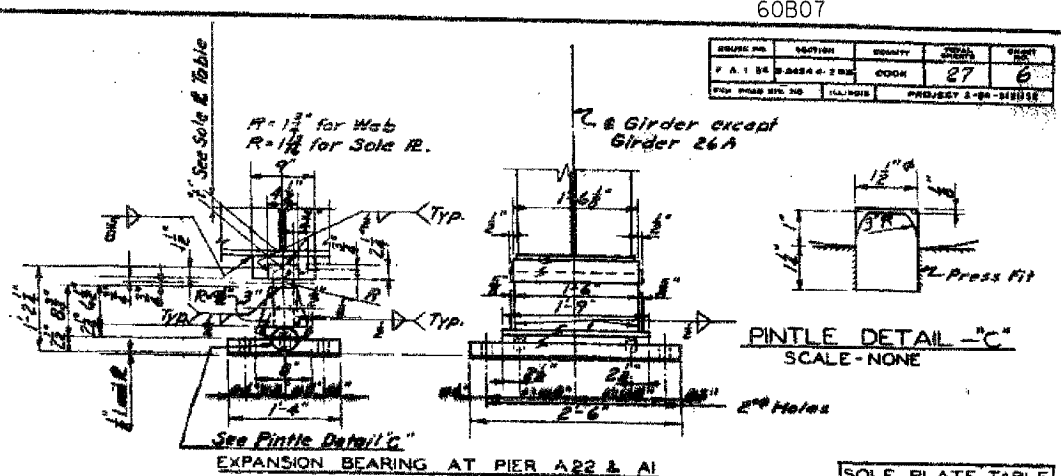
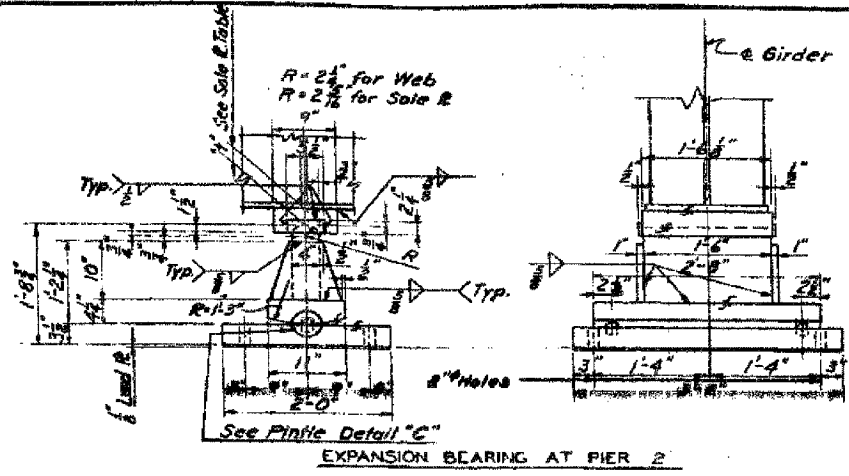
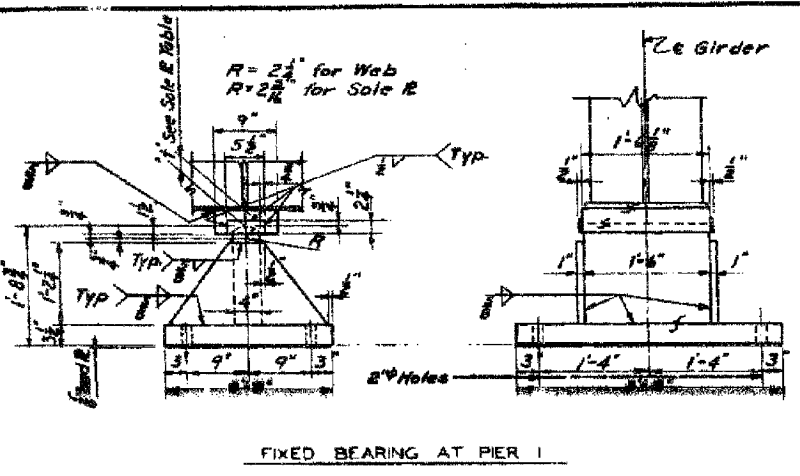


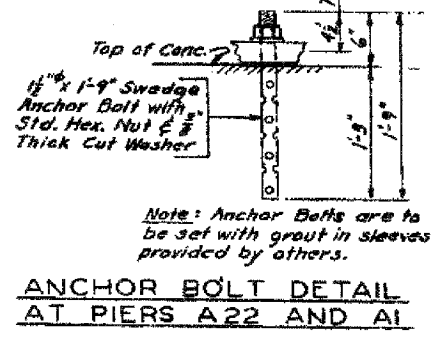
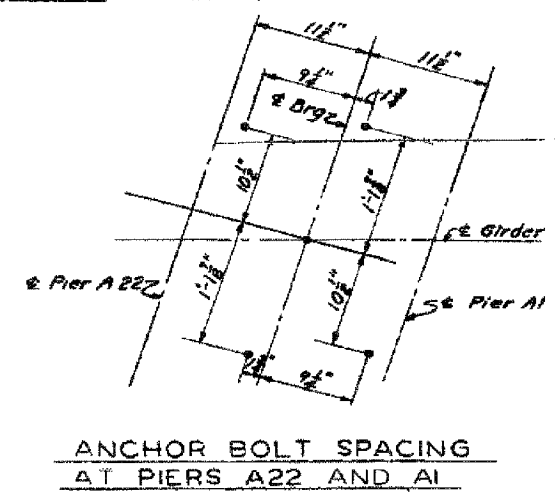
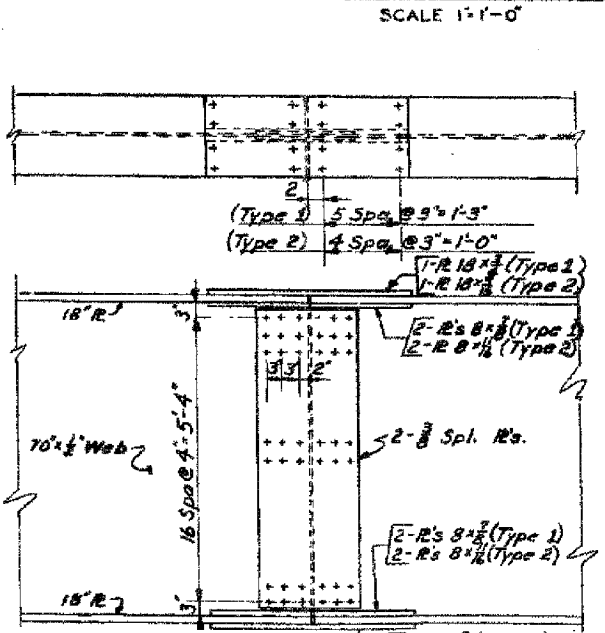
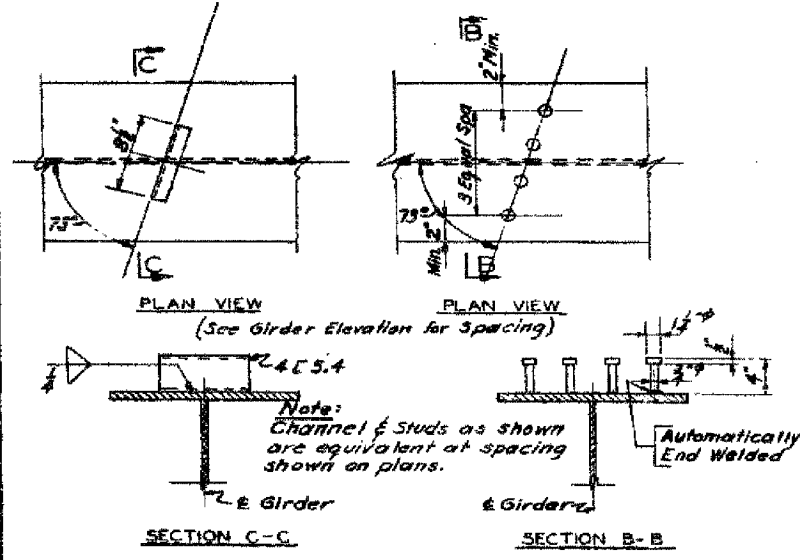
60B07

REVISED NO.	REVISION	DATE	BY	CHECKED
1	A.1 24	8/28/04	2RB	COOK
2				27
3				6



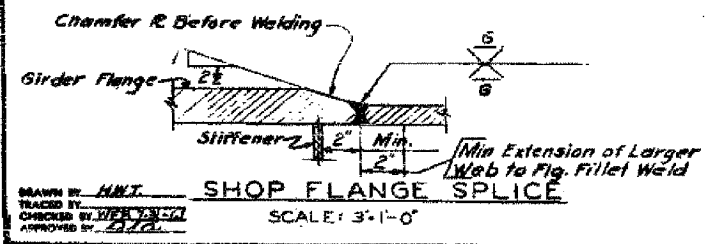
**PINTLE DETAIL - "C"**  
SCALE - NONE

**BEARING DETAILS**  
SCALE 1" = 1'-0"



**SOLE PLATE TABLE**

Str	Pier A22	Pier 1	Pier 2	Pier A1
1	1 1/2	4 1/2	3 1/2	2 1/2
2	1 1/2	3 1/2	3 1/2	2
3	1 1/2	2 1/2	2 1/2	1 1/2
4	1 1/2	4 1/2	4 1/2	2
5	1 1/2	3 1/2	3 1/2	1 1/2
6	2 1/2	3 1/2	3 1/2	1 1/2
7	1 1/2	2 1/2	2 1/2	1 1/2
8	1 1/2	4 1/2	4 1/2	1 1/2
9	1 1/2	3 1/2	3 1/2	1 1/2
10	1 1/2	2 1/2	2 1/2	1 1/2
11	1 1/2	4 1/2	4 1/2	1 1/2
12	1 1/2	3 1/2	3 1/2	1 1/2
13	1 1/2	2 1/2	2 1/2	1 1/2
14	1 1/2	3 1/2	3 1/2	1 1/2
15	1 1/2	2 1/2	2 1/2	1 1/2
16	1 1/2	3 1/2	3 1/2	1 1/2
17	1 1/2	2 1/2	2 1/2	1 1/2
18	1 1/2	3 1/2	3 1/2	1 1/2
19	1 1/2	4 1/2	4 1/2	1 1/2
20	1 1/2	2 1/2	2 1/2	1 1/2
21	1 1/2	4 1/2	4 1/2	1 1/2
22	1 1/2	4 1/2	3 1/2	1 1/2
23	1 1/2	2 1/2	2 1/2	1 1/2
24	1 1/2	5 1/2	3 1/2	1 1/2
25	1 1/2	4 1/2	3 1/2	1 1/2
26	1 1/2	2 1/2	2 1/2	1 1/2
26A	1 1/2	-	-	-



Work Sheets 4 thru 8 Together  
CITY OF CHICAGO  
DEPARTMENT OF PUBLIC WORKS  
BUREAU OF ENGINEERING  
SOUTH ROUTE SUPERHIGHWAY  
SECTION S-2424.4-2RB  
CHICAGO RIVER BRIDGE

**STRUCTURAL STEEL**

HAZLET & EDAL - CONSULTING ENGINEERS  
CHICAGO, ILLINOIS

SCALE AS SHOWN  
DATE: 8/20/04  
SHEET NO. 6 OF 27 SHEETS

REVISIONS	NAME	DATE

ILLINOIS DEPARTMENT OF TRANSPORTATION  
F.A.I. 94/90 (DAN RYAN EXPRESSWAY)  
DAN RYAN ELEVATED BRIDGE  
BEARING REPLACEMENT & STEEL REPAIR  
EXISTING PLAN INFORMATION  
SN 016-1114, SN 016-1067, SN 016-1070  
SCALE: NTS  
DATE: 5/18/2007  
DRAWN BY: LAM  
CHECKED BY: BLU

FOR INFORMATION ONLY