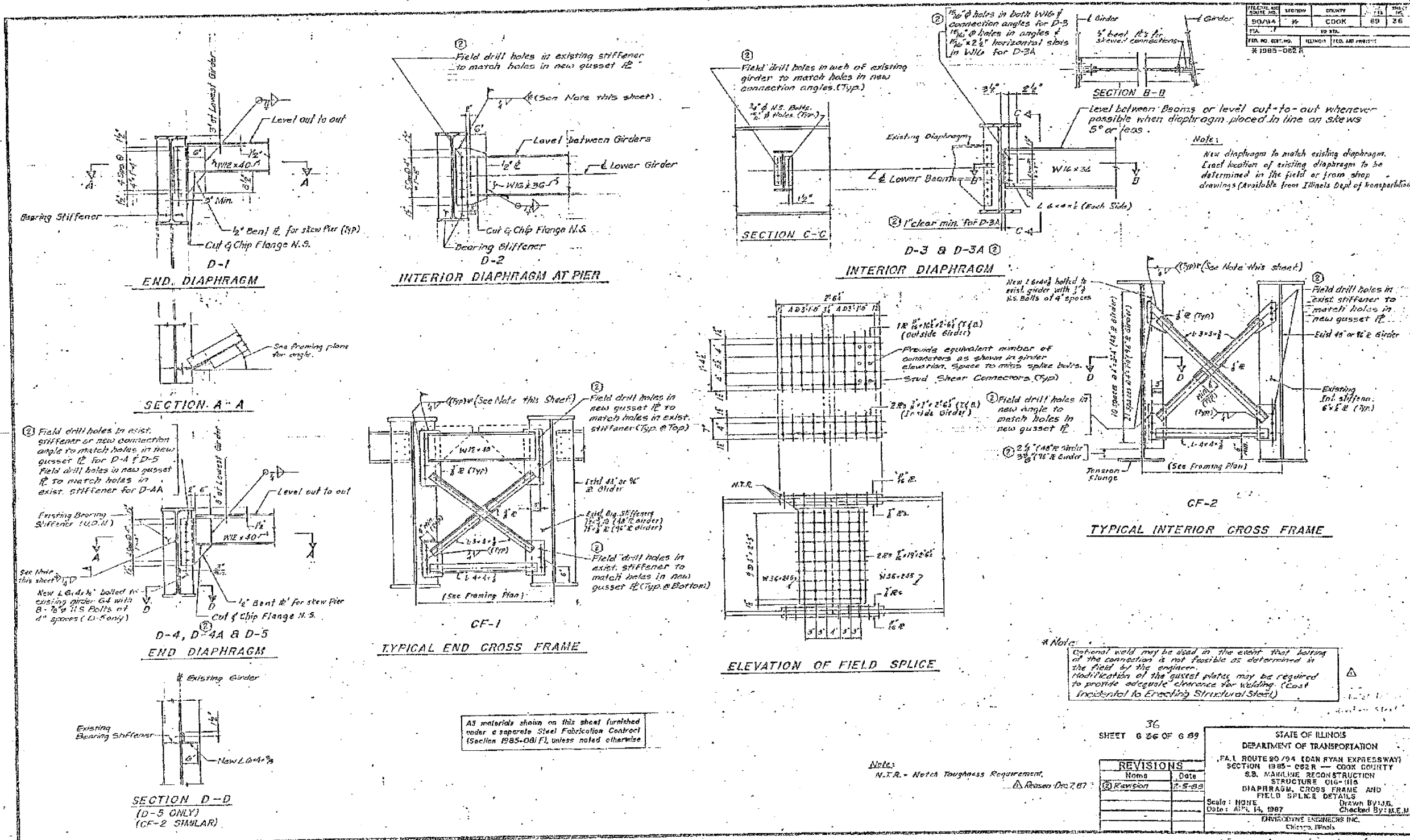


60B07

PROJECT NO.	SECTION	COUNTY	DATE
94/90	2005-086 I	COOK	6/26/07
STA.	TO STA.		
FED. ROAD DIST. NO.	ILLINOIS FED. AID PROJECT		



Notes:
 New diaphragm to match existing diaphragm. Exact location of existing diaphragm to be determined in the field or from shop drawings (Available from Illinois Dept of Transportation)

Note:
 Optional weld may be used in the event that bolting of the connection is not feasible as determined in the field by the engineer. Modification of the gusset plates may be required to provide adequate clearance for welding (Cost Incidental to Erecting Structural Steel)

All materials shown on this sheet furnished under a separate Steel Fabrication Contract (Section 1985-081 F), unless noted otherwise

Notes:
 N.T.R. - Notch Toughness Requirement.
 Reason Dec 7, 87

36
 SHEET 626 OF 689

REVISIONS	NAME	DATE
1	Kawson	2-5-88

STATE OF ILLINOIS
 DEPARTMENT OF TRANSPORTATION
 F.A.I. ROUTE 90/94 (DAN RYAN EXPRESSWAY)
 SECTION 1985-082 R - COOK COUNTY
 S.B. MAINLINE RECONSTRUCTION
 STRUCTURE 016-1115
 DIAPHRAGM, CROSS FRAME AND
 FIELD SPLICE DETAILS
 Scale: NONE
 Date: APR 14, 1987
 Drawn By: J.G.
 Checked By: M.E.U.
 ENGINEERS INC.
 Chicago, Illinois

ILLINOIS DEPARTMENT OF TRANSPORTATION
 F.A.I. 94/90 (DAN RYAN EXPRESSWAY)
 DAN RYAN ELEVATED BRIDGE
 BEARING REPLACEMENT & STEEL REPAIR
 EXISTING PLAN INFORMATION
 SN 016-1115
 SCALE: NTS
 DATE: 5/18/2007
 DRAWN BY: LAM
 CHECKED BY: BLU

FOR INFORMATION ONLY

5/24/2007 5:46:46 PM