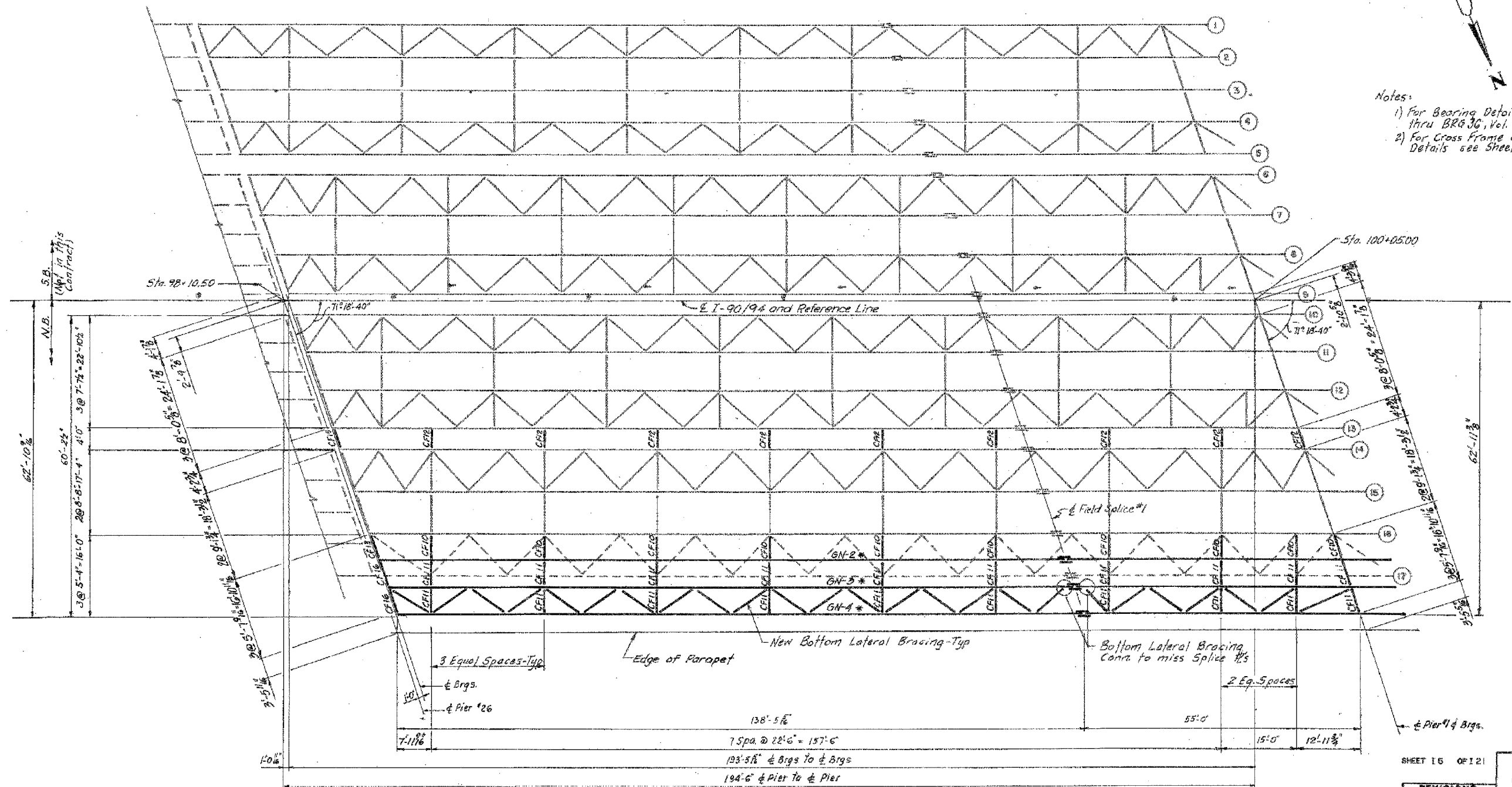


| | | | | |
|---------------------|------------|------------------|--------------|-----------|
| F.A.I. | SECTION | COUNTY | TOTAL SHEETS | SHEET NO. |
| 94/90 | 2005-086 I | COOK | 228 | 191 |
| STA. | TO STA. | | | |
| FED. ROAD DIST. NO. | ILLINOIS | FED. AID PROJECT | | |

60B07

- Notes:
- 1) For Bearing Details see Sheets BRG 32 thru BRG 36, Vol. #13
 - 2) For Cross Frame and Bottom Lateral Bracing Details see Sheet 11.



ALL NEW MATERIALS SHOWN ON THIS SHEET ARE FURNISHED UNDER A SEPARATE STEEL FABRICATION CONTRACT (SECTION 1988-003F), UNLESS NOTED OTHERWISE.

PLAN - SPAN - 1 (N.B.)

LEGEND
 * To be removed (N.B. only)
 * New Plate girder (for size & length See Sheet 19)

SHEET 16 OF 121

| REVISIONS | |
|-----------|------|
| Name | Date |
| | |
| | |
| | |
| | |

STATE OF ILLINOIS
 DEPARTMENT OF TRANSPORTATION
 F.A.I. ROUTE 90/94 (DAN RYAN EXPRESSWAY)
 SECTION 985-078-COOK COUNTY
 N.B. MAINLINE RECONSTRUCTION
 STRUCTURE DIS-116
 FRAMING PLAN SPAN 1
 Date: AUG 1993
 Drawn By: AVP
 Checked By: JAW
 ENVIRONMENTAL ENGINEERS INC.
 Chicago, Illinois

| REVISIONS | NAME | DATE |
|-----------|------|------|
| | | |
| | | |
| | | |
| | | |

ILLINOIS DEPARTMENT OF TRANSPORTATION
 F.A.I. 94/90 (DAN RYAN EXPRESSWAY)
 DAN RYAN ELEVATED BRIDGE
 BEARING REPLACEMENT & STEEL REPAIR
 EXISTING PLAN INFORMATION
 SN 016-1116
 SCALE: NTS
 DATE: 5/18/2007
 DRAWN BY: LAM
 CHECKED BY: BLU

BOWMAN, BARRETT & ASSOCIATES INC.
 CONSULTING ENGINEERS
 Chicago, Illinois
 312.228.0100
 www.bbainc.com

FOR INFORMATION ONLY

5/24/2007 5:46:50 PM