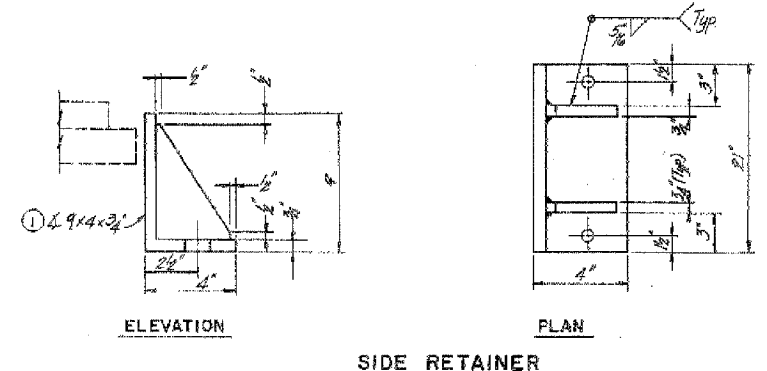


Notes: 1. He - Height of Bearing Assembly
 He - Height of Bolster Assembly including 1/8" Lead Plate.

STRUCTURE NO.	PIER LOCATION	GIRDER NO.	NO. REQ'D	BRG. TYPE	REMARKS
016-1116	1	AN-2, AN-3, AN-4	3	II	

ALL MATERIALS SHOWN ON THIS SHEET ARE FURNISHED UNDER A SEPARATE SUPPLY CONTRACT (SECTION 1988-004 I), UNLESS NOTED OTHERWISE.



① Equivalent welded Plates will be allowed in lieu of rolled Angles with Stiffeners. ⚠

FOR INFORMATION ONLY

SHEET BRG 35 OF 51

STATE OF ILLINOIS
 DEPARTMENT OF TRANSPORTATION
 F.A.I. ROUTE 90 / 94 (DAN RYAN EXPRESSWAY)
 SECTION 1985-0775-R - COOK COUNTY
 N.B. MAINLINE RECONSTRUCTION
 BEARINGS - STRUCTURE NO. 016-1116
 BOLSTER DETAILS

Scale: None
 Date: AUGUST, 1988
 Drawn By: D.C.
 Checked By: H.S.
 ENVIRODYNE ENGINEERS INC.
 Chicago, Illinois

REVISIONS	NAME	DATE

ILLINOIS DEPARTMENT OF TRANSPORTATION
 F.A.I. 94/90 (DAN RYAN EXPRESSWAY)
 DAN RYAN ELEVATED BRIDGE
 BEARING REPLACEMENT & STEEL REPAIR
 EXISTING PLAN INFORMATION
 SN 016-1116

SCALE: NTS
 DATE: 5/18/2007
 DRAWN BY: LAM
 CHECKED BY: BLU

BOWMAN, BARRETT & ASSOCIATES INC.
 CONSULTING ENGINEERS
 Chicago, Illinois
 312.228.0100
 www.bbainc.com

12-1-BB

5/24/2007 5:05 PM