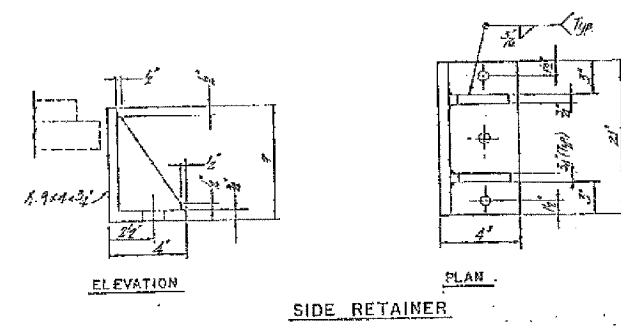
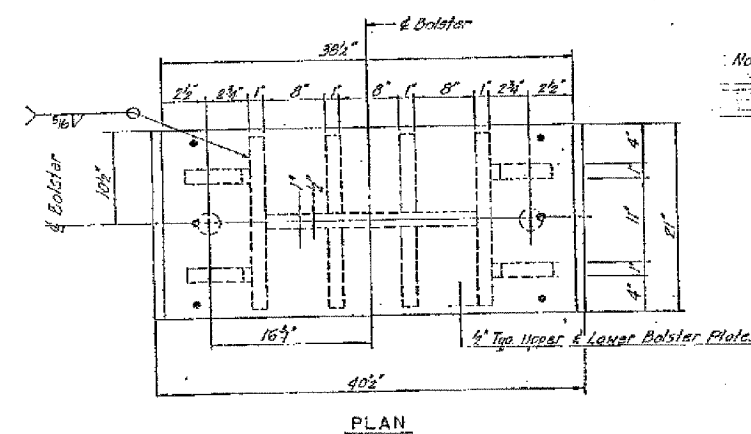
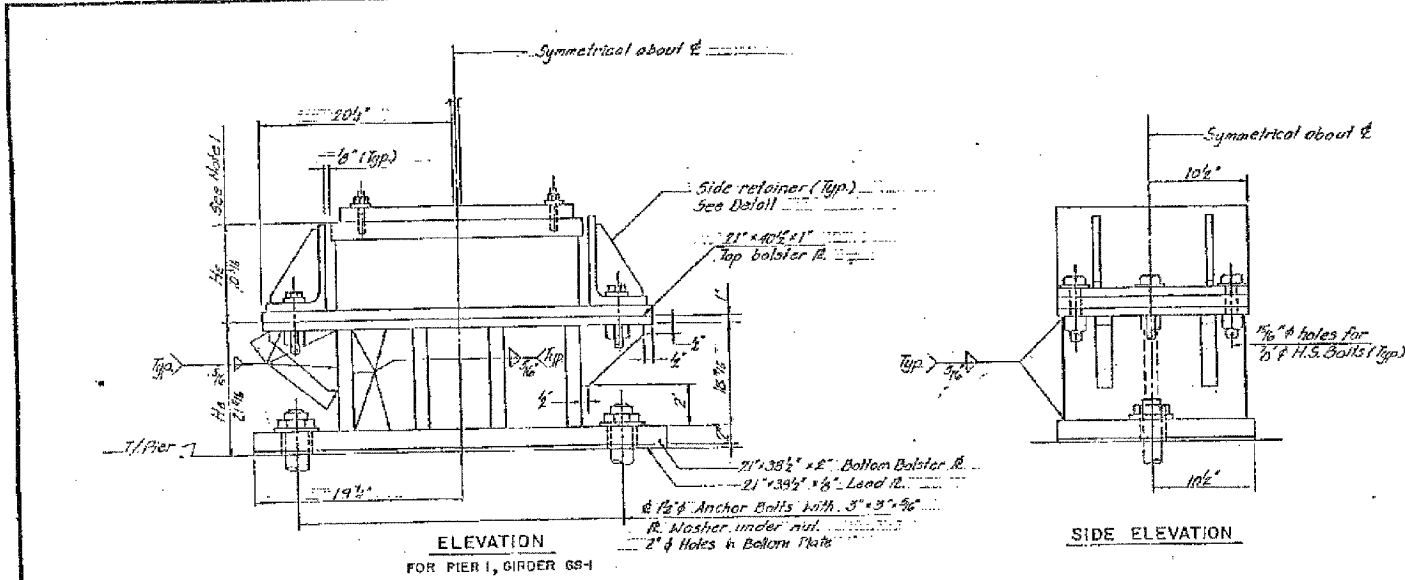


60B07

SECTION	NO.	TOTAL SHEETS	SHEET NO.
2005-086 I	K	228	201
STA.		TO STA.	
FED. ROAD DIST. NO.		FED. AID PROJECT	



SHIM THICKNESS SCHEDULE - EXISTING GIRDERS

STRUCTURE NO.	PIER LOCATION	GIRDER NO.												
		1	2	3	4	5	6	7	8	9	10	11	12	13
016-1117	26(S)	0	0	0	0	1/16	0	1/16	0	0	0	0	0	0
	151	0	0	0	0	0	0	0	0	0	0	0	0	0
	16(S)	0	0	3/8	0	0	2/8	0	0	0	0	0	0	0
	14(N)	0	0	0	0	1/8	0	0	0	0	0	0	0	0
	15(S)	0	0	0	0	0	0	0	0	0	0	0	0	0
016-1067	A1(S)	0	0	0	0	0	0	0	0	0	0	0	0	0
	AJ(N)	2 3/8	1 5/8	3/4	1 1/8	1 5/8	1 5/8	1 5/8	1 5/8	1 5/8	1 5/8	1 5/8	1 5/8	1 5/8
	A6(S)	1	0	0	0	1 1/8	1	0	0	0	0	0	0	0
	A4(N)	0	0	1 1/2	0	0	0	0	0	0	0	0	0	0
	A13(S)	1 1/8	0	0	0	1 3/8	0	0	0	0	0	0	0	0
016-1116	A16(S)	2 1/2	1 1/2	1 1/2	1 1/2	1 1/2	1 1/2	1 1/2	1 1/2	1 1/2	1 1/2	1 1/2	1 1/2	1 1/2
	B(S)	0	0	0	0	0	0	0	0	0	0	0	0	0

\* Shims has been revised. See sheet BRG-4 for details and for additional shims.  
 † Shims no longer required at this location.

SHIM THICKNESS SCHEDULE - ROADWAY WIDENING GIRDERS

STRUCTURE NO.	PIER NO.	GA-1			GA-2			STRUCTURE NO.	PIER NO.	GS-1		GS-2	
		GA-1	GA-2	GA-3	GA-1	GA-2	GA-3			GS-1	GS-2		
016-1067	A6(N)	5/16	0	0	0	0	0	016-1117	14(N)	0	1 1/2	0	0
	A13(S)	1 1/8	1 1/8	0	0	0	0		16(S)	1 1/8	0	0	0
	A13(N)	0	0	0	0	0	0		17(S)	3/8	0	0	0
	A16(S)	3/4	0	0	0	0	0		20(N)	1 1/8	0	0	0
								21(N)	3/8	0	0	0	
								25(N)	5/8	0	0	0	

BOLSTER SCHEDULE

STRUCTURE NO.	PIER LOCATION	GIRDER NO.	NO. REQ'D	BRG. TYPE	REMARKS
016-1116	1	GS-1	1	IL	

ALL MATERIALS SHOWN ON THIS SHEET ARE FURNISHED UNDER A SEPARATE SUPPLY CONTRACT (SECTION 1985-0-11), UNLESS NOTED OTHERWISE.

SHEET BRG59 OF 48

REVISIONS	
Name	Date
(C) Revision	2-2-88

STATE OF ILLINOIS  
 DEPARTMENT OF TRANSPORTATION  
 F.A.I. ROUTE 50 / 94 (DAN RYAN EXPRESSWAY)  
 SECTION 1985-082 R - COOK COUNTY  
 S.B. MAINLINE RECONSTRUCTION  
 BEARINGS - STRUCTURE NO. 016-1116  
 BOLSTER DETAILS  
 AND SHIM SCHEDULES  
 Scale: None  
 Date: AUGUST 14, 1987  
 Drawn By: D.C.  
 Checked By: H.B.  
 ENVIRODYNE ENGINEERS INC.  
 Chicago, Illinois

FOR INFORMATION ONLY

BOWMAN, BARRETT & ASSOCIATES INC.  
 CONSULTING ENGINEERS  
 Chicago, Illinois  
 312.228.0100  
 www.bbainc.com

REVISIONS	
NAME	DATE

ILLINOIS DEPARTMENT OF TRANSPORTATION  
 F.A.I. 94/90 (DAN RYAN EXPRESSWAY)  
 DAN RYAN ELEVATED BRIDGE  
 BEARING REPLACEMENT & STEEL REPAIR  
 EXISTING PLAN INFORMATION  
 SN 016-1116  
 SCALE: NTS  
 DATE: 5/18/2007  
 DRAWN BY: LAM  
 CHECKED BY: BLU

5/24/2007 5:05 PM