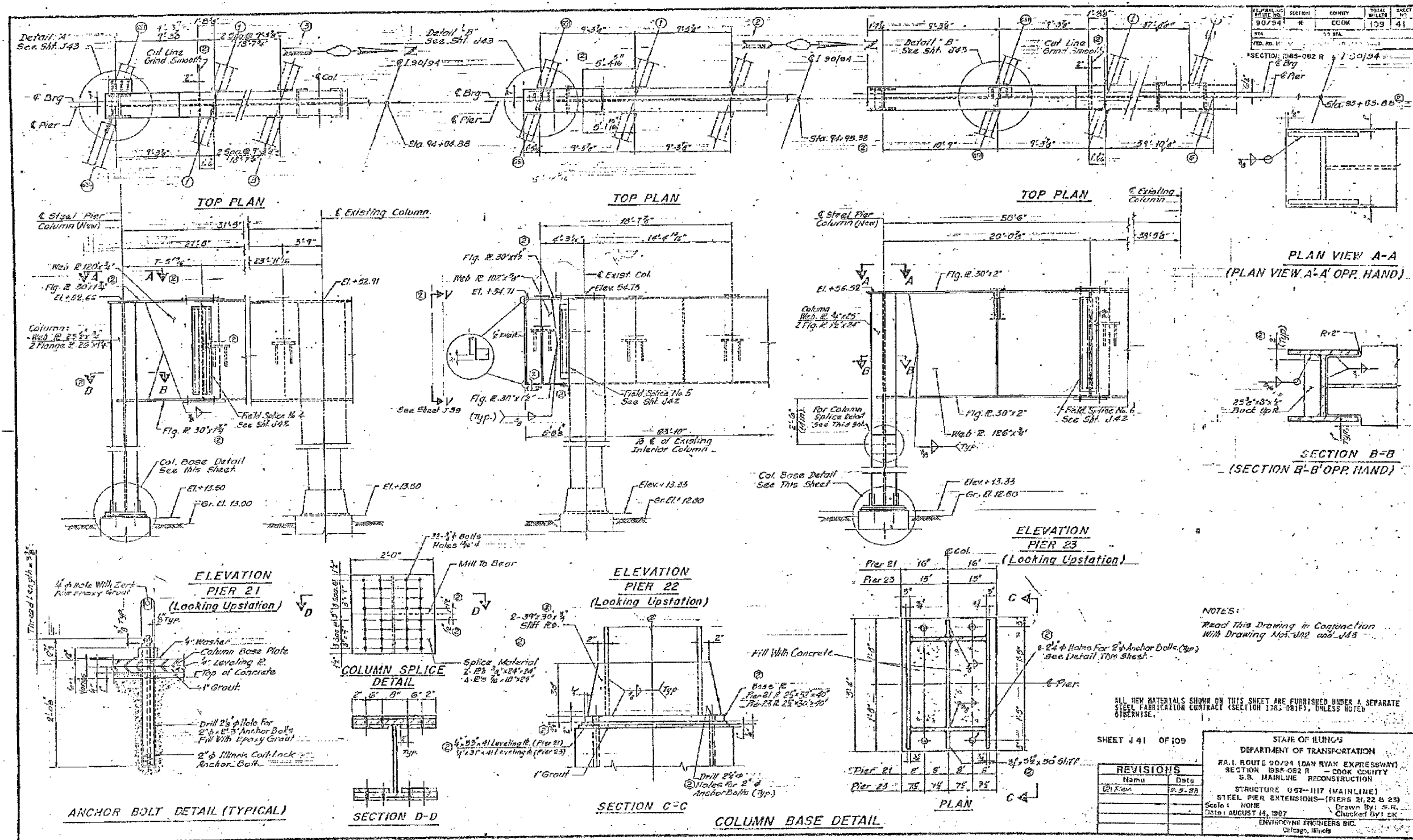


F.A.I.	SECTION	COUNTY	TOTAL SHEETS	SHEET NO.
94/90	2005-086 I	COOK	228	214
STA.		TO STA.		
FED. ROAD DIST. NO.		ILLINOIS	FED. AID PROJECT	

60B07



NOTES:
 Read This Drawing in Conjunction
 With Drawing Nos. J42 and J43

ALL NEW MATERIALS SHOWN ON THIS SHEET ARE FURNISHED UNDER A SEPARATE
 STEEL FABRICATION CONTRACT (SECTION 136-081F), UNLESS NOTED
 OTHERWISE.

SHEET J 41 OF 109

REVISIONS	
NO.	DATE

STATE OF ILLINOIS
 DEPARTMENT OF TRANSPORTATION
 F.A.I. ROUTE 90/94 (DAN RYAN EXPRESSWAY)
 SECTION 136-082 R - COOK COUNTY
 S.S. MAINLINE RECONSTRUCTION
 STRUCTURE 057-117 (MAINLINE)
 STEEL PIER EXTENSIONS - (PIERS 21, 22 & 23)
 Scale: NONE
 Date: AUGUST 14, 1987
 Drawn By: S.R.
 Checked By: S.K.
 ENVIRONMENTAL ENGINEERS INC.
 Chicago, Illinois

REVISIONS	
NAME	DATE

ILLINOIS DEPARTMENT OF TRANSPORTATION
 F.A.I. 94/90 (DAN RYAN EXPRESSWAY)
 DAN RYAN ELEVATED BRIDGE
 BEARING REPLACEMENT & STEEL REPAIR
 EXISTING PLAN INFORMATION
 SN 016-1117
 SCALE: NTS
 DATE: 5/18/2007
 DRAWN BY: LAM
 CHECKED BY: BLU

FOR INFORMATION ONLY

BOWMAN, BARRETT & ASSOCIATES INC.
 CONSULTING ENGINEERS
 Chicago, Illinois
 312.228.0100
 www.bbainc.com

15/08/0000 UNDOSE VASHEETS 600_214_016-1117-PROJ.DWG 5/24/2007 5:07:45 PM