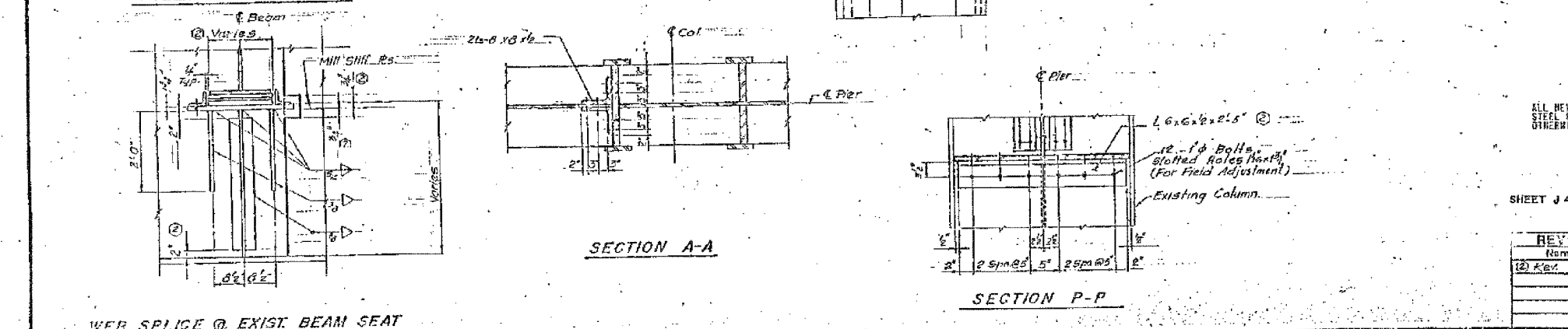
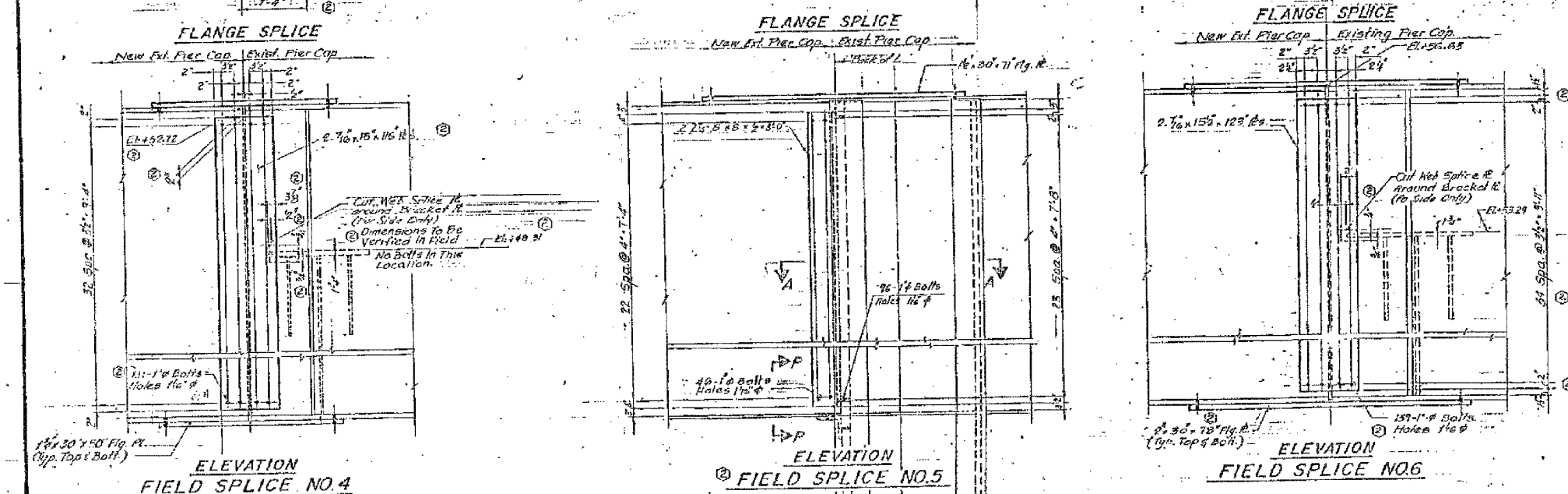
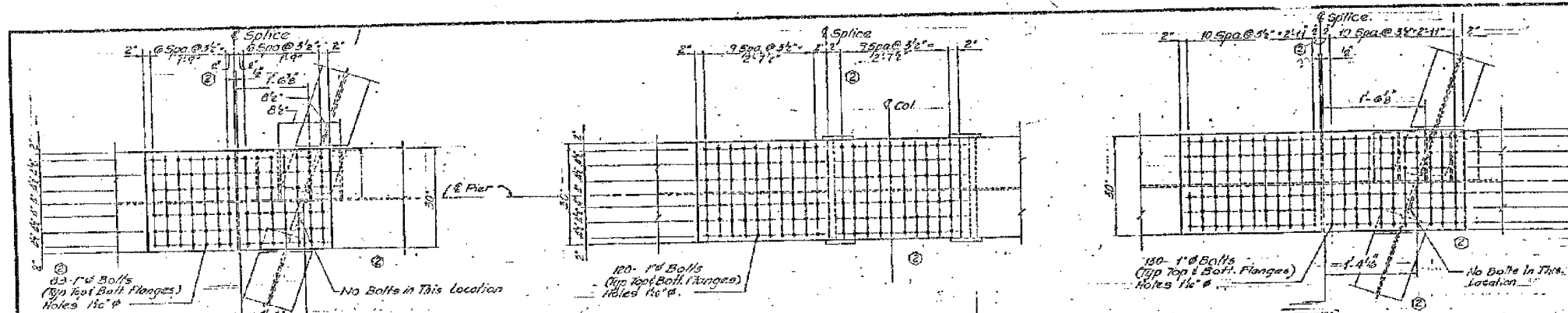


60B07

11	DRILLING	ELECTRIC	COUNTY	NO.	117
90/94	34	COOK	109	14	
STL	TO STA.				
FED. RD. DIST. NO.	ILLINOIS	FED. AID PROJECT			



NOTES:
 Read This Drawing In Conjunction With
 Drawing Nos. J21 & J43

ALL NEW MATERIALS SHOWN ON THIS SHEET ARE FURNISHED UNDER A SEPARATE STEEL FABRICATION CONTRACT (SECTION 1965-081F), UNLESS NOTED OTHERWISE.

SHEET J 42 OF 100

REVISIONS	
NO.	DATE
12	2-5-08

STATE OF ILLINOIS
 DEPARTMENT OF TRANSPORTATION
 F.A.I. ROUTE 00/94 (DAN RYAN EXPRESSWAY)
 SECTION 1965-082 R - COOK COUNTY
 S.B. MAINLINE RECONSTRUCTION
 STRUCTURE 016-1117 (MAINLINE)
 STEEL PIER DETAILS - (PIERS 2, 22, & 23)
 Scale: NONE
 Date: AUGUST 14, 1997
 Checked By: SP

REVISIONS	
NAME	DATE

ILLINOIS DEPARTMENT OF TRANSPORTATION
 F.A.I. 94/90 (DAN RYAN EXPRESSWAY)
 DAN RYAN ELEVATED BRIDGE
 BEARING REPLACEMENT & STEEL REPAIR
 EXISTING PLAN INFORMATION
 SN 016-1117
 SCALE: NTS
 DATE: 5/18/2007
 DRAWN BY: LAM
 CHECKED BY: BLU

FOR INFORMATION ONLY

BOWMAN, BARRETT & ASSOCIATES INC.
 CONSULTING ENGINEERS
 Chicago, Illinois
 312.228.0100
 www.bbainc.com

5/24/2007