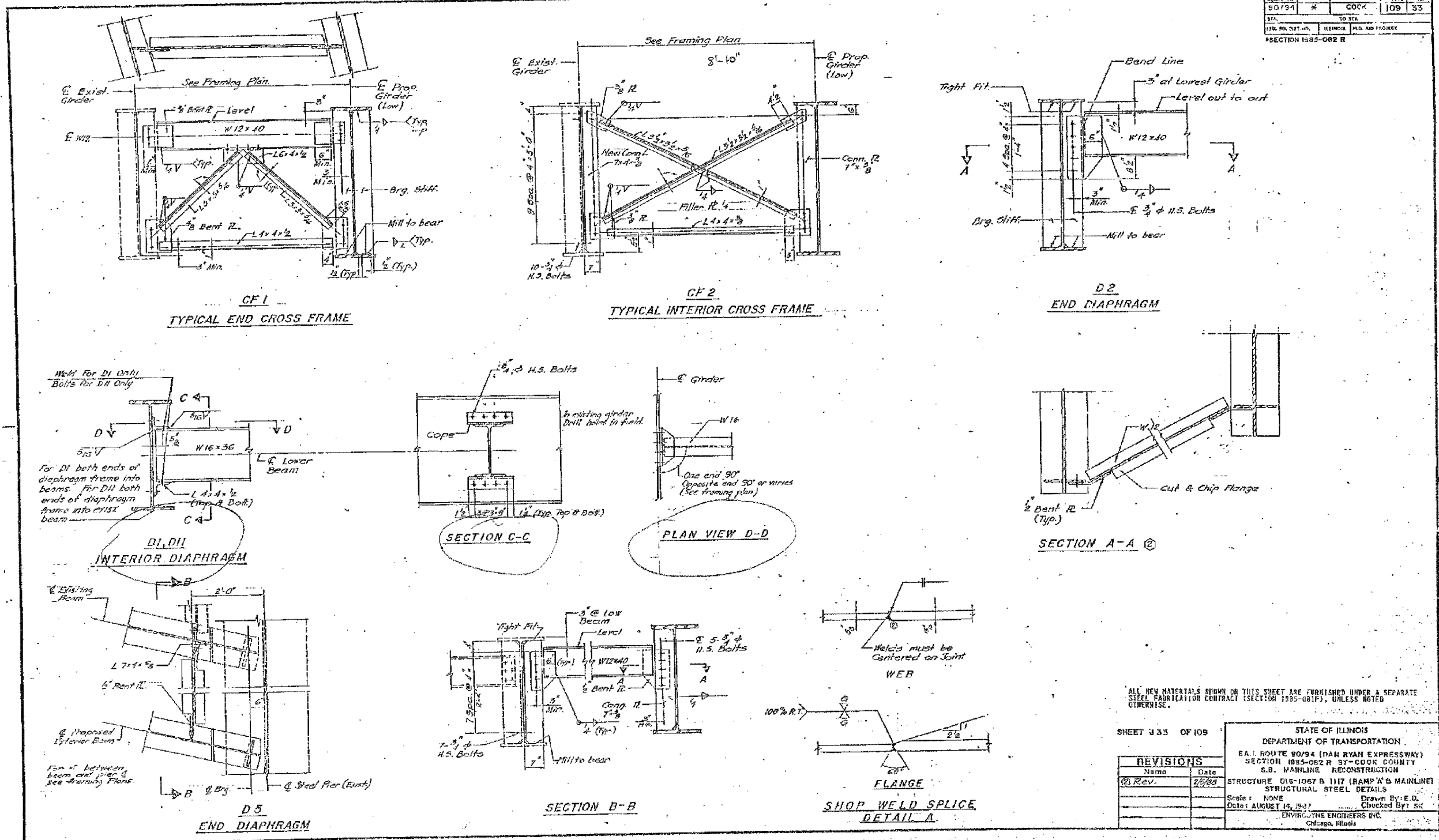


F.A.I.	SECTION	COUNTY	TOTAL SHEETS	SHEET NO.
94/90	2005-086 I	COOK	228	220
STA.	TO STA.			
FED. ROAD DIST. NO.	ILLINOIS	FED. AID PROJECT		

60B07

REVISION NO.	SECTION	COUNTY	DATE	BY
50/94	#	COOK	109	33
STA.	TO STA.			
FED. ROAD DIST. NO.	ILLINOIS	FED. AID PROJECT		



ALL NEW MATERIALS SHOWN ON THIS SHEET ARE FURNISHED UNDER A SEPARATE STEEL FABRICATION CONTRACT (SECTION 1905-081F), UNLESS NOTED OTHERWISE.

SHEET 333 OF 109

REVISIONS	
NO.	DATE
1	7/2/00

STATE OF ILLINOIS
DEPARTMENT OF TRANSPORTATION
E.A. ROUTE 90/94 (DAN RYAN EXPRESSWAY)
SECTION 1905-082 R BY-COOK COUNTY
S.D. MAINLINE RECONSTRUCTION
STRUCTURE 016-1067 B 1117 (RAMP 'N' & MAINLINE)
STRUCTURAL STEEL DETAILS
Scale: NONE
Date: AUGUST 15, 1997
Checked By: SK
ENVIRONMENTAL ENGINEERS INC.
Chicago, Illinois

FOR INFORMATION ONLY

BOWMAN, BARRETT & ASSOCIATES INC.
CONSULTING ENGINEERS
Chicago, Illinois
312.228.0100
www.bbainc.com

REVISIONS		ILLINOIS DEPARTMENT OF TRANSPORTATION	
NAME	DATE	F.A.I. 94/90 (DAN RYAN EXPRESSWAY)	
		DAN RYAN ELEVATED BRIDGE	
		BEARING REPLACEMENT & STEEL REPAIR	
		EXISTING PLAN INFORMATION	
		SN 016-1117 & SN 016-1067	
		SCALE: NTS	DRAWN BY: LAM
		DATE: 5/18/2007	CHECKED BY: BLU

5/24/2007 5:17:59 PM