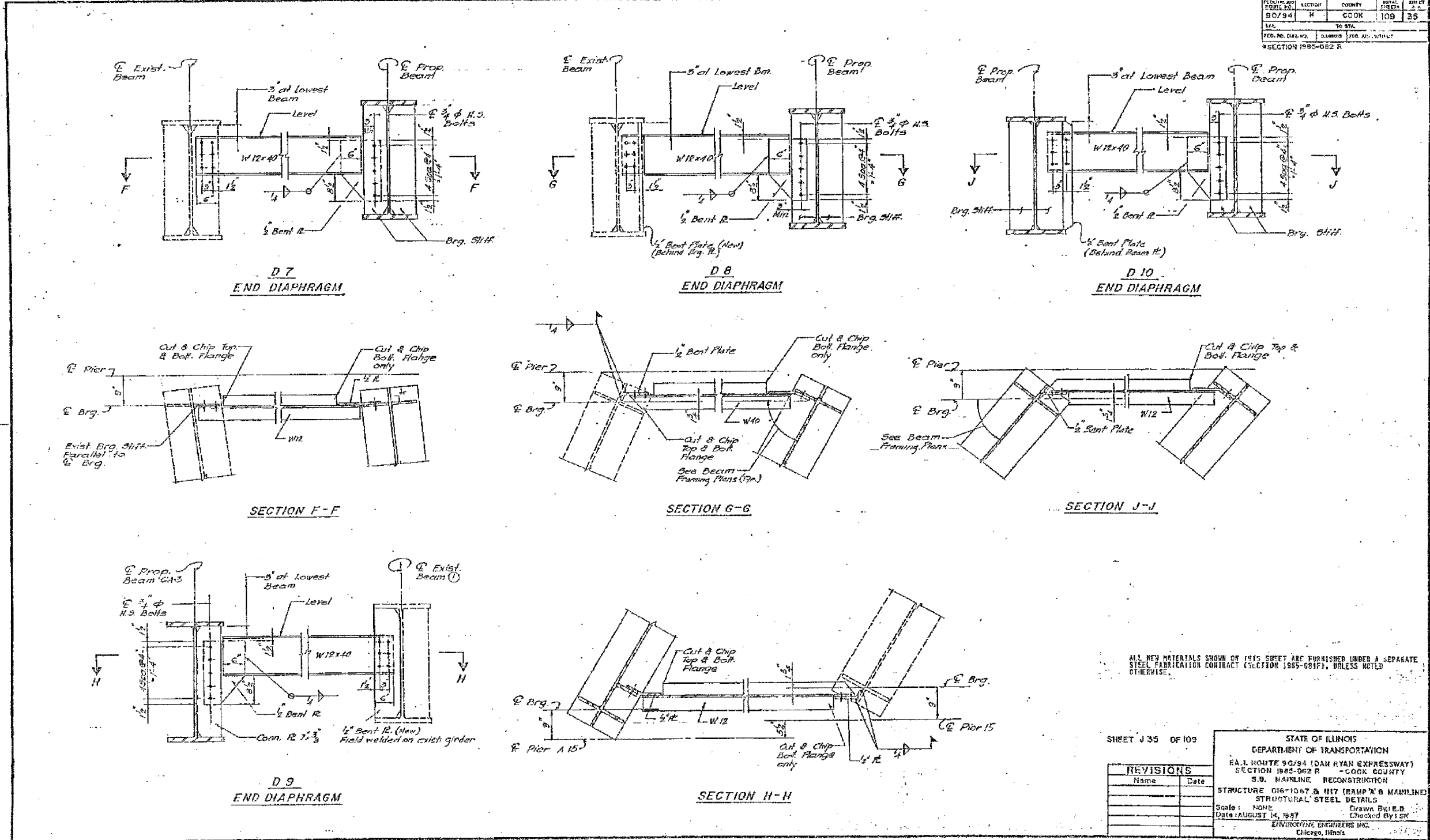


DESIGNED BY	SECTION	COUNTY	TOTAL SHEETS	SHEET NO.
80/94	H	COOK	109	35
STA.		TO STA.		
FED. ROAD DIST. NO.		ILLINOIS FED. AID PROJECT		
SECTION 1985-082 R				



ALL NEW MATERIALS SHOWN ON THIS SHEET ARE FURNISHED UNDER A SEPARATE STEEL FABRICATION CONTRACT (SECTION 1985-081F), UNLESS NOTED OTHERWISE.

SHEET J 35 OF 109

REVISIONS	
Name	Date

STATE OF ILLINOIS  
DEPARTMENT OF TRANSPORTATION  
F.A.I. ROUTE 90/94 (DAN RYAN EXPRESSWAY)  
SECTION 1985-082 R - COOK COUNTY  
S.B. MAINLINE RECONSTRUCTION  
STRUCTURE 016-1067 & 1117 (RAMP 'A' & MAINLINE)  
STRUCTURAL STEEL DETAILS  
Scale: NONE Drawn By: E.D.  
Date: AUGUST 14, 1987 Checked By: SK  
ENVIRONMENTAL ENGINEERS INC.  
Chicago, Illinois

FOR INFORMATION ONLY

BOWMAN, BARRETT & ASSOCIATES INC.  
CONSULTING ENGINEERS  
Chicago, Illinois  
312.228.0100  
www.bbandainc.com

ILLINOIS DEPARTMENT OF TRANSPORTATION  
F.A.I. 94/90 (DAN RYAN EXPRESSWAY)  
DAN RYAN ELEVATED BRIDGE  
BEARING REPLACEMENT & STEEL REPAIR  
EXISTING PLAN INFORMATION  
SN 016-1117 & SN 016-1067  
SCALE: NTS DRAWN BY: LAM  
DATE: 5/18/2007 CHECKED BY: BLU

5/24/2007 5:08:03 PM