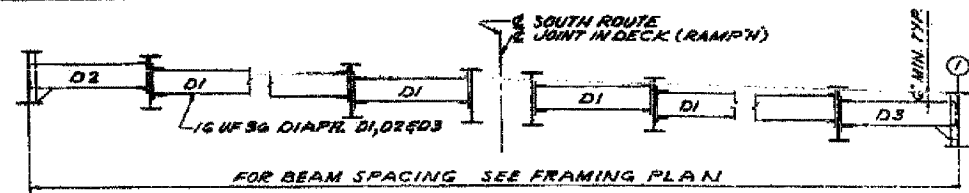
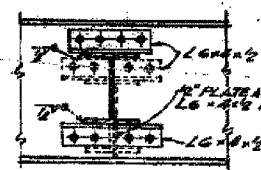


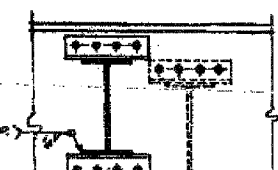
60B07



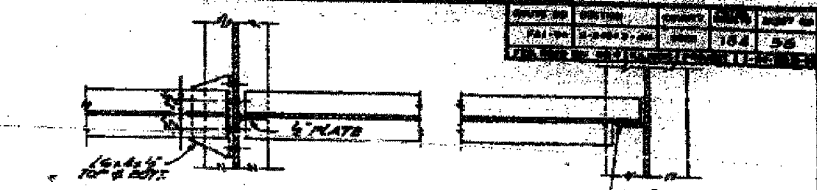
TYPICAL PARTIAL ELEVATION
SPANS #6 THRU #11, #14 THRU #19 & #1
SCALE: 3/4" = 1'-0"



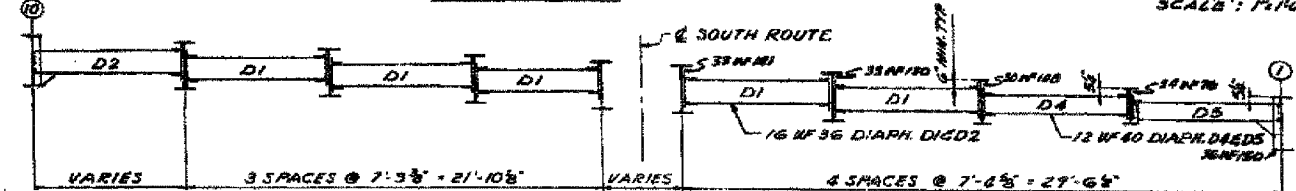
SECTION C-C
SECTION F-F SIMILAR
SCALE: 1/4" = 1'-0"



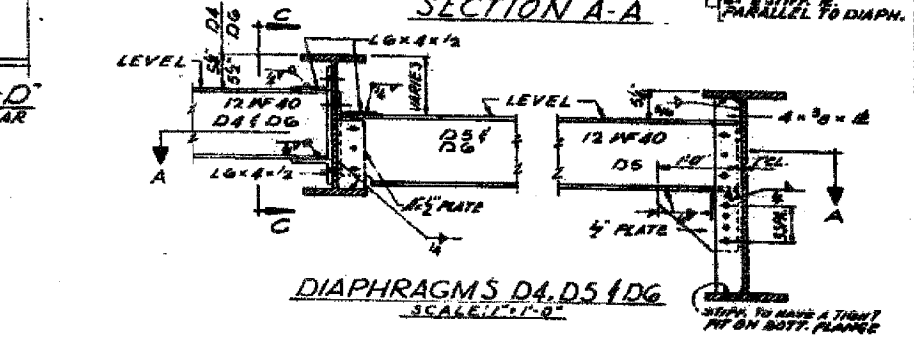
SECTION D-D
SECTION E-E SIMILAR
SCALE: 1/4" = 1'-0"



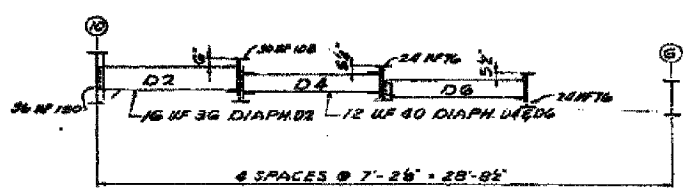
SECTION A-A
SCALE: 1/2" = 1'-0"



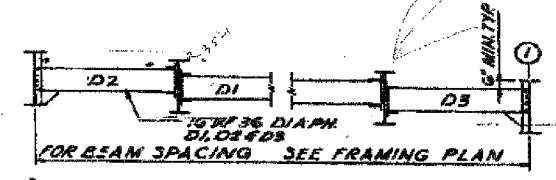
TYPICAL ELEVATION - SPAN #12
SCALE: 3/4" = 1'-0"



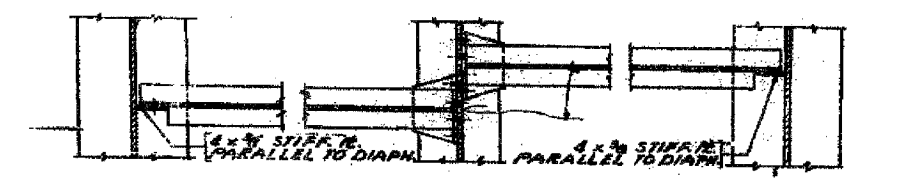
DIAPHRAGMS D4, D5 & D6
SCALE: 1/2" = 1'-0"



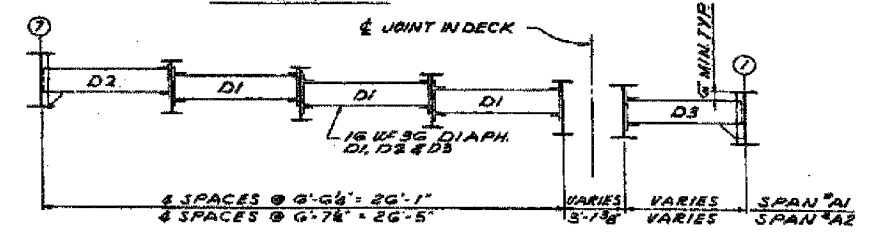
TYPICAL ELEVATION - SPAN #13
SCALE: 3/4" = 1'-0"



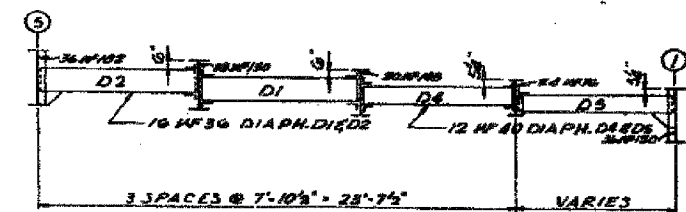
TYPICAL PARTIAL ELEVATION
SPANS #A3 THRU #A12, #A14 THRU #A17 & #H7 THRU #H13
SCALE: 3/4" = 1'-0"



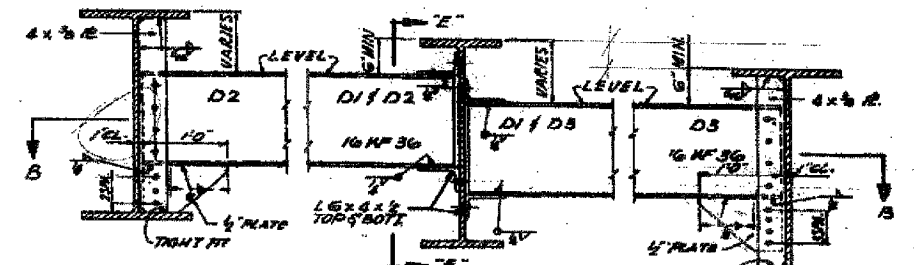
SECTION B-B



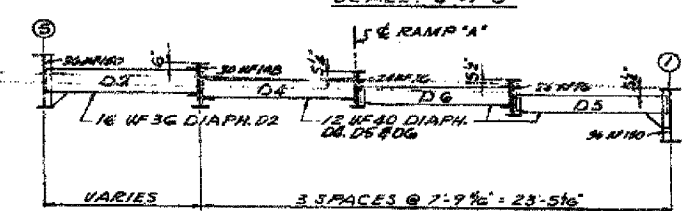
TYPICAL ELEVATION - SPANS #A1 & #A2
SCALE: 3/4" = 1'-0"



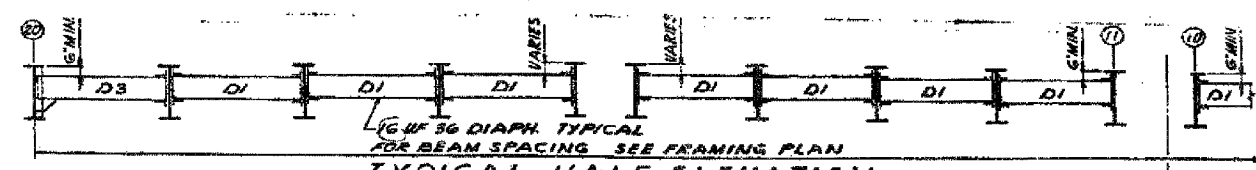
TYPICAL ELEVATION - SPAN #H6
SCALE: 3/4" = 1'-0"



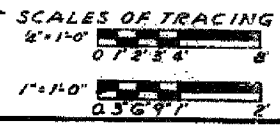
DIAPHRAGMS D1, D2 & D3
INTERMEDIATE DIAPHRAGM CONNECTIONS
SCALE: 1/2" = 1'-0"



TYPICAL ELEVATION - SPAN #A13
SCALE: 3/4" = 1'-0"



TYPICAL HALF ELEVATION
SPANS #24, #25 & #26
SCALE: 3/4" = 1'-0"



CITY OF CHICAGO
DEPARTMENT OF PUBLIC WORKS
BUREAU OF ENGINEERING
**SOUTH ROUTE SUPERHIGHWAY
ELEVATED HIGHWAY
28TH PLACE TO STEWART AVE.**
SECTION 2 - BEARINGS BY
INTERMEDIATE
DIAPHRAGM DETAILS
SHEET NO. 56 OF 104 SHEETS DATE: MARCH, 1991

ALFRED BUNDECH & ASSOCIATES CONSULTING ENGINEERS
30 SOUTH WABASH AVENUE CHICAGO, ILLINOIS

REVISIONS		ILLINOIS DEPARTMENT OF TRANSPORTATION F.A.I. 94/90 (DAN RYAN EXPRESSWAY) DAN RYAN ELEVATED BRIDGE BEARING REPLACEMENT & STEEL REPAIR EXISTING PLAN INFORMATION SN 016-1117, SN 016-1067, SN 016-1118 SCALE: NTS DRAWN BY: LAM DATE: 5/18/2007 CHECKED BY: BLU
NAME	DATE	

FOR INFORMATION ONLY

BOWMAN, BARRETT & ASSOCIATES INC.
CONSULTING ENGINEERS
Chicago, Illinois
312.228.0100
www.bbancinc.com

5/24/2007 5:00:07 PM