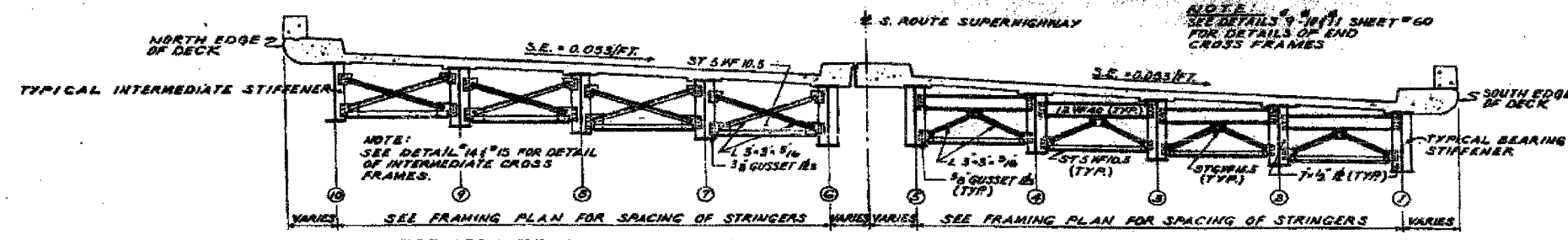
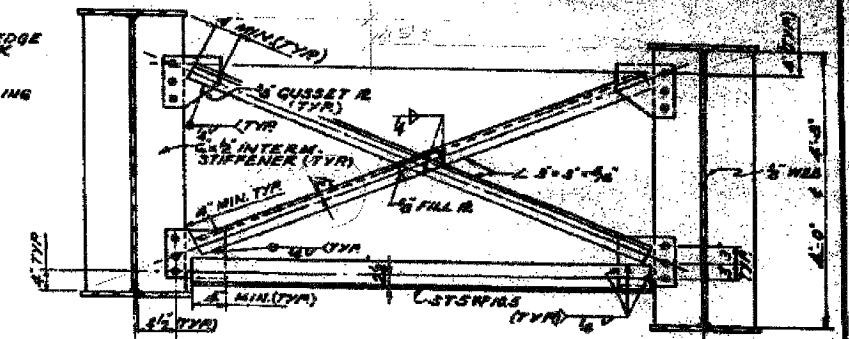


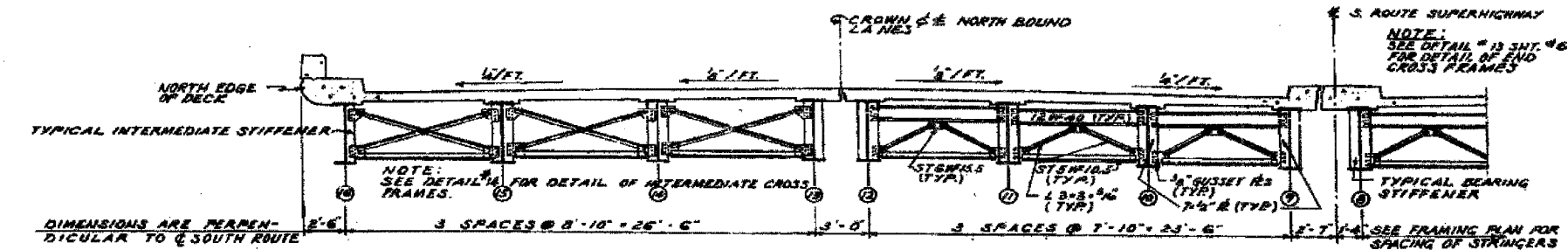
60B07



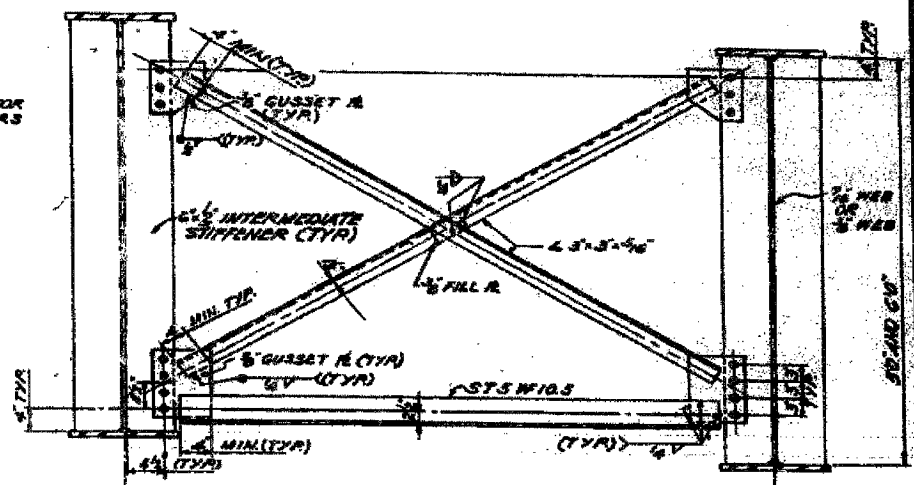
INTERMEDIATE CROSS FRAMES SPANS #1 THRU #5 END CROSS FRAMES



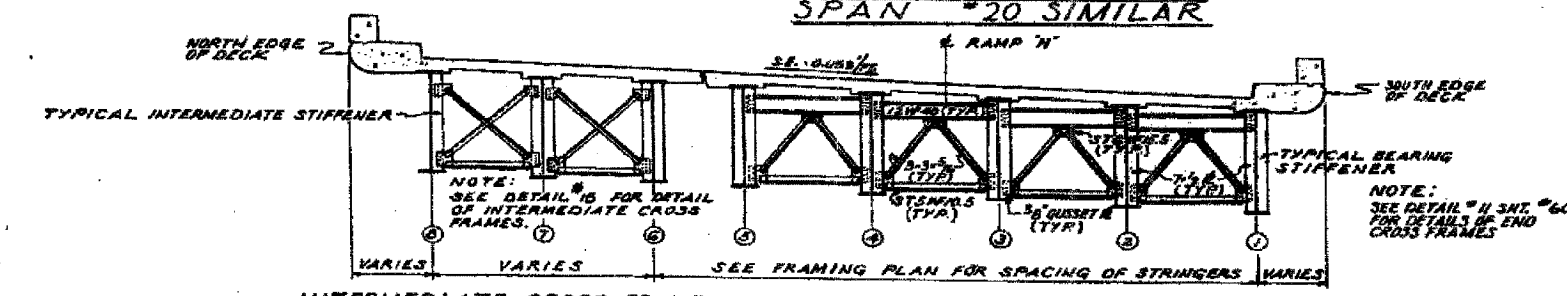
DETAIL #14 SPANS #1 #2 #3 AND #20 THRU #23



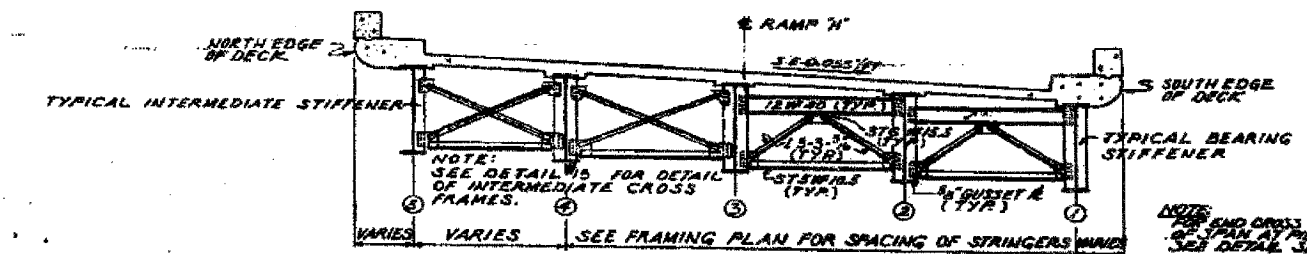
INTERMEDIATE CROSS FRAMES SPANS #21 THRU #23 END CROSS FRAMES SPAN #20 SIMILAR



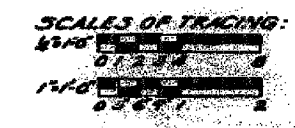
DETAIL #15 SPANS #4 AND #5 #H2 THRU #H5 TYPICAL INTERMEDIATE CROSS FRAMES SCALE: 1\"/>



INTERMEDIATE CROSS FRAMES SPANS #H2 AND #H3



INTERMEDIATE CROSS FRAMES SPAN #H4 SHOWN, SPAN #H5 SIMILAR TYPICAL CROSS SECTIONS SCALE: 1\"/>



CITY OF CHICAGO
DEPARTMENT OF PUBLIC WORKS
BUREAU OF ENGINEERING
**SOUTH ROUTE SUPERHIGHWAY
ELEVATED HIGHWAY
28TH PLACE TO STEWART AVE.**
SECTION 9-2424 E-401
**CROSS FRAME ELEVATIONS AND
INTERMEDIATE CROSS FRAME DETAILS**
SHEET NO. 24 OF 24 SHEETS DATE MARCH 1994

ALFRED BENECH & ASSOCIATES CONSULTING ENGINEERS
10 SOUTH CHICAGO AVENUE CHICAGO, ILLINOIS

| REVISIONS | |
|-----------|------|
| NAME | DATE |
| | |
| | |
| | |
| | |
| | |

ILLINOIS DEPARTMENT OF TRANSPORTATION
F.A.I. 94/90 (DAN RYAN EXPRESSWAY)
DAN RYAN ELEVATED BRIDGE
BEARING REPLACEMENT & STEEL REPAIR
EXISTING PLAN INFORMATION
SN 016-1117, SN 016-1067, SN 016-1118
SCALE: NTS DRAWN BY: LAM
DATE: 5/18/2007 CHECKED BY: BLU

FOR INFORMATION ONLY

BOWMAN, BARRETT & ASSOCIATES INC.
CONSULTING ENGINEERS
Chicago, Illinois
312.228.0100
www.bbainc.com

5/24/2007