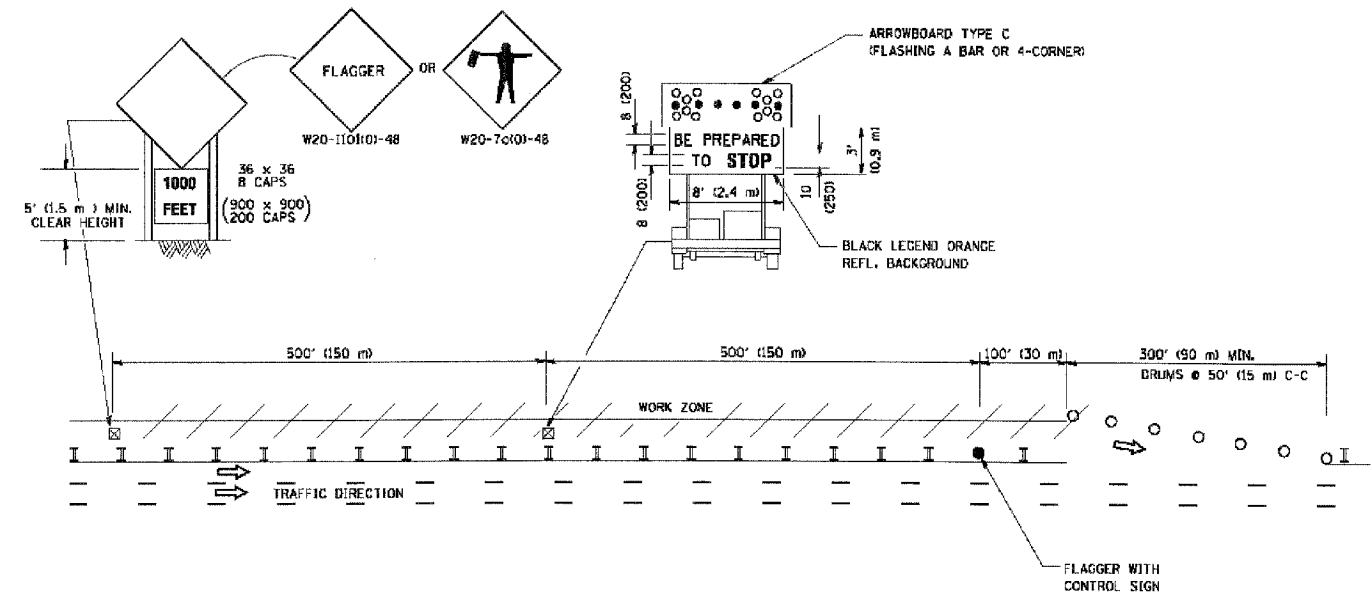


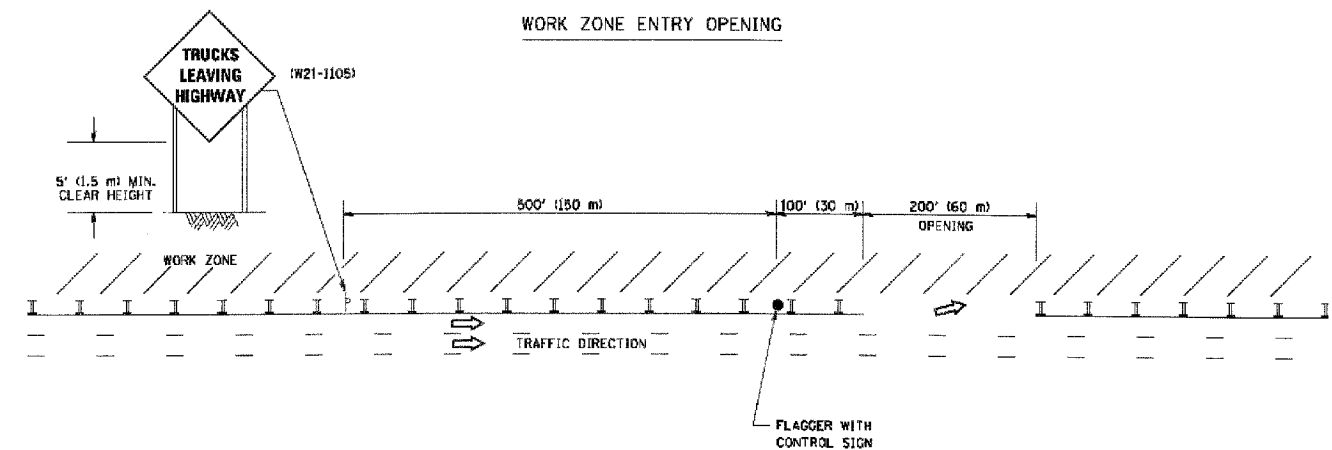
CONTRACT NO.		TOTAL SHEETS		SHEET NO.	
F.A. RTE.	SECTION	COUNTY	228	228	
94/90	2005-086 I	COOK			
STA.	TO STA.				
FED. ROAD DIST. NO.	ILLINOIS	FED. AID PROJECT			
	60B07				

SIGNING FOR FLAGGING OPERATIONS AT WORK ZONE OPENINGS

WORK ZONE EXIT OPENING



WORK ZONE ENTRY OPENING



NOTES:

1. The Arrowboard, the Flagger Ahead trailer mounted sign, and the Trucks Leaving Highway sign shall be removed or turned away from traffic and the exit and entry openings shall be closed when the flagging operation ceases.
2. Work Zone Exit Openings should be a minimum of one half mile apart.
3. Exiting the work zone at any place other than at a Work Zone Exit Opening will be prohibited.
4. All vehicles shall enter the work zone at entry openings, using their turn signals to warn motorists.

ALL DIMENSIONS ARE IN INCHES (MILLIMETERS) UNLESS OTHERWISE SHOWN

REVISIONS	
NAME	DATE
DWS	8/98
JAF	4/03
JAF	2/06
SPB	1/07

ILLINOIS DEPARTMENT OF TRANSPORTATION  
SIGNING FOR FLAGGING OPERATIONS  
AT WORK ZONE OPENINGS

SCALE: NONE

DRAWN BY CADD  
CHECKED BY  
TC-18

PLOT DATE : 3/7/2007  
PLOT SCALE : 1/8"=1'-0"  
USER NAME : bbarrett

BOWMAN, BARRETT & ASSOCIATES INC.  
CONSULTING ENGINEERS  
Chicago, Illinois  
312.228.0100  
www.bbandainc.com



I:\660\cadd\BRIDGE\21A\SHEET\5\660\_21A\_1202207.dwg 5:33:11 PM 3/24/2007