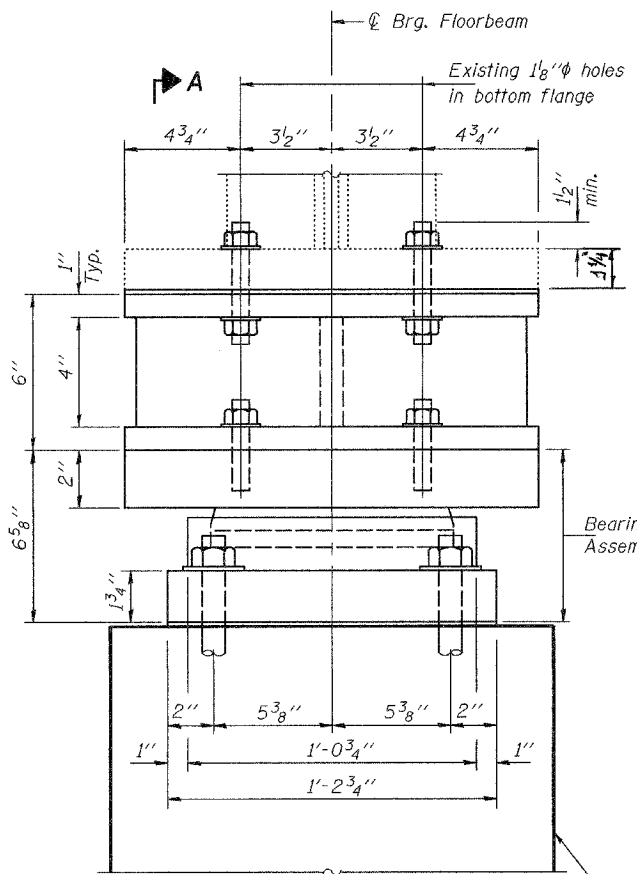


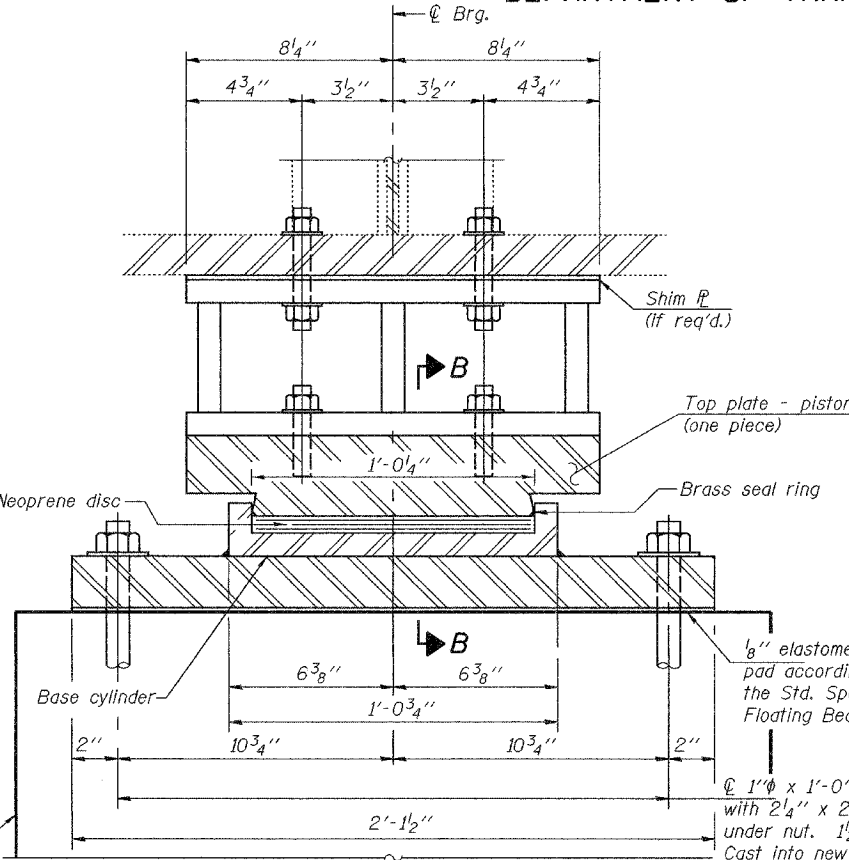
STATE OF ILLINOIS  
DEPARTMENT OF TRANSPORTATION

ROUTE NO.	SECTION	COUNTY	SHEET NO.	SHEET NO.
FAP 350	#	COOK	11	9
ILLINOIS		FED. AID PROJECT		
* 3068 B-1 Contract #60B29				

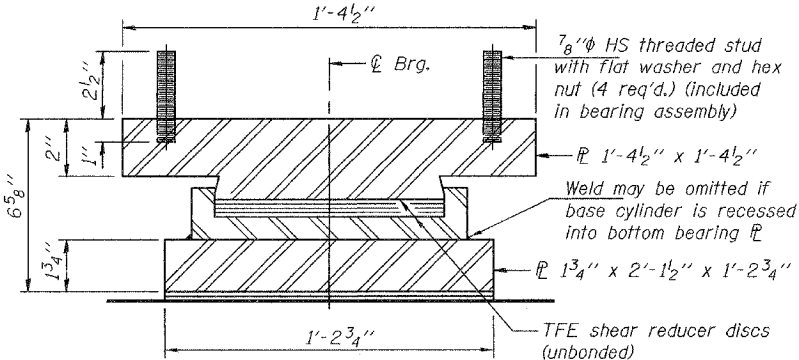
Notes:  
The plates of the Bearing Assembly shall be AASHTO M270, Grade 50.  
Anchor bolts shall be AASHTO M314 Grade 55.  
Prior to ordering any material, the contractor shall verify in the field all bearing height and shim thickness dimensions.  
Cost of steel extensions included with Furnishing and Erecting Structural Steel.



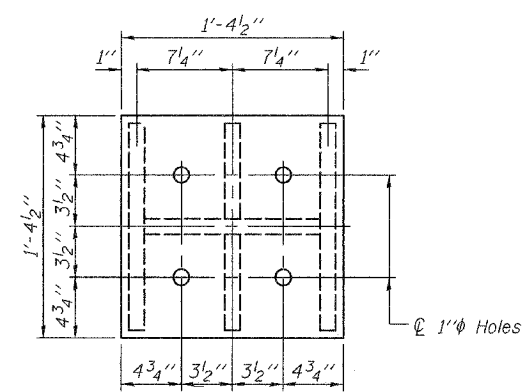
**ELEVATION**  
**FIXED FLOATING BEARING AT PIERS 1 & 2**



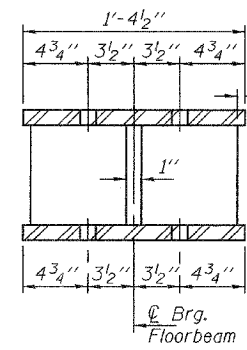
**SECTION A-A**



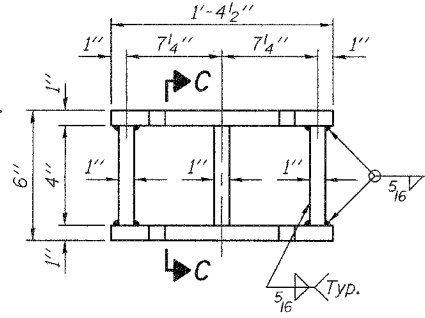
**SECTION B-B**



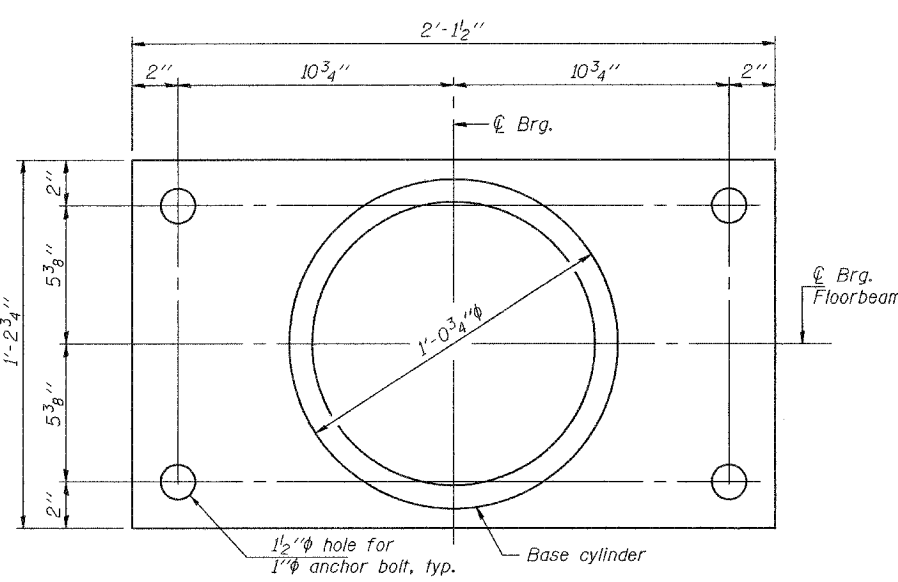
**PLAN TOP AND BOTTOM PLATE**



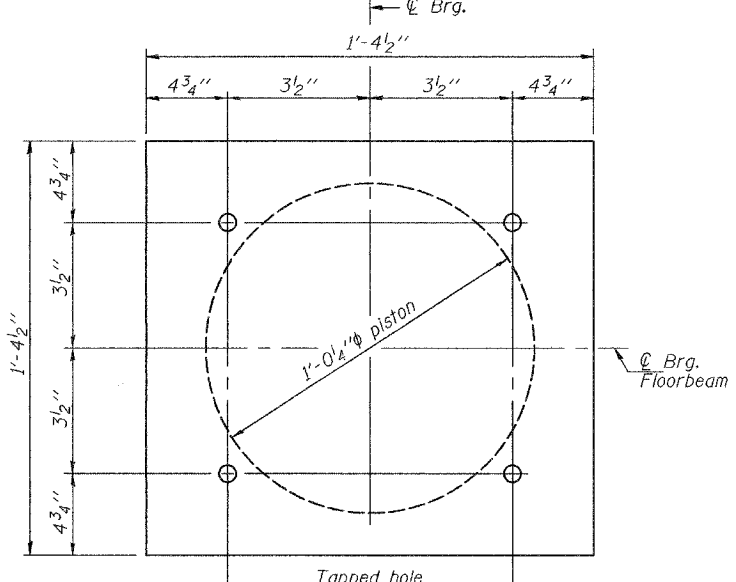
**SECTION C-C**



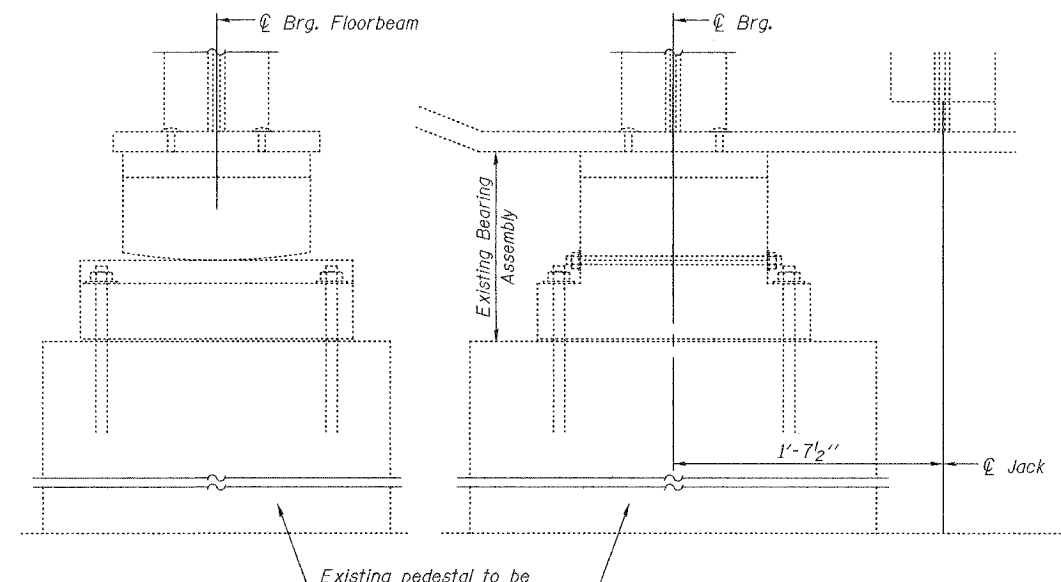
**STEEL EXTENSION DETAIL**



**BOTTOM BEARING AND BASE CYLINDER PLAN**



**TOP BEARING AND PISTON PLAN**



**EXISTING BEARING REMOVAL DETAIL**

**BILL OF MATERIAL**

Item	Unit	Total
High Load Multi-Rotation Bearings, Fixed - 300 kip	Each	4
Anchor Bolts, 1"	Each	16
Jack and Remove Existing Bearings	Each	4
Furnishing and Erecting Structural Steel	Pound	930

**BEARING DATA**

Vertical design load	270 kip
Lateral design load	54 kip

**APPROACH BEARING DETAILS**  
FAP 350 (IL 50/83)  
CICERO AVE OVER CAL SAG CHANNEL  
COOK COUNTY  
STRUCTURE NO. 016-0421

DESIGNED	Victor H. Voliz
CHECKED	SJB
DRAWN	ballva
CHECKED	VHV SJB

EXAMINED *[Signature]*  
ENGINEER OF STRUCTURAL SERVICES

PASSED *[Signature]*  
ENGINEER OF BRIDGES AND STRUCTURES



EXPIRES 11-30-2008