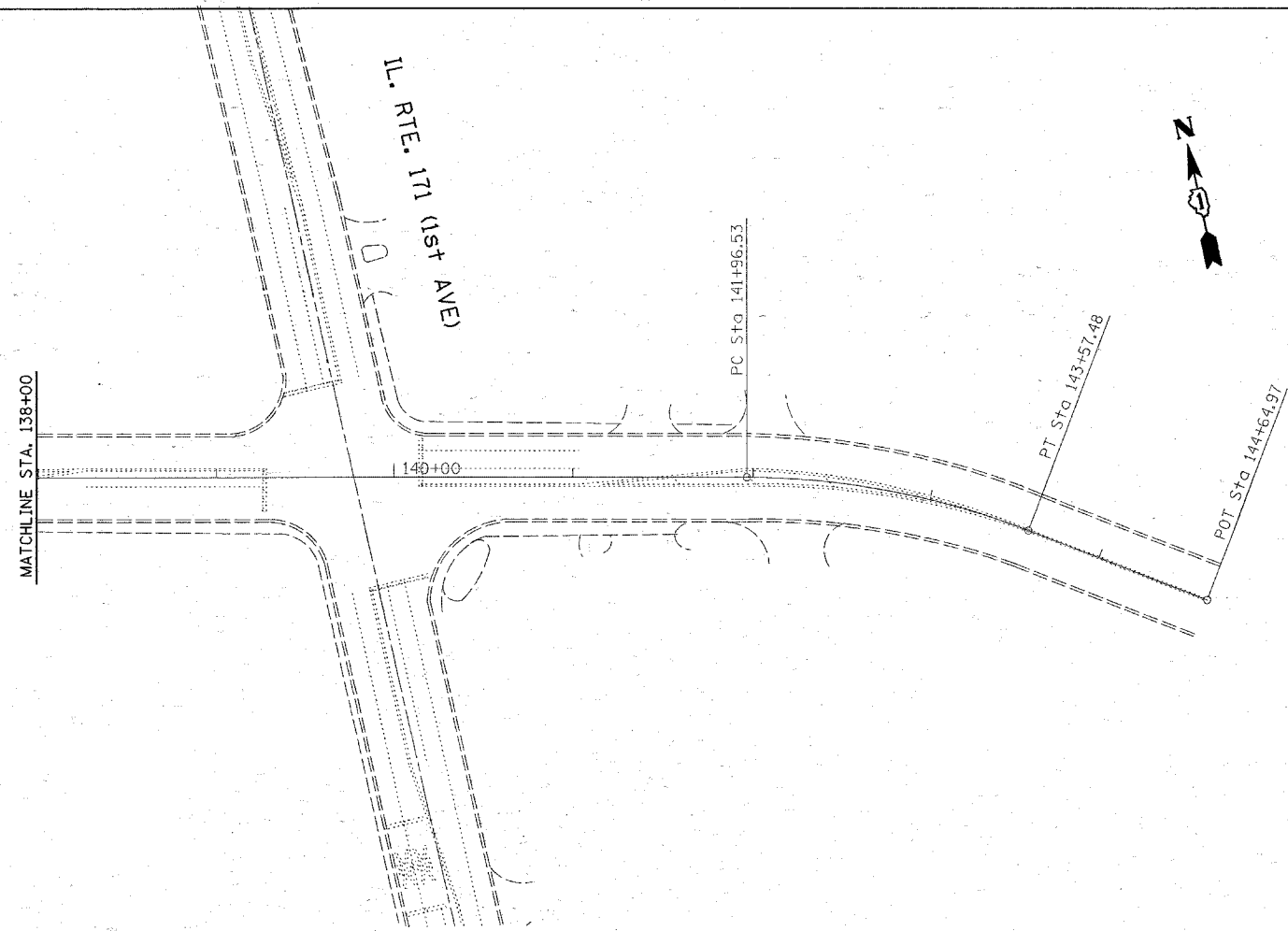


PROP. HOT MIX ASPHALT SURFACE REMOVAL (2 1/4") - (TYP.)
 PROP. POLYMERIZED LEVELING BINDER (MM) IL. - 4.75, N50 (3/4") - (TYP.)
 PROP. HOT MIX ASPHALT SURFACE COURSE, MIX "D", N70, (1 1/2") - (TYP.)



NOTES:
 LIMIT OF RESURFACING ON SIDE-STREETS THROUGH OUT THE IMPROVEMENT SHALL BE TO THE RADIUS OF RETURN OR AS DIRECTED BY THE ENGINEER.
 ALL FINAL PAVEMENT MARKINGS SHALL BE THERMOPLASTIC (OF THE EXTRUDED TYPE) AND SHOULD BE PLACED IN ACCORDANCE WITH "DISTRICT ONE TYPICAL PAVEMENT MARKINGS" DETAIL. (TC-13).
 ALL RAISED REFLECTIVE PAVEMENT MARKINGS SHALL BE PLACED IN ACCORDANCE WITH THE DISTRICT ONE "TYPICAL APPLICATIONS RAISED REFLECTIVE PAVEMENT MARKER DETAIL." (TC-11).

FILE NAME = ca:\projects\dl23804\design_00.dgn	USER NAME = bankal	DESIGNED -	REVISED -	STATE OF ILLINOIS DEPARTMENT OF TRANSPORTATION	LAKE STREET- US 1245 (MANNHEIM RD.) TO IL 171 (1ST AVE.) ROADWAY AND PAVEMENT MARKINGS	F.A.P. RTE. 3537	SECTION (3W & 3264) RS-6	COUNTY COOK	TOTAL SHEETS 29	SHEET NO. 13
	PLOT SCALE = 49.9999' / IN.	CHECKED -	REVISED -			CONTRACT NO. 60B72		FED. ROAD DIST. NO. 1 ILLINOIS FED. AID PROJECT		
PLOT DATE = 4/8/2008	DATE -	REVISED -	REVISED -	SCALE:	SHEET NO. OF SHEETS STA. TO STA.					