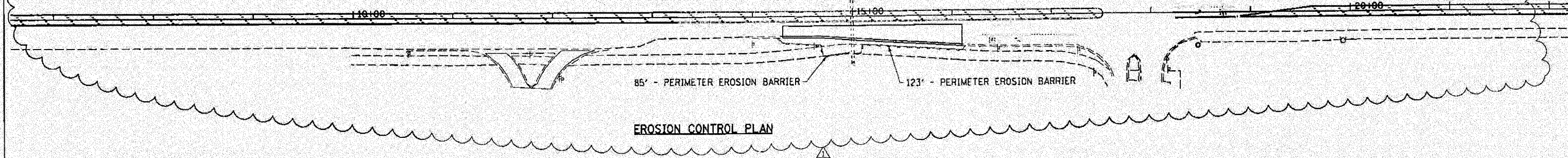
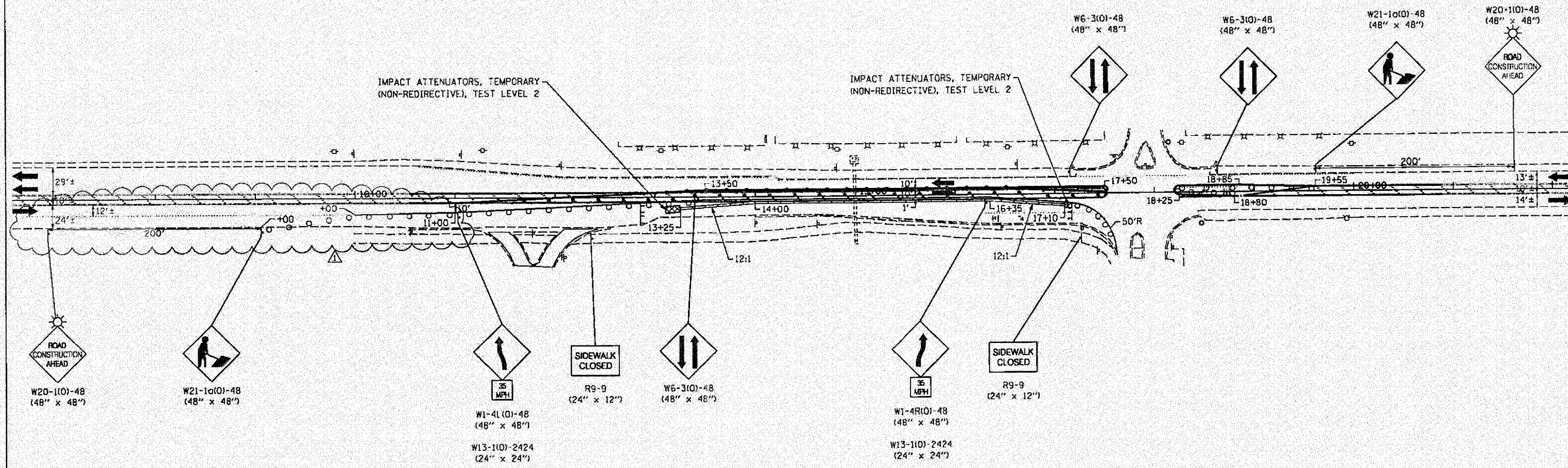


EROSION CONTROL NOTE:

ALL PUMP DISCHARGES SHALL BE FILTERED THROUGH A PORTABLE SEDIMENT TANK BEFORE OUTLETTING.



EROSION CONTROL PLAN



MAINTENANCE OF TRAFFIC

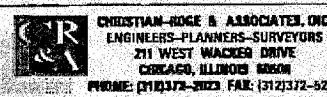
LEGEND

- WORK ZONE
- DIRECTION OF TRAFFIC
- PAVEMENT MARKING REMOVAL
- TEMPORARY CONCRETE BARRIER

- TYPE III BARRICADES WITH FLASHING LIGHTS
- SIGN
- FLEXIBLE DELINEATORS @ 20' C-C
- BARRICADES OR DRUMS WITH BI-DIRECTIONAL STEADY BURNING LIGHTS @ 20' C-C

MAINTENANCE OF TRAFFIC NOTES:
 THE MAINTENANCE OF TRAFFIC FOR THE PAVEMENT REPLACEMENT WILL BE PAID FOR AS "TRAFFIC CONTROL AND PROTECTION STANDARD 701501."

FILE NAME = 1824C-whr-staging.dgn	DESIGNED - S.J.P.	REVISED - ADD. 1 05-28-2008
PLOT DATE = 5/29/2008	DRAWN - A.C.S.	REVISED -
(6/2/08) KE	CHECKED - E.J.M.	REVISED -
	DATE - APRIL 9, 2008	REVISED -



**STATE OF ILLINOIS
 DEPARTMENT OF TRANSPORTATION**

**PAVEMENT REPLACEMENT - MAINTENANCE OF TRAFFIC
 AND EROSION CONTROL PLAN IL RTE. 120**

SCALE: 1" = 50' SHEET NO. 1 OF 1 SHEETS STA. 7+00 TO STA. 22+00

F.A.P. RTE. 342	SECTION G-RS-4	COUNTY LAKE	TOTAL SHEETS 24	SHEET NO. 12
FED. ROAD DIST. NO. 1 ILLINOIS FED. AID PROJECT			CONTRACT NO. 60C32	