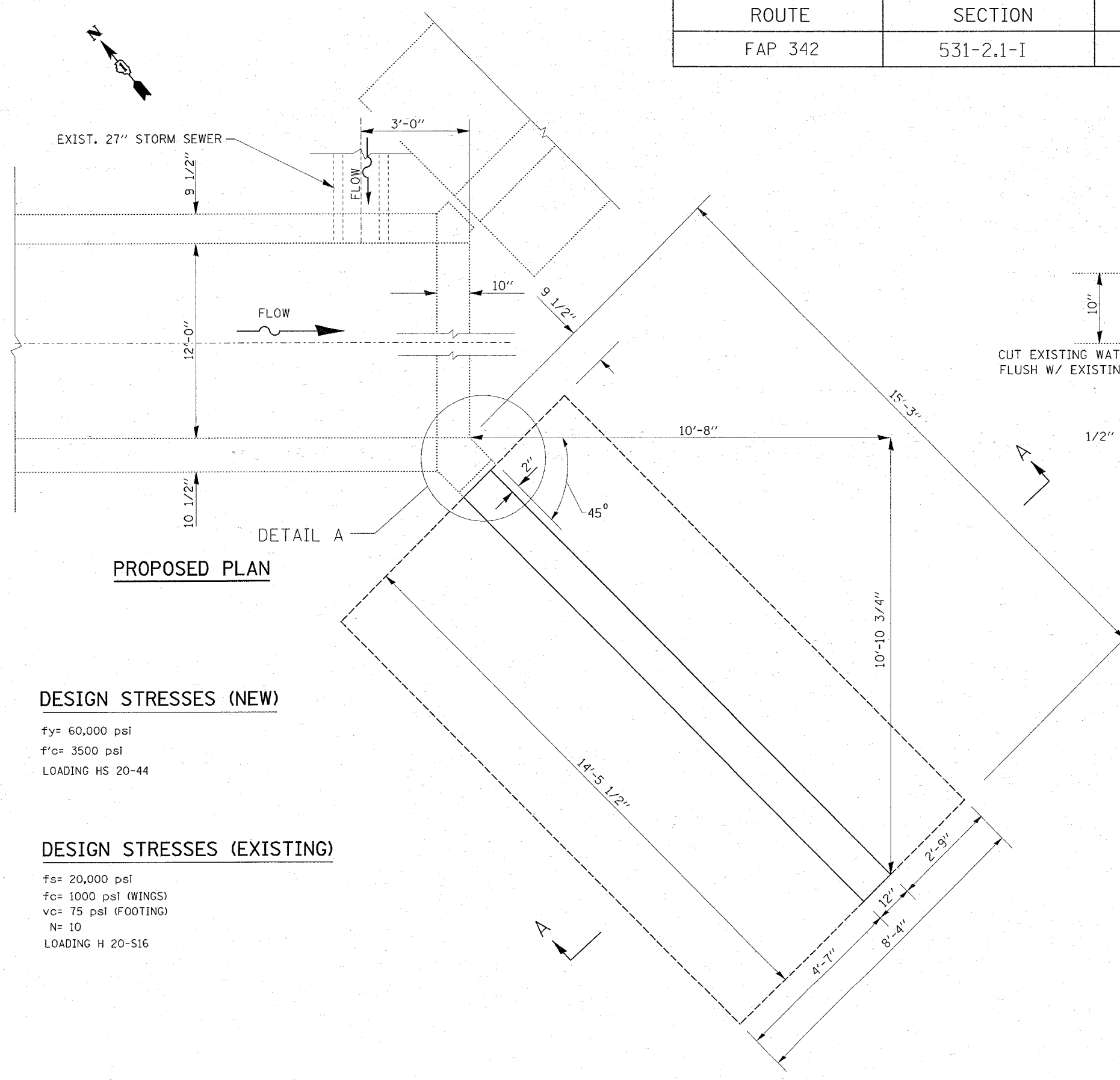


ROUTE	SECTION	COUNTY	TOTAL SHEETS	SHEET NUMBER
FAP 342	531-2.1-I	COOK	10	6

CONTRACT: 60C42



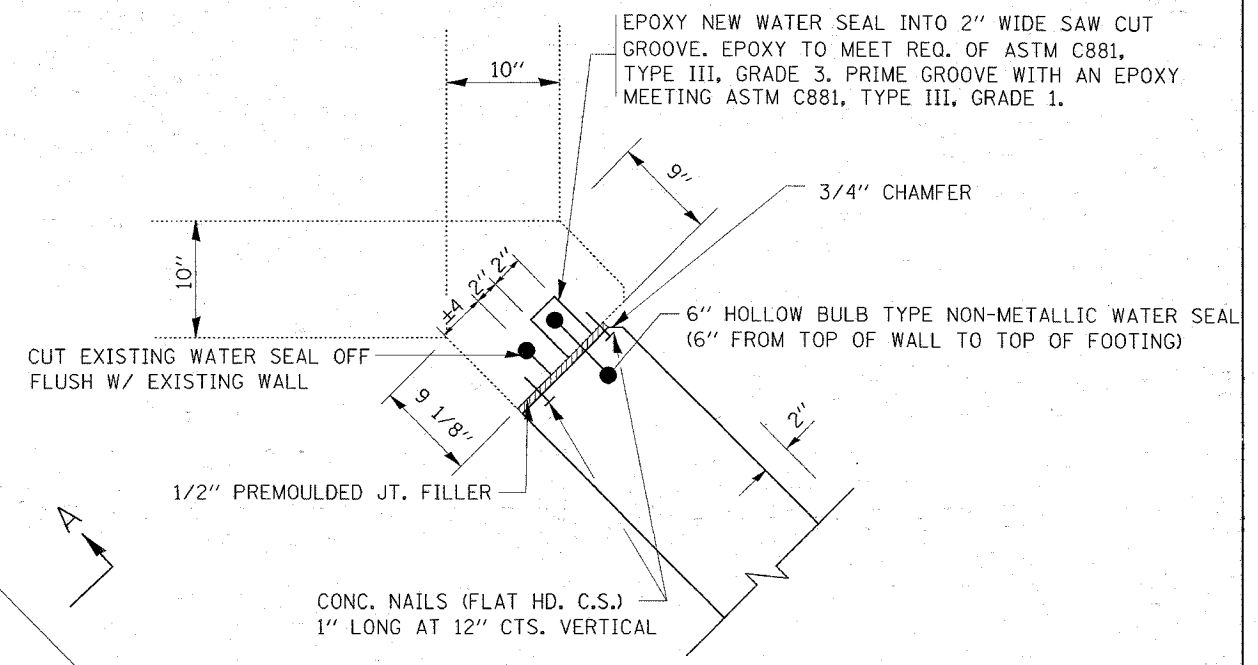
PROPOSED PLAN

DESIGN STRESSES (NEW)

fy= 60,000 psi
 f'c= 3500 psi
 LOADING HS 20-44

DESIGN STRESSES (EXISTING)

fs= 20,000 psi
 fc= 1000 psi (WINGS)
 vc= 75 psi (FOOTING)
 N= 10
 LOADING H 20-S16



DETAIL A

ILLINOIS DEPARTMENT OF
 TRANSPORTATION
 IL 53
 OVER SALT CREEK BRANCH
 WINGWALL REPAIR PLAN