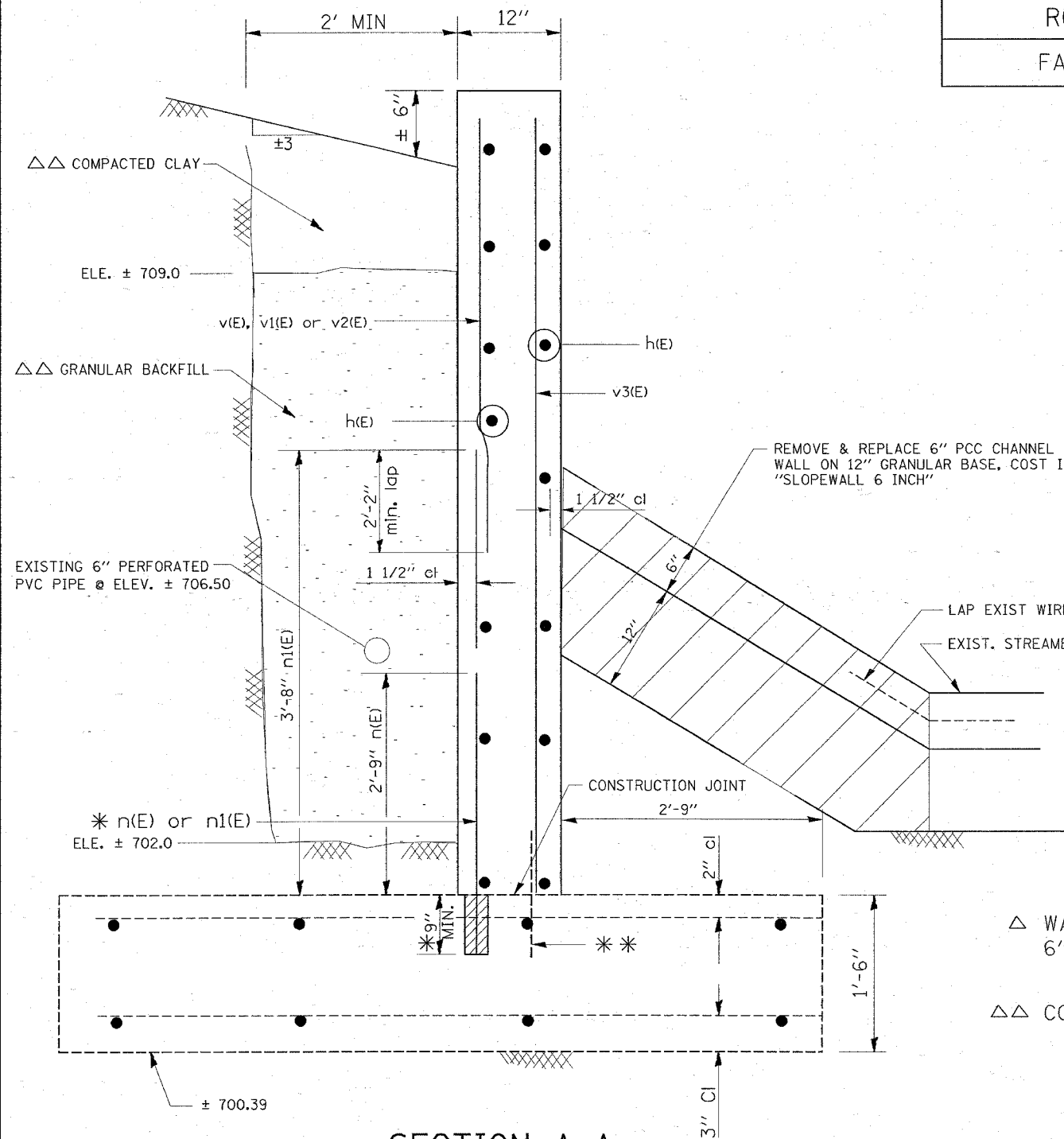


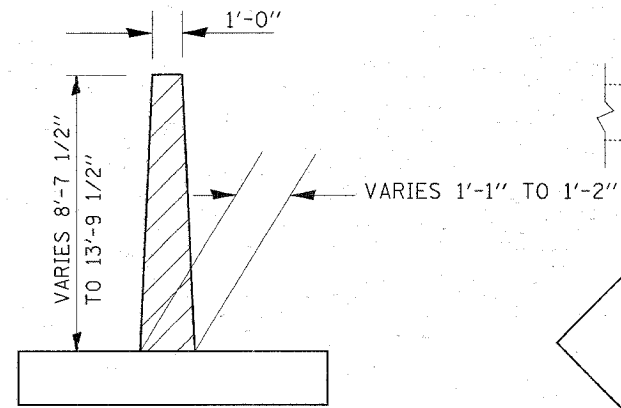
ROUTE	SECTION	COUNTY	TOTAL SHEETS	SHEET NUMBER
FAP 342	531-2.1-I	COOK	10	8

CONTRACT: 60C42

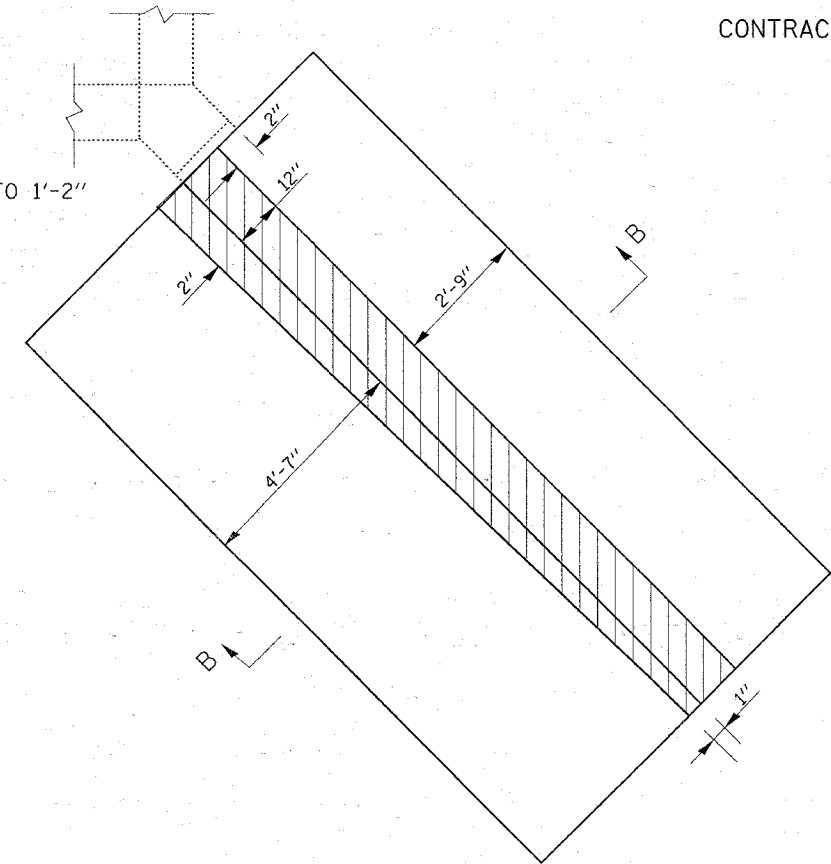


**SECTION A-A
PROPOSED**

- * DRILL & EPOXY GRAUT 9" MIN. INTO EXISTING CONCRETE ACCORDING TO ARTICLE 584 OF THE STANDARD SPECIFICATIONS.
- ** EXISTING REINFORCEMENT BARS EXTENDING INTO REMOVAL AREA SHALL BE CLEAN, STRAIGHTEN AND INCORPORATED INTO THE NEW CONSTRUCTION. ANY REINFORCEMENT BARS THAT ARE DAMAGED DURING CONCRETE REMOVAL SHALL BE REPLACED WITH AN APPROVED BAR SPLICER OR ANCHORAGE SYSTEM. COST INCLUDED WITH CONCRETE REMOVAL.



EXIST. SECTION B-B



EXIST. FOOTING PLAN

(SHOWING CONCRETE REMOVAL OF EXISTING STEM)

△ WALL SHALL BE REINFORCED WITH WELDED WIRE FABRIC, 6" X 6" - W4.0 X W 4.0, WEIGHING 58 LBS PER 100 SQ FT.

△△ COST INCLUDED IN COST OF "POROUS GRANULAR BACKFILL"

BAR LIST				
BAR	NO.	SIZE	LENGTH	SHAPE
h (E)	19	# 4	14'-2"	—
n (E)	18	# 6	3'-6"	—
n1 (E)	17	# 7	4'-5"	—
v (E)	6	# 5	10'-9"	—
v1 (E)	6	# 5	9'-0"	—
v2 (E)	6	# 5	7'-4"	—
v3 (E)	5	# 4	13'-6"	—

ILLINOIS DEPARTMENT OF
TRANSPORTATION
IL 53
OVER SALT CREEK BRANCH
WINGWALL REPAIR DETAIL