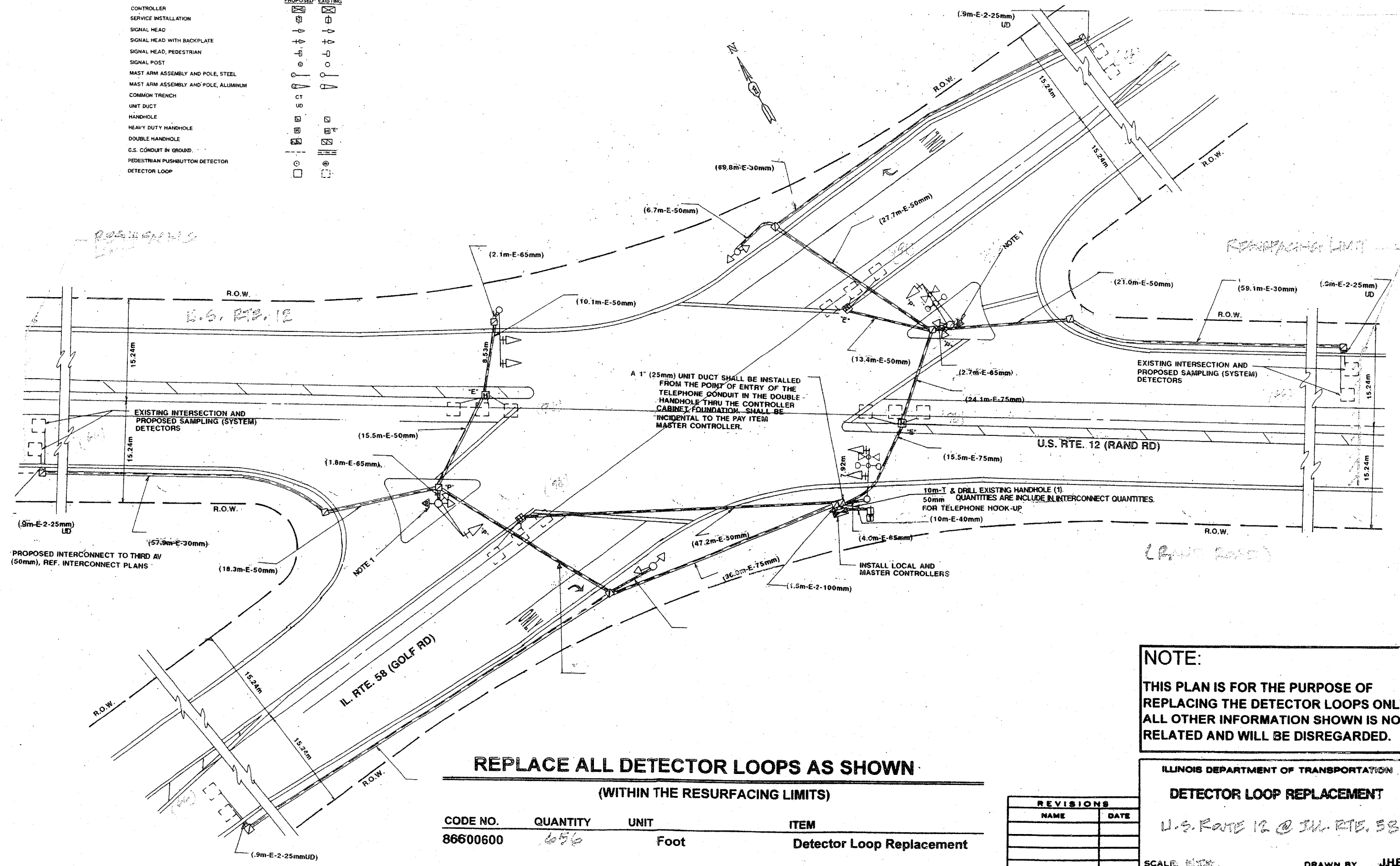


TRAFFIC SIGNAL LEGEND

	PROPOSED	EXISTING
CONTROLLER		
SERVICE INSTALLATION		
SIGNAL HEAD		
SIGNAL HEAD WITH BACKPLATE		
SIGNAL HEAD, PEDESTRIAN		
SIGNAL POST		
MAST ARM ASSEMBLY AND POLE, STEEL		
MAST ARM ASSEMBLY AND POLE, ALUMINUM		
COMMON TRENCH		
UNIT DUCT		
HANDHOLE		
HEAVY DUTY HANDHOLE		
DOUBLE HANDHOLE		
G.S. CONDUIT IN GROUND		
PEDESTRIAN PUSHBUTTON DETECTOR		
DETECTOR LOOP		



A 1" (25mm) UNIT DUCT SHALL BE INSTALLED FROM THE POINT OF ENTRY OF THE TELEPHONE CONDUIT IN THE DOUBLE HANDHOLE THRU THE CONTROLLER CABINET FOUNDATION. SHALL BE INCIDENTAL TO THE PAY ITEM MASTER CONTROLLER.

10m-1 & DRILL EXISTING HANDHOLE (1) 50mm QUANTITIES ARE INCLUDE IN INTERCONNECT QUANTITIES FOR TELEPHONE HOOK-UP (10m-E-40mm)

INSTALL LOCAL AND MASTER CONTROLLERS

REPLACE ALL DETECTOR LOOPS AS SHOWN

(WITHIN THE RESURFACING LIMITS)

CODE NO.	QUANTITY	UNIT	ITEM
86500600	656	Foot	Detector Loop Replacement

REVISIONS	
NAME	DATE

NOTE:
THIS PLAN IS FOR THE PURPOSE OF REPLACING THE DETECTOR LOOPS ONLY. ALL OTHER INFORMATION SHOWN IS NOT RELATED AND WILL BE DISREGARDED.

ILLINOIS DEPARTMENT OF TRANSPORTATION
DETECTOR LOOP REPLACEMENT
U.S. RTE 12 @ IL. RTE. 58
SCALE: N.T.S.
DATE: APRIL 2008
DRAWN BY: JHE.
DESIGNED BY: JHE.
CHECKED BY: DAD.