

FOR INDEX OF SHEETS, SEE SHEET NO. 2

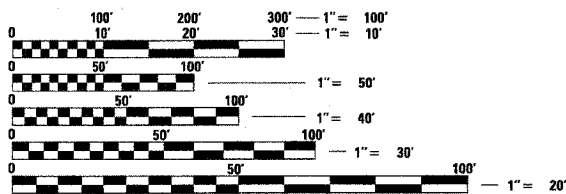
FUNCTIONAL CLASSIFICATION: INTERSTATE F.A.I.
ADT: 59,850 (2005), 74,480 (2021)
DESIGN SPEED LIMIT: 50 MPH
POSTED SPEED LIMIT: 50 MPH

SCOPE OF WORK

WITHIN THE PROJECT LIMITS SIX (6) BRIDGE STRUCTURES WILL HAVE INTERIM REPAIRS TO THE BRIDGE DECKS.

IMPROVEMENTS LOCATED IN THE CITY OF CHICAGO, COOK COUNTY

LOCATION OF WORK:
F.A.I. 55 AT U.S. 41
SN 016-0036, SN 016-1045
SN 016-1048, SN 016-1052
SN 016-1055, SN 016-1075



FULL SIZE PLANS HAVE BEEN PREPARED USING STANDARD ENGINEERING SCALES. REDUCED SIZED PLANS WILL NOT CONFORM TO STANDARD SCALES. IN MAKING MEASUREMENTS ON REDUCED PLANS, THE ABOVE SCALES MAY BE USED.

C.U.A.N.
CHICAGO UTILITY ALERT NETWORK
1-312-744-7000

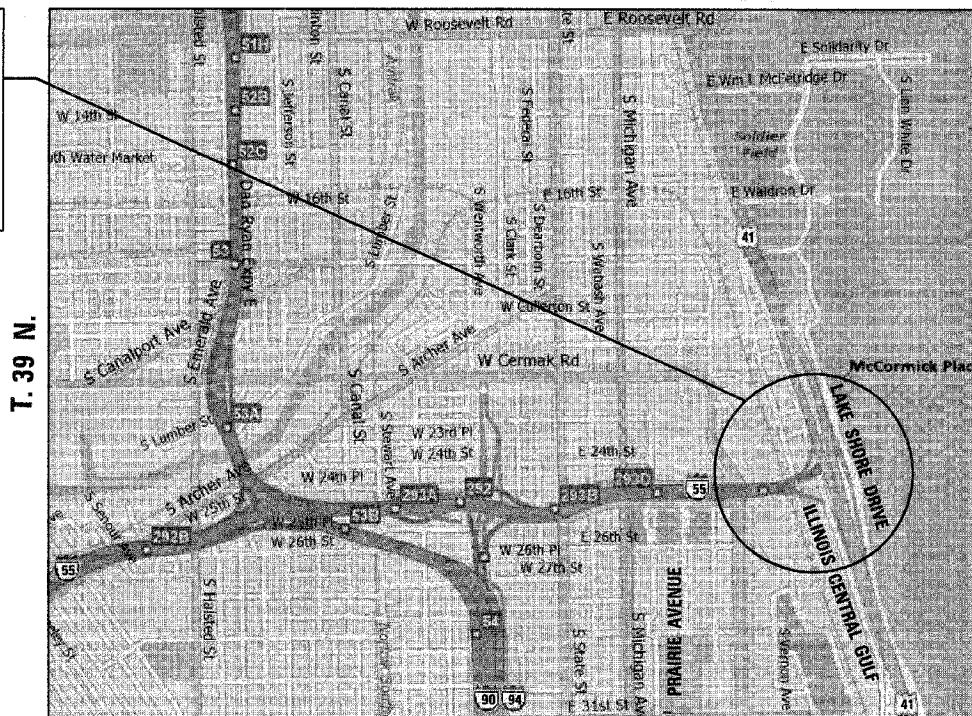
CONTRACT NO. 60C92

STATE OF ILLINOIS
DEPARTMENT OF TRANSPORTATION
DIVISION OF HIGHWAYS

PROPOSED
HIGHWAY PLANS

F.A.I. RTE. 55 / I-55
SECTION: 1818 (.31 H & .32 H) I-4
PRAIRIE AVE. TO ICG RR (AT LSD)
BRIDGE DECK REPAIRS
COOK COUNTY
C-91-277-07

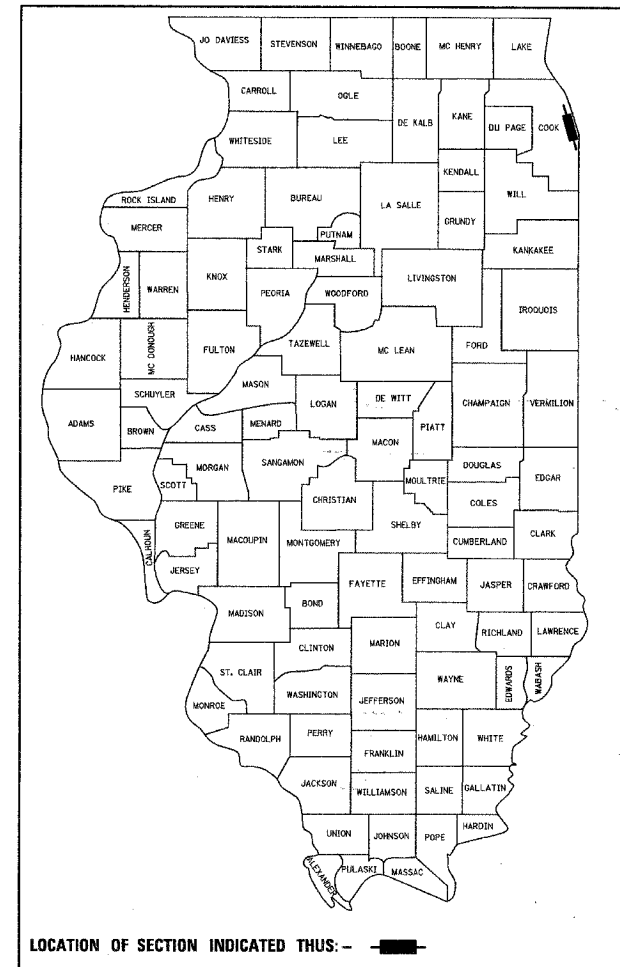
SOUTH TOWNSHIP
R. 14 E.



GROSS & NET LENGTH = 7,796 FEET = 1.478 MILES

F.A.I. RTE.	SECTION	COUNTY	TOTAL SHEETS	SHEET NO.
55	*	COOK	26	1
STA.		TO STA.		1 + 28
FED. ROAD DIST. NO.		ILLINOIS	FED. AID PROJECT	

* 1818 (.31 H & .32 H) I-4
CONTRACT NO. 60C92
D-91-277-07



LOCATION OF SECTION INDICATED THIS: -

STATE OF ILLINOIS
DEPARTMENT OF TRANSPORTATION
DIVISION OF HIGHWAYS
SUBMITTED April 17, 2008
Dina M. O'Keefe DEPUTY DIRECTOR OF HIGHWAYS, REGION ONE ENGINEER
May 9, 2008
Eric E. Harms ENGINEER OF DESIGN AND ENVIRONMENT
May 9, 2008
Christine M. Reed DIRECTOR OF HIGHWAYS, CHIEF ENGINEER



Bhadresh N. Shah APRIL 11, 2008
BHADRESH N. SHAH
LICENSED STRUCTURAL ENGINEER
STATE OF ILLINOIS LIC. No. 081-004476
EXPIRES: 11-30-08



CHRISTIAN-ROGE & ASSOCIATES, INC.
ENGINEERS / PLANNERS / SURVEYORS
211 W. WACKER DRIVE CHICAGO, IL 60606
TELEPHONE: 312-372-2023

PRINTED BY THE AUTHORITY
OF THE STATE OF ILLINOIS

DISTRICT ONE - DESIGN PROJECT MANAGER: ISAAC KWARTENG (847) 705-4230