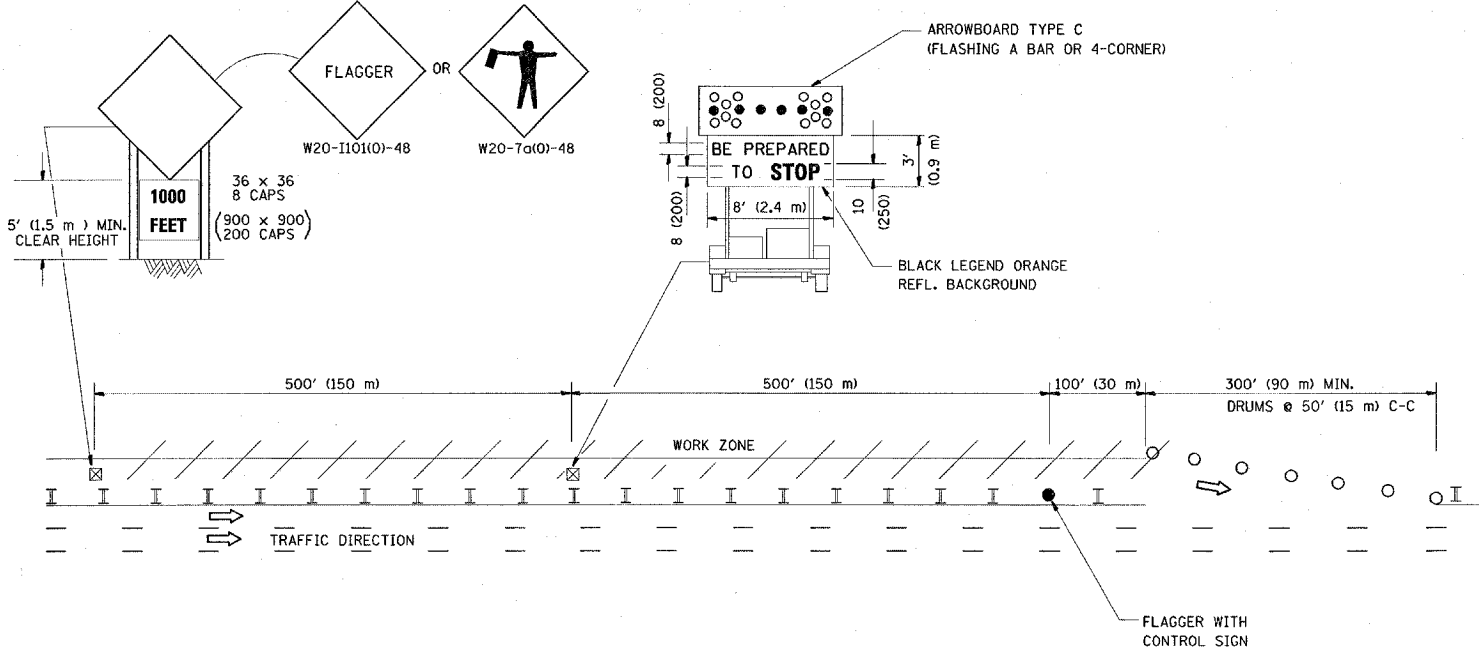
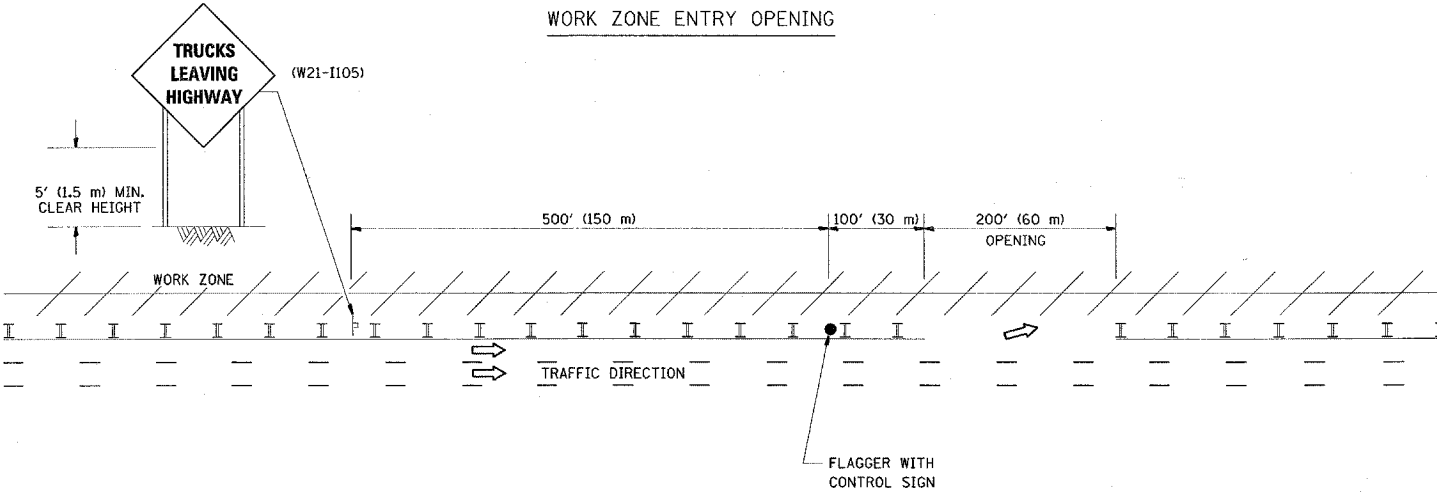


SIGNING FOR FLAGGING OPERATIONS AT WORK ZONE OPENINGS

WORK ZONE EXIT OPENING



WORK ZONE ENTRY OPENING



- NOTES:
1. The Arrowboard, the Flagger Ahead trailer mounted sign, and the Trucks Leaving Highway sign shall be removed or turned away from traffic and the exit and entry openings shall be closed when the flagging operation ceases.
 2. Work Zone Exit Openings should be a minimum of one half mile apart.
 3. Exiting the work zone at any place other than at a Work Zone Exit Opening will be prohibited.
 4. All vehicles shall enter the work zone at entry openings, using their turn signals to warn motorists

ALL DIMENSIONS ARE IN INCHES (MILLIMETERS) UNLESS OTHERWISE SHOWN

FILE NAME =	USER NAME = abreuah
ca:\projects\dl16908\dl16908.dgn	

DESIGNED -	REVISED - D.W.S. 08-98
DRAWN -	REVISED - J.A.F. 04-03
CHECKED -	REVISED - J.A.F. 02-06
DATE -	REVISED - S.P.B. 01-07

STATE OF ILLINOIS
DEPARTMENT OF TRANSPORTATION

SIGNING FOR FLAGGING OPERATIONS
AT WORK ZONE OPENINGS

SCALE: NONE SHEET NO. 1 OF 1 SHEETS STA. TO STA.

F.A.P. RTE.	SECTION	COUNTY	TOTAL SHEETS	SHEET NO.
870	534 RS-3	WILL	41	38
TC-18			CONTRACT NO. 60E08	
FED. ROAD DIST. NO. 1 ILLINOIS FED. AID PROJECT				