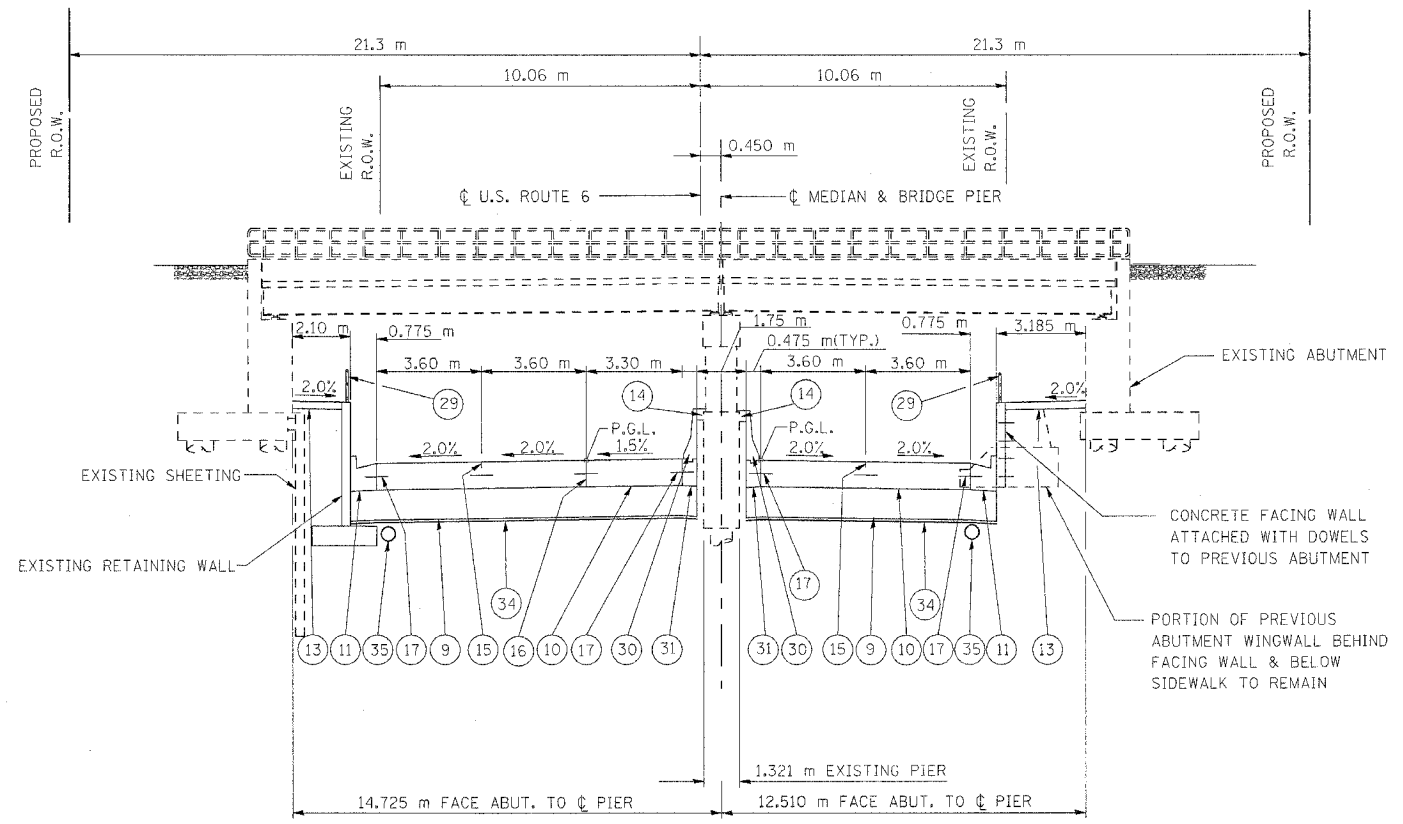


F.A.P. RTE.	SECTION	COUNTY	TOTAL SHEETS	SHEET NO.
351	2008-001VB	COOK	579	31
STA.	TO STA.			
FED. ROAD DIST. NO.	ILLINOIS	FED. AID PROJECT		
CONTRACT NO. 60E10				



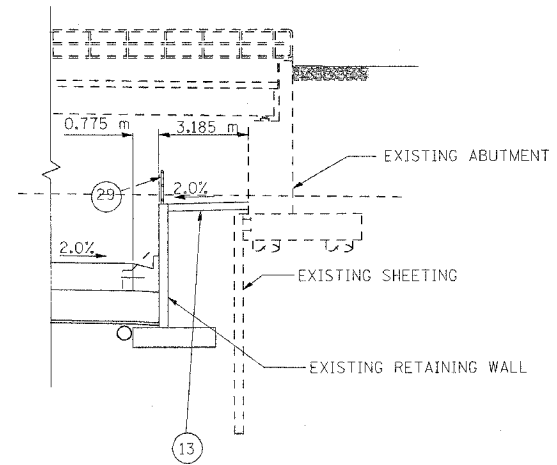
DETAILS @ N. SIDE ARE FROM  
 STA. 2+807.497 - STA. 2+824.261  
 (STA. 92+10.93 - STA. 92+65.93)

DETAILS @ MEDIAN ARE FROM  
 STA. 2+803.681 - STA. 2+819.174  
 (STA. 91+98.41 - STA. 92+49.24)

DETAILS @ S. SIDE ARE FROM  
 STA. 2+799.234 - STA. 2+805.787  
 (STA. 91+83.82 - STA. 92+05.32)

US ROUTE 6 (159TH STREET) AT EXISTING STRUCTURE NO. 016-2754

NOTE: ENGLISH STATIONING IS ALSO PROVIDED IN PARENTHESES FOR USE IN CORRELATING WITH STRUCTURE PLANS FOR BRIDGES AND RETAINING WALLS



DETAILS @ S. SIDE ARE FROM  
 STA. 2+805.787 - STA. 2+815.998  
 (STA. 92+05.32 - STA. 92+38.82)

LEGEND - PROPOSED

- 9 AGGREGATE SUBGRADE, 300 mm
- 10 PORTLAND CEMENT CEMENT PAVEMENT 260 mm (JOINTED)
- 11 COMBINATION CONCRETE CURB AND GUTTER, TYPE B-15.60
- 13 PORTLAND CEMENT CONCRETE SIDEWALK 125 mm
- 14 CONCRETE MEDIAN SURFACE, 150 mm
- 15 SAWED LONGITUDINAL JOINT WITH 750 mm DEFORMED EPOXY-COATED No. 19 TIE BARS @ 750mm CTS.
- 16 LONGITUDINAL CONSTRUCTION JOINT WITH 600 mm GROUTED IN PLACE DEFORMED EPOXY-COATED No. 19 TIE BARS @ 600 mm CTS.
- 17 600 mm DEFORMED EPOXY-COATED No. 19 TIE BARS @ 600 mm CTS.
- 29 BICYCLE RAILING
- 30 CONCRETE BARRIER, SINGLE FACE, 1065 mm HEIGHT (TRANSITION TOP OF BARRIER BETWEEN CONSTANT HEIGHT CRASHWALLS OF ADJACENT BRIDGE PIERS)
- 31 BARRIER BASE
- 34 FILTER FABRIC
- 35 PIPE UNDERDRAINS 100 mm

REVISIONS	
NAME	DATE

ILLINOIS DEPARTMENT OF TRANSPORTATION  
 US RTE 6 FROM LEXINGTON AVE TO FISK AVE  
 PROPOSED TYPICAL SECTIONS  
 U. S. ROUTE 6 (159TH STREET)  
 STA. 2+803.681 - STA. 2+819.174

DATE 02/21/08  
 DRAWN BY VAP  
 CHECKED BY NAP