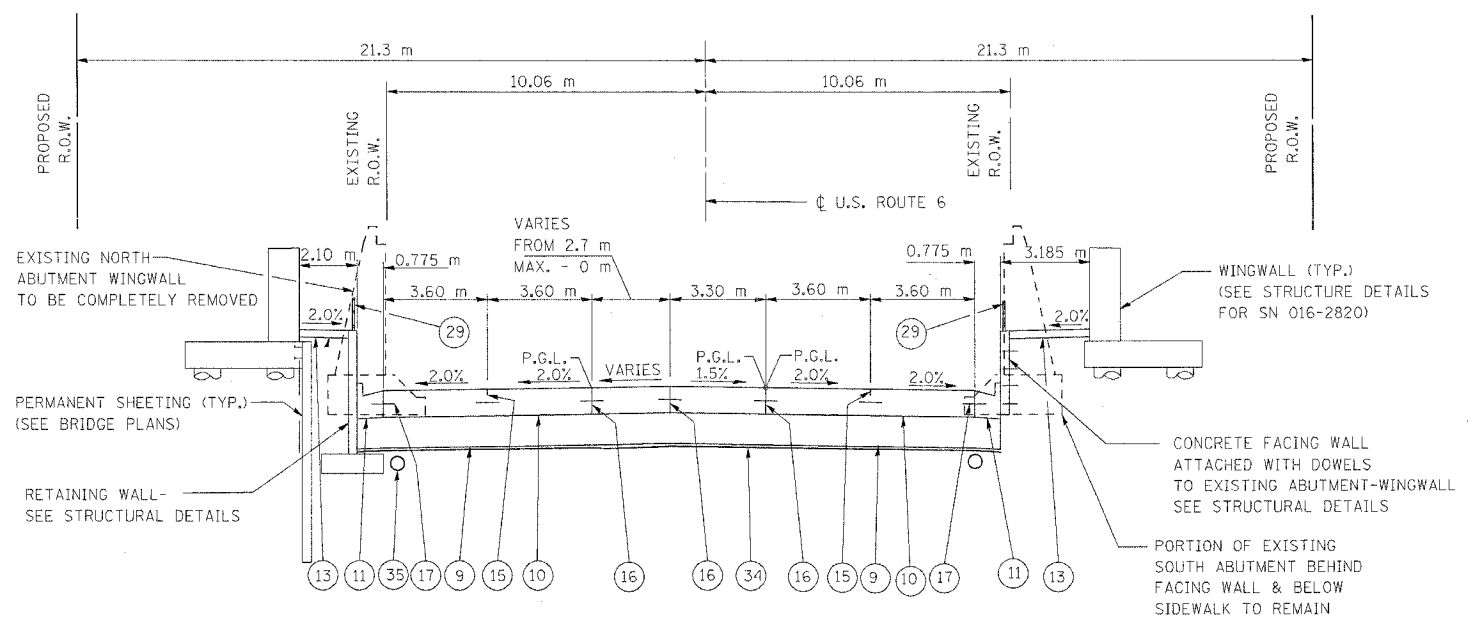


F.A.P. RTE.	SECTION	COUNTY	TOTAL SHEETS	SHEET NO.
351	2008-001VB	COOK	579	34
STA.		TO STA.		
FED. ROAD DIST. NO.		ILLINOIS	FED. AID PROJECT	
CONTRACT NO. 60E10				



NOTE: ENGLISH STATIONING IS ALSO PROVIDED IN PARENTHESES FOR USE IN CORRELATING WITH STRUCTURE PLANS FOR BRIDGES AND RETAINING WALLS

DETAILS @ N. SIDE ARE FROM  
STA. 2+944.557 - STA. 2+950.577  
(STA. 96+60.60 - STA. 96+80.35)

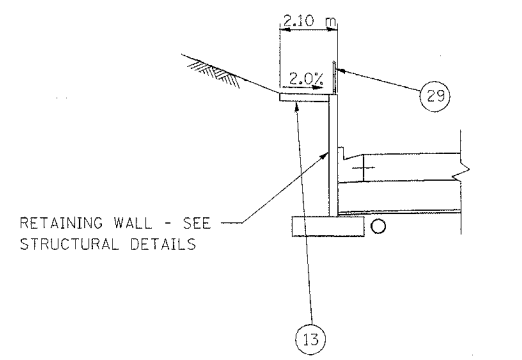
DETAILS @ MEDIAN ARE FROM  
STA. 2+944.727 - STA. 2+969.878  
(STA. 96+61.16 - STA. 97+43.68)

DETAILS @ S. SIDE ARE FROM  
STA. 2+944.557 - STA. 2+950.577  
(STA. 96+60.60 - STA. 96+70.48)

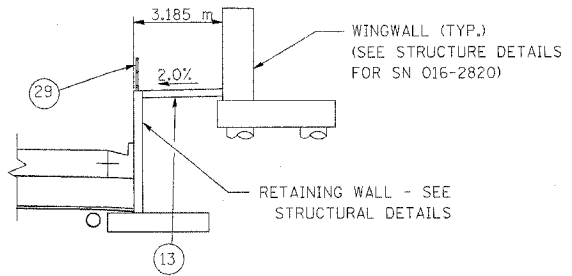
US ROUTE 6 (159TH STREET) EAST OF STRUCTURE NO. 016-2822

LEGEND - PROPOSED

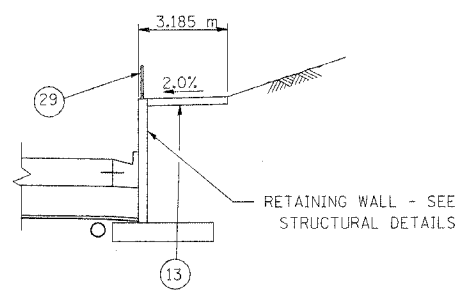
- 9 AGGREGATE SJBGRADE, 300 mm
- 10 PORTLAND CONCRETE CEMENT PAVEMENT 260 mm (JOINTED)
- 11 COMBINATION CONCRETE CURB AND GUTTER, TYPE B-15.60
- 13 PORTLAND CEMENT CONCRETE SIDEWALK 125 mm
- 15 SAWED LONGITUDINAL JOINT WITH 750 mm DEFORMED EPOXY-COATED No. 19 TIE BARS @ 750mm CTS.
- 16 LONGITUDINAL CONSTRUCTION JOINT WITH 600 mm GROUTED IN PLACE DEFORMED EPOXY-COATED No. 19 TIE BARS @ 600 mm CTS.
- 17 600 mm DEFORMED EPOXY-COATED No. 19 TIE BARS @ 600 mm CTS.
- 29 BICYCLE RAILING
- 30 CONCRETE BARRIER, SINGLE FACE, 1065 mm HEIGHT (TRANSITION TOP OF BARRIER BETWEEN CONSTANT HEIGHT CRASHWALLS OF ADJACENT BRIDGE PIERS)
- 31 BARRIER BASE
- 34 FILTER FABRIC
- 35 PIPE UNDERDRAINS 100 mm



DETAILS @ N. SIDE FROM  
STA. 2+950.577 - STA. 2+969.878  
(STA. 96+80.35 - STA. 97+43.68)



DETAILS @ S. SIDE FROM  
STA. 2+947.568 - STA. 2+950.577  
(STA. 96+70.48 - STA. 96+80.35)



DETAILS @ S. SIDE FROM  
STA. 2+950.757 - STA. 2+969.878  
(STA. 96+80.35 - STA. 97+43.68)

REVISIONS	
NAME	DATE

ILLINOIS DEPARTMENT OF TRANSPORTATION  
US RTE 6 FROM LEXINGTON AVE TO FISK AVE  
PROPOSED TYPICAL SECTIONS  
U. S. ROUTE 6 (159TH STREET)  
STA. 2+944.727 - STA. 2+969.878  
DATE 02/21/08  
DRAWN BY VAP  
CHECKED BY NAP