

BENCHMARKS

BM NO. 21	SET CROSS CUT ON WALK AT THE SOUTHEAST CORNER OF PARK AVENUE AND 159TH STREET	EL = 183.814 (EL = 603.06)
BM NO. 51	BOX CUT ON THE SOUTHWEST CORNER OF TRAFFIC HANDHOLE AT THE SOUTHEAST CORNER OF CAROL AVENUE AND 159TH STREET	EL = 184.317 (EL = 604.71)
BM NO. 52	CROSS CUT ON WESTERLY FLANGE BOLT ON FIRE HYDRANT AT THE NORTHWEST CORNER OF FINCH AVENUE AND 159TH STREET	EL = 184.897 (EL = 606.62)
BM NO. 53	BOX CUT ON THE SOUTHEASTERLY CORNER OF RAILROAD BRIDGE PIER IN THE C OF 159TH STREET AT EAST FACE OF BRIDGE APPROX. 30-METERS (100') WEST OF CENTER AVE.	EL = 183.871 (EL = 603.25)
BM NO. 54	CHISELED CROSS ON WESTERLY BOLT OF FIRE HYDRANT AT THE NORTHWEST CORNER OF LEXINGTON AVENUE AND 159TH STREET	EL = 185.274 (EL = 607.85)
BM NO. 55	CHISELED BOX CUT ON SOUTH SIDE OF CONCRETE BASE FOR MAST ARM LIGHT POLE ON THE NORTH SIDE OF 159TH ST. ON EAST BACK OF CURB OF GAUGER AVENUE EXTENDED NORTH	EL = 185.441 (EL = 608.40)
BM NO. 56	CHISELED CROSS ON WESTERLY FLANGE BOLT OF FIRE HYDRANT AT THE NORTHWEST CORNER OF ASHLAND AVENUE AND 159TH STREET	EL = 185.600 (EL = 608.92)
BM NO. 57	SET BOX CUT ON SOUTHWEST CORNER OF 1-METER (3') LONG GARAGE APRON ON THE NORTH SIDE OF 159TH STREET ON THE WEST FACE OF 1-STORY BRICK AND BLOCK BUILDING BETWEEN PAULINA AVENUE AND MARSHFIELD AVENUE	EL = 185.561 (EL = 608.80)
BM NO. 58	SET CHISELED CROSS ON WESTERLY FLANGE BOLT OF FIRE HYDRANT AT THE NORTHWEST CORNER OF PAGE AVENUE AND 159TH STREET	EL = 185.847 (EL = 609.73)
BM NO. 59	SET CUT CROSS ON CONCRETE BASE OF LIGHT POLE WITH MAST ARM ON THE NORTH SIDE OF 159TH STREET (1ST LIGHT POLE WEST OF LINCOLN AVENUE)	EL = 185.636 (EL = 609.04)

BM NO. 60	BOX CUT ON SOUTHWEST CORNER OF CONCRETE BASE OF TRAFFIC SIGNAL LIGHT ON THE NORTHEAST CORNER OF DIXIE HIGHWAY AND 159TH STREET	EL = 185.715 (EL = 609.30)
BM NO. 62	CHISELED CROSS ON THE NORTHERLY BOLT OF FIRE HYDRANT ON THE NORTH SIDE OF 159TH STREET AND +/- CENTER LINE OF CLAREMONT AVENUE EXTENDED	EL = 186.295 (EL = 611.20)
BM NO. 63	CHISELED CROSS ON SOUTHWESTLY BOLT ON FLANGE OF 1ST FIRE HYDRANT NORTH OF 1ST ALLEY SOUTH OF 157TH STREET ON THE EAST SIDE OF WEST AVENUE	EL = 184.791 (EL = 606.27)
BM NO.65	BOX CUT ON TOP OF 0.45 m (18") RCP FLARED END SECTION ON THE SOUTH SIDE OF ENTRANCE TO (ALIED-TUBE CONDUIT) GATE 2 ON THE EAST SIDE OF CENTER STREET	EL = 184.896 (EL = 606.61)

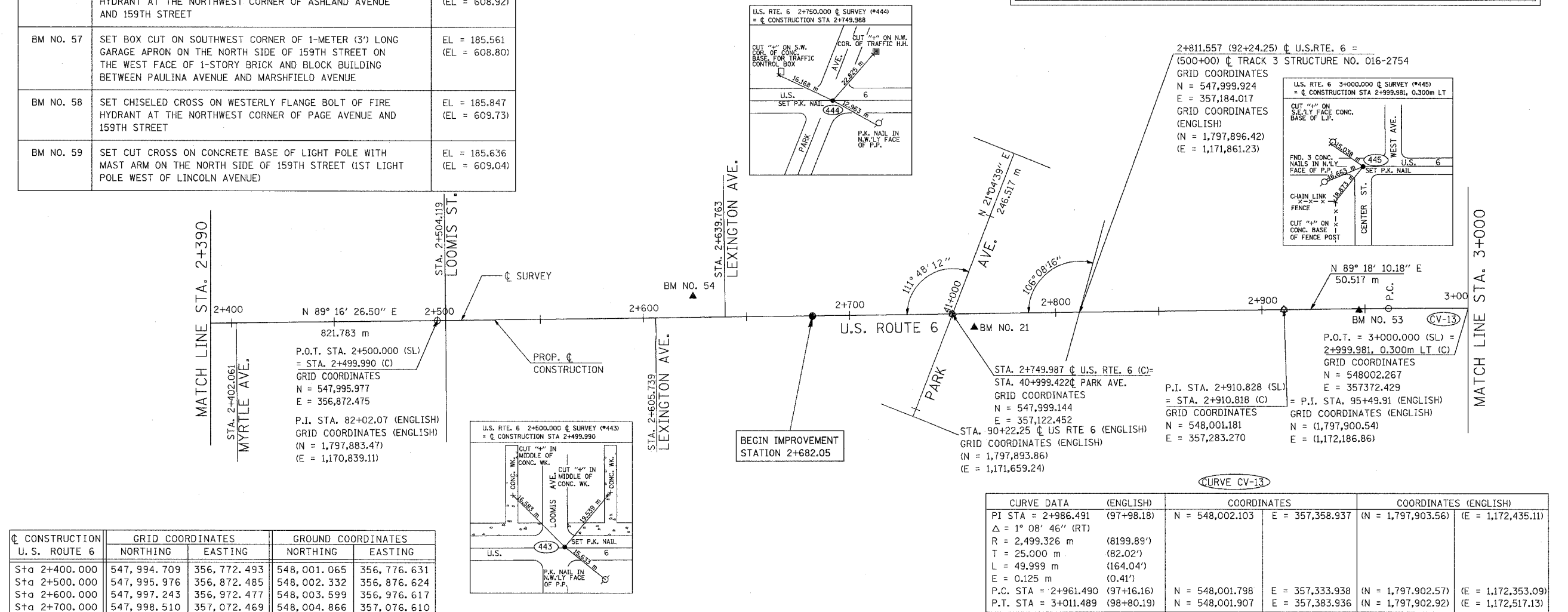
NOTE: SURVEY LINE (SL) STATIONING AT GROUND  
CONSTRUCTION LINE (C) STATIONING AT GRID.

F.A.P. RTE.	SECTION	COUNTY	TOTAL SHEETS	SHEET NO.
351	2008-001VB	COOK	579	40
STA. 2+390		TO STA. 3+000		
FED. ROAD DIST. NO.		ILLINOIS FED. AID PROJECT		
CONTRACT NO. 60E10				



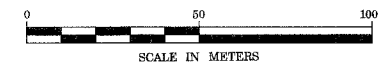
NOTE: DIMENSIONS AND ELEVATION IN BRACKETS "( )" ARE IN ENGLISH UNITS OF MEASURE.

NOTE: A LOCAL COORDINATE SYSTEM WAS USED FOR THE LAYOUT OF ALL TRACK CONSTRUCTION, PLANS AND COORDINATES GIVEN IN THE TRACK PLANS USE THE LOCAL COORDINATE SYSTEM. THE LOCAL RAILROAD COORDINATES SYSTEM DIFFERS FROM THE STATE PLANE COORDINATE SYSTEM USED FOR ALL ROADWAY PLANS. A TABLE CONTAINING SIMILAR POINTS IS PROVIDED IN THE RAILROAD TRACK LAYOUT PLANS.



C CONSTRUCTION U.S. ROUTE 6	GRID COORDINATES		GROUND COORDINATES	
	NORTHING	EASTING	NORTHING	EASTING
Sta 2+400.000	547,994.709	356,772.493	548,001.065	356,776.631
Sta 2+500.000	547,995.976	356,872.485	548,002.332	356,876.624
Sta 2+600.000	547,997.243	356,972.477	548,003.599	356,976.617
Sta 2+700.000	547,998.510	357,072.469	548,004.866	357,076.610
Sta 2+800.000	547,999.777	357,172.461	548,006.133	357,176.604
Sta 2+900.000	548,001.044	357,272.453	548,007.400	357,276.597
Sta 3+000.000	548,001.967	357,372.447	548,008.324	357,376.592

CURVE DATA (ENGLISH)		COORDINATES		COORDINATES (ENGLISH)	
PI STA = 2+986.491	(97+98.18)	N = 548,002.103	E = 357,358.937	(N = 1,797,903.56)	(E = 1,172,435.11)
Δ = 1° 08' 46" (RT)					
R = 2,499.326 m	(8199.89')				
T = 25.000 m	(82.02')				
L = 49.999 m	(164.04')				
E = 0.125 m	(0.41')				
P.C. STA = 2+961.490	(97+16.16)	N = 548,001.798	E = 357,333.938	(N = 1,797,902.57)	(E = 1,172,353.09)
P.T. STA = 3+011.489	(98+80.19)	N = 548,001.907	E = 357,383.936	(N = 1,797,902.92)	(E = 1,172,517.13)



**URS**  
100 S. WACKER DR., SUITE 500  
CHICAGO, ILLINOIS 60606  
TEL. (312) 939-1000  
FAX (312) 939-4198

REVISIONS		ILLINOIS DEPARTMENT OF TRANSPORTATION US RTE 6 FROM LEXINGTON AVE TO FISK AVE ALIGNMENT, TIES AND BENCHMARKS STA. 2+390 TO STA. 3+000
NAME	DATE	
		AT-03
		DRAWN BY VAP
		CHECKED BY NAP
		DATE 02/21/08