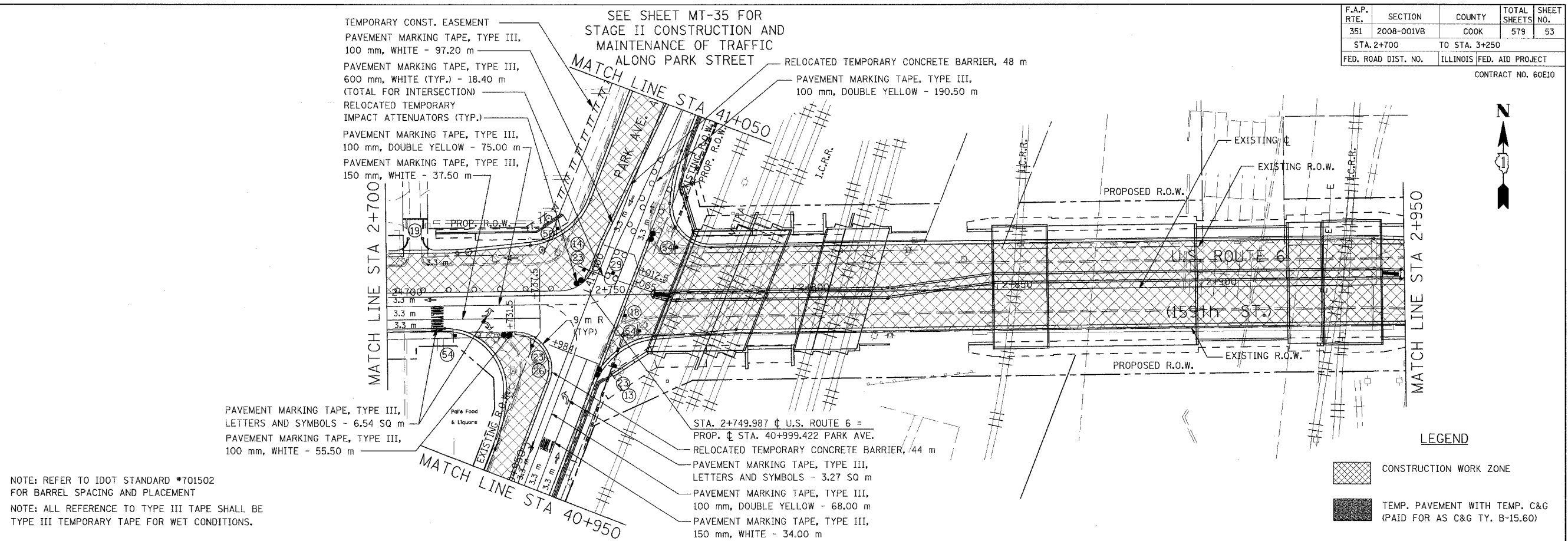


F.A.P. RTE.	SECTION	COUNTY	TOTAL SHEETS	SHEET NO.
351	2008-001VB	COOK	579	53
STA. 2+700		TO STA. 3+250		
FED. ROAD DIST. NO.		ILLINOIS FED. AID PROJECT		

CONTRACT NO. 60E10

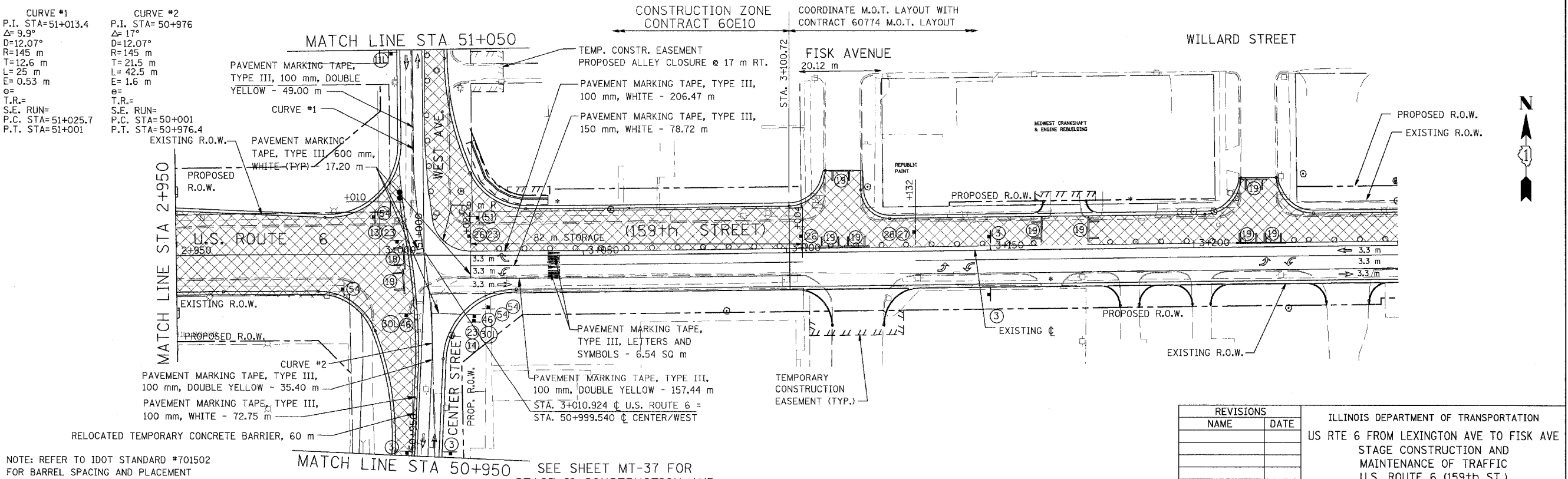


NOTE: REFER TO IDOT STANDARD #701502 FOR BARREL SPACING AND PLACEMENT
 NOTE: ALL REFERENCE TO TYPE III TAPE SHALL BE TYPE III TEMPORARY TAPE FOR WET CONDITIONS.

LEGEND

	CONSTRUCTION WORK ZONE
	TEMP. PAVEMENT WITH TEMP. C&G (PAID FOR AS C&G TY. B-15.60)

CURVE #1	CURVE #2
P.I. STA=51+013.4	P.I. STA=50+976
Δ=9.9°	Δ=17°
D=12.07°	D=12.07°
R=145 m	R=145 m
T=12.6 m	T=21.5 m
L=25 m	L=42.5 m
E=0.53 m	E=1.6 m
e=	e=
T.R.=	T.R.=
S.E. RUN=	S.E. RUN=
P.C. STA=51+025.7	P.C. STA=50+001
P.T. STA=51+001	P.T. STA=50+976.4

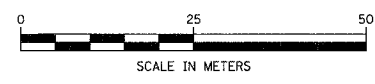


NOTE: REFER TO IDOT STANDARD #701502 FOR BARREL SPACING AND PLACEMENT

NOTE: ALL REFERENCE TO TYPE III TAPE SHALL BE TYPE III TEMPORARY TAPE FOR WET CONDITIONS.

SEE SHEET MT-37 FOR STAGE II CONSTRUCTION AND MAINTENANCE OF TRAFFIC ALONG CENTER ST. AND WEST AVE.

* DRIVEWAY TO BE CLOSED



REVISIONS	
NAME	DATE

ILLINOIS DEPARTMENT OF TRANSPORTATION
 US RTE 6 FROM LEXINGTON AVE TO FISK AVE
 STAGE CONSTRUCTION AND MAINTENANCE OF TRAFFIC
 U.S. ROUTE 6 (159th ST.)
 STAGE II
 MT-26
 DATE 02/21/08
 DRAWN BY TJJ
 CHECKED BY JWK

URS 100 S. WACKER DR., SUITE 500
 CHICAGO, ILLINOIS 60606
 TEL. (312) 939-1000
 FAX (312) 939-4198