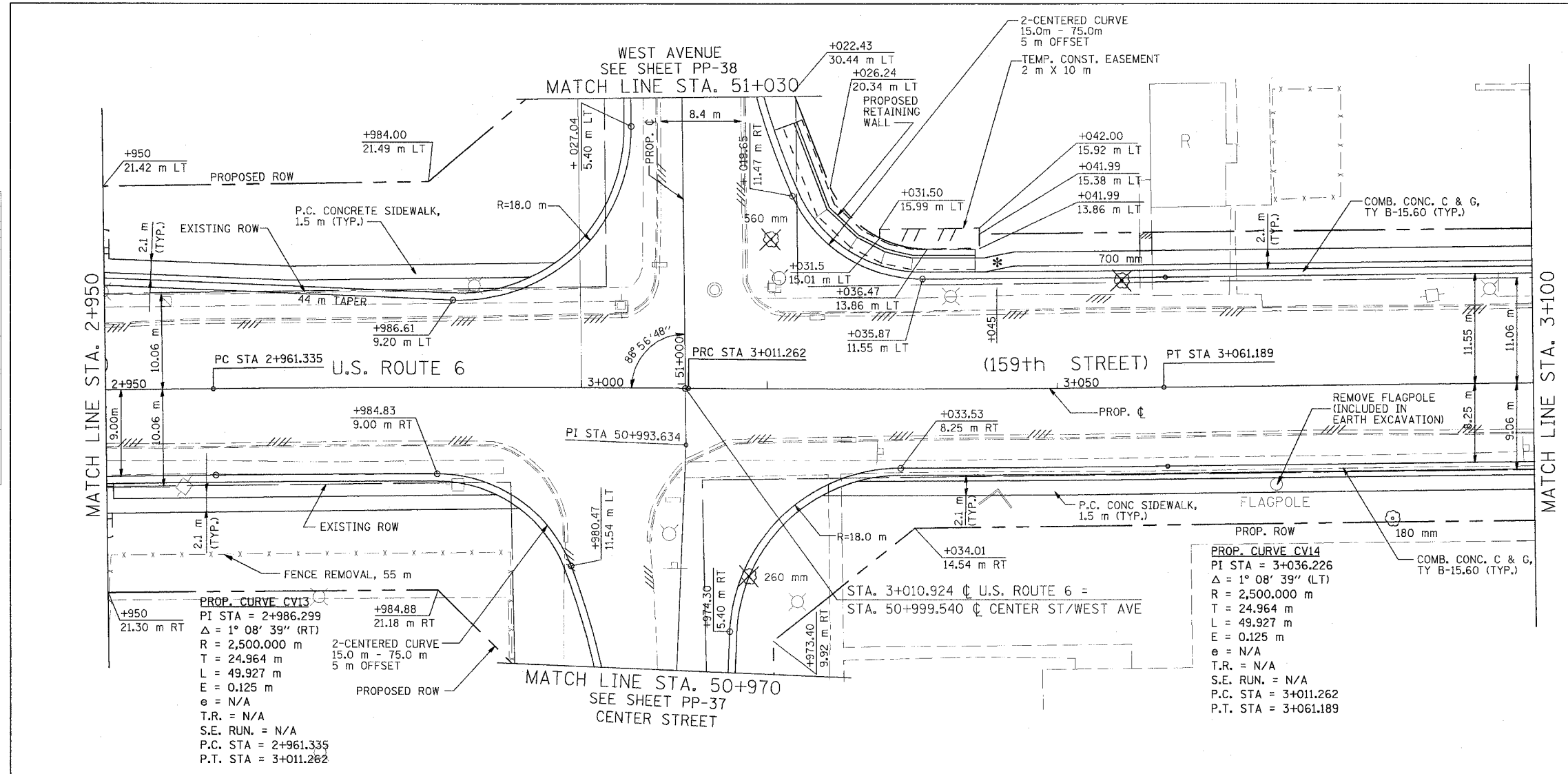
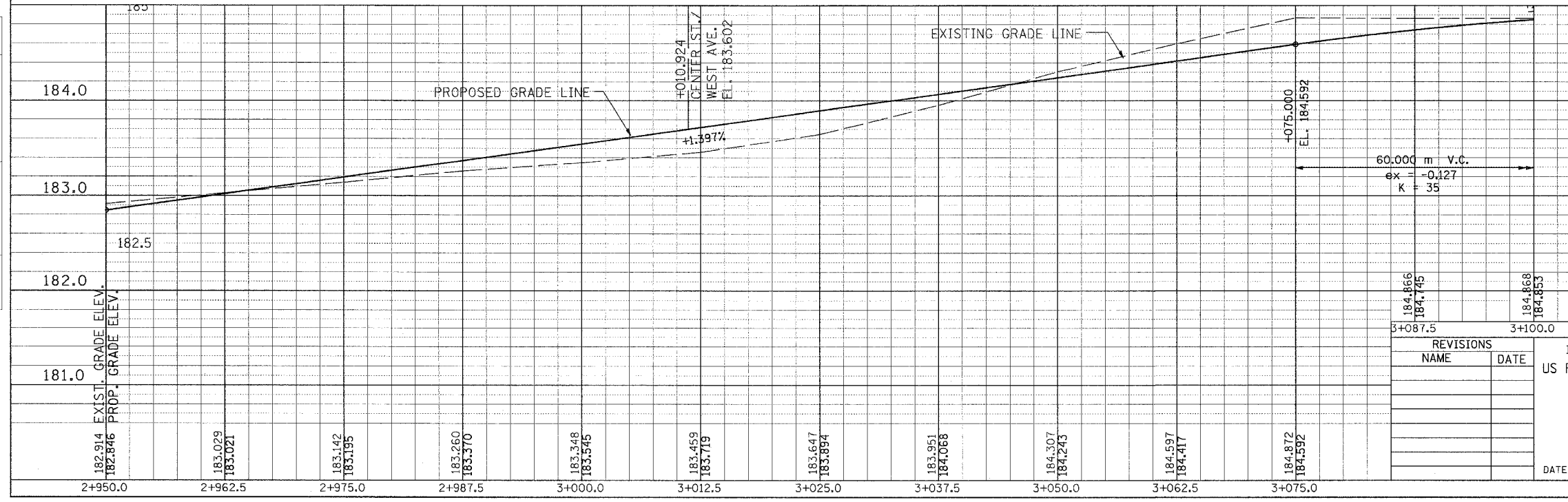


F.A.P. RTE.	SECTION	COUNTY	TOTAL SHEETS	SHEET NO.
351	2008-001VB	COOK	579	63
STA.	2+950	TO STA.	3+100	
FED. ROAD DIST. NO.	ILLINOIS	FED. AID PROJECT		
CONTRACT NO. 60E10				

FINAL SURVEY PLOTTED	BY	DATE
NOTE BOOK TEMPLATE		
AREAS CHECKED		
NO.		



ORIGINAL SURVEY PLOTTED	BY	DATE
NOTE BOOK TEMPLATE		
AREAS CHECKED		
NO.		



LEGEND:

- * DRIVEWAY TO BE CLOSED
- ⊗ TREE TO BE REPLACED
- ⊙ TREE TO BE PROTECTED
- /// REMOVAL

0 12.5 25
HORIZONTAL SCALE IN METERS

0 1 2
VERTICAL SCALE IN METERS

REVISIONS	
NAME	DATE

ILLINOIS DEPARTMENT OF TRANSPORTATION
US RTE 6 FROM LEXINGTON AVE TO FISK AVE

PLAN AND PROFILE
STA. 2+950 TO STA. 3+100

PP-19 DRAWN BY VAP
DATE 02/21/08 CHECKED BY JRP