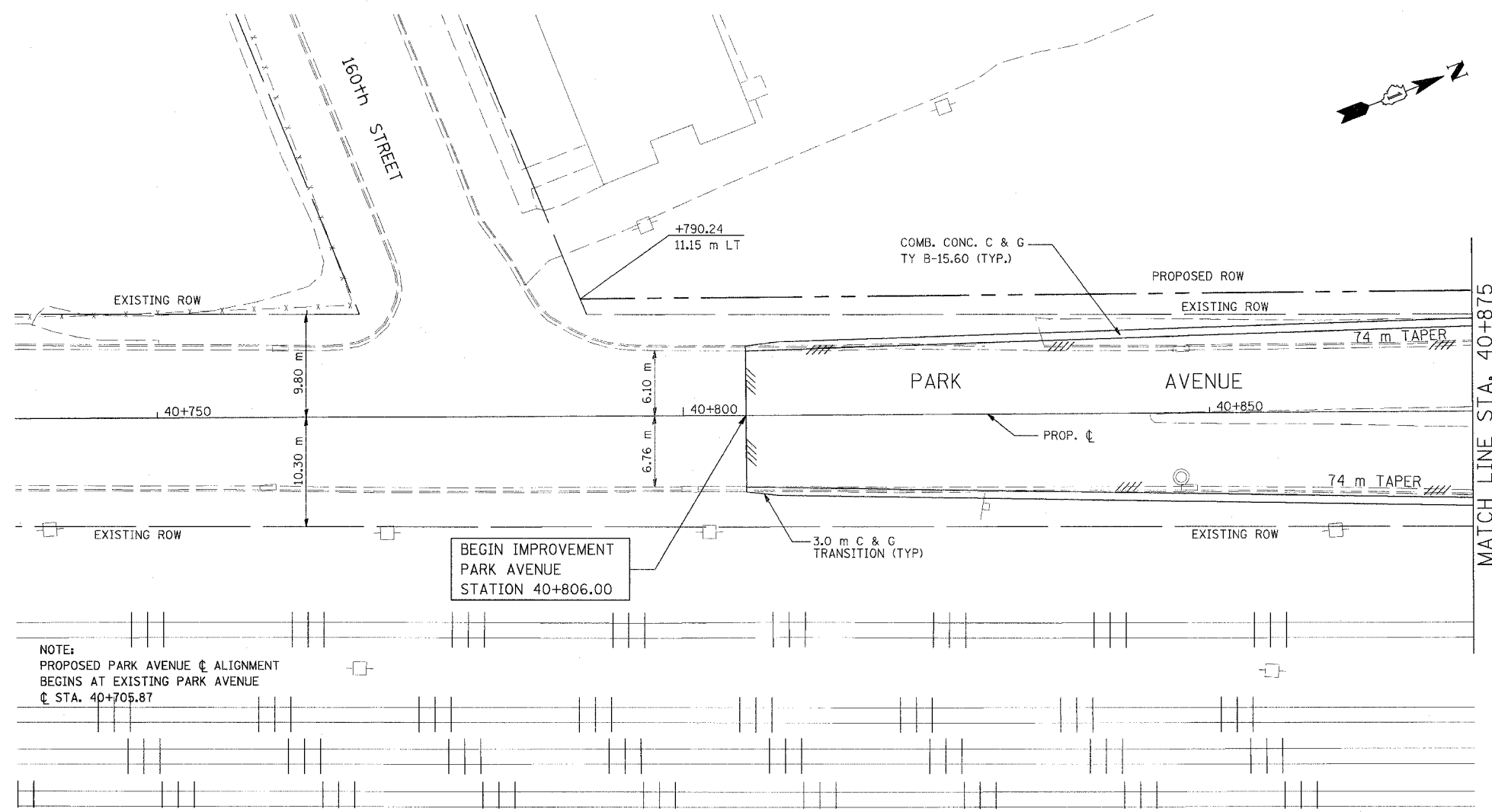


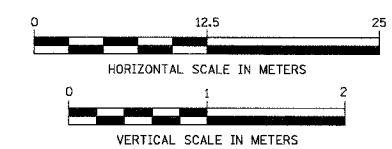
F.A.P. RTE.	SECTION	COUNTY	TOTAL SHEETS	SHEET NO.
351	2008-001VB	COOK	579	65
STA. 40+806		TO STA. 40+875		
FED. ROAD DIST. NO.	ILLINOIS	FED. AID PROJECT		
CONTRACT NO. 60E10				

FINAL SURVEY PLOTTED	DATE
NO.	
AREAS CHECKED	

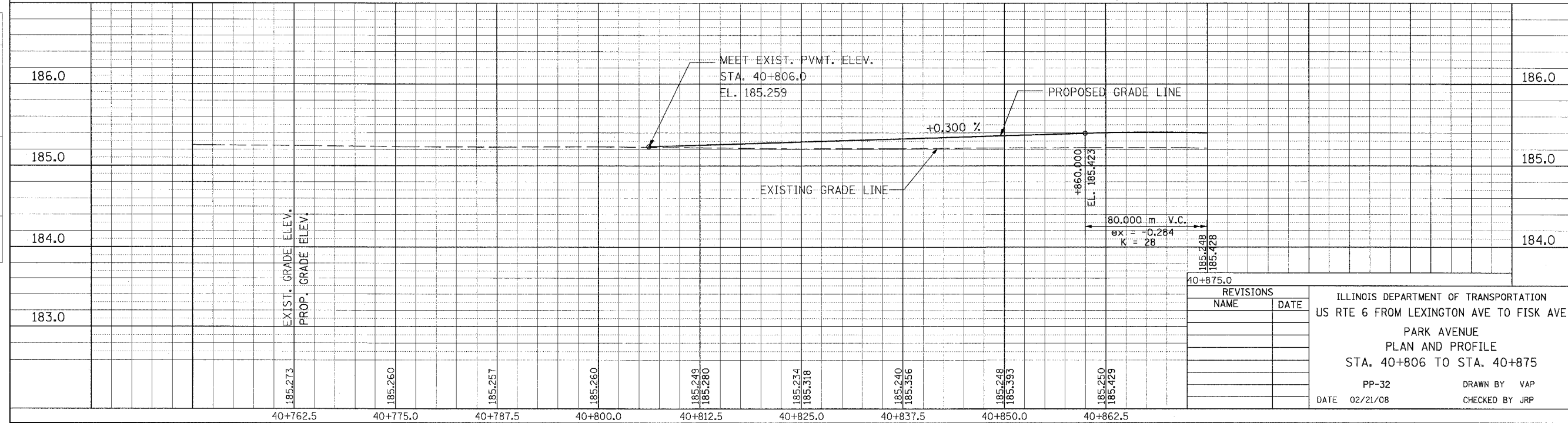


NOTE:
PROPOSED PARK AVENUE CL ALIGNMENT BEGINS AT EXISTING PARK AVENUE CL STA. 40+705.87

- LEGEND:
- * DRIVEWAY TO BE CLOSED
 - ⊗ TREE TO BE REPLACED
 - ⊙ TREE TO BE PROTECTED
 - /// REMOVAL



ORIGINAL SURVEY PLOTTED	DATE
NO.	
AREAS CHECKED	



REVISIONS	
NAME	DATE

ILLINOIS DEPARTMENT OF TRANSPORTATION
US RTE 6 FROM LEXINGTON AVE TO FISK AVE
PARK AVENUE
PLAN AND PROFILE
STA. 40+806 TO STA. 40+875

PP-32 DRAWN BY VAP
DATE 02/21/08 CHECKED BY JRP