



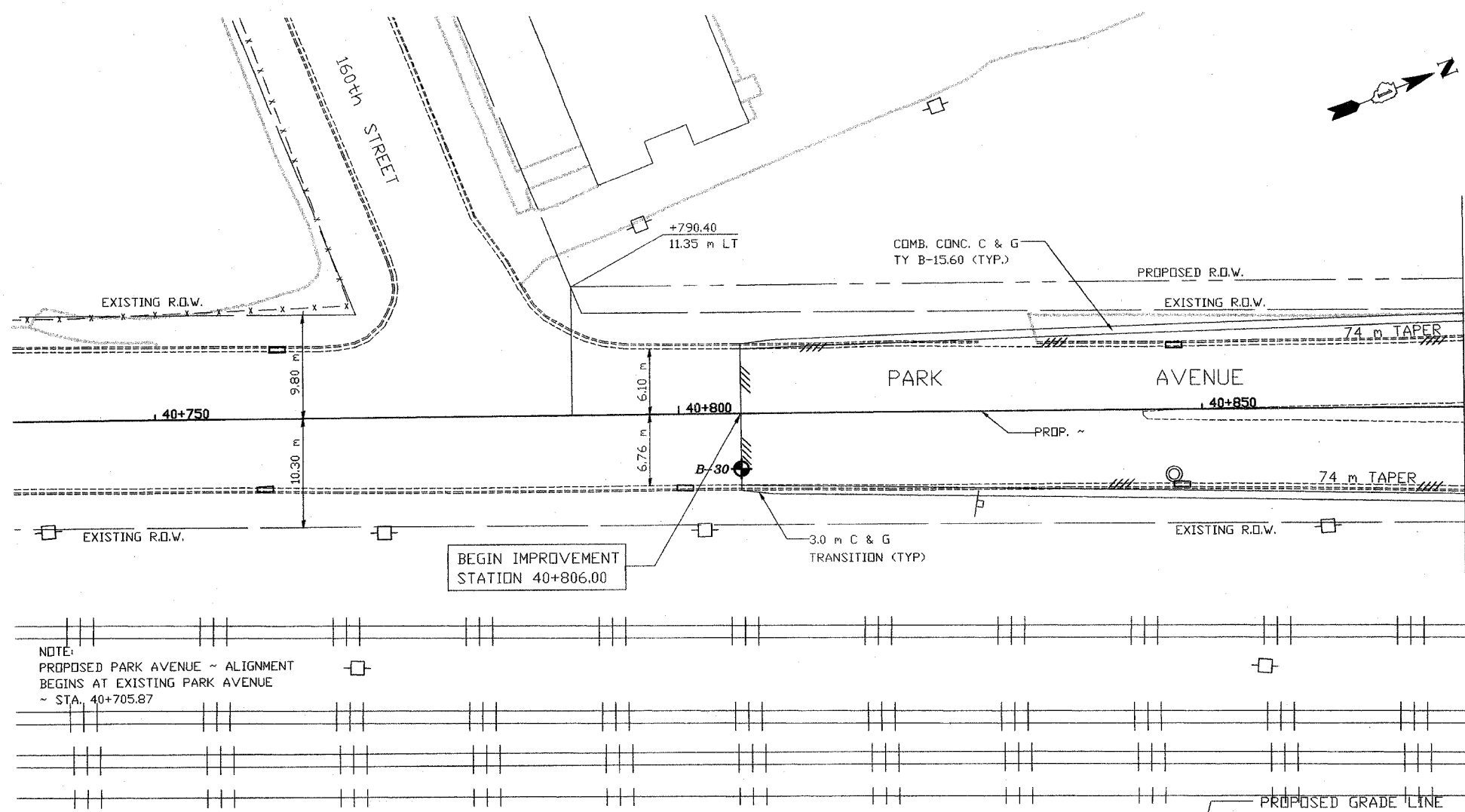
STS Consultants Ltd.
Consulting Engineers
STS PROJECT NO.: 32646

DRAWN BY: CJD 4-10-02
CHECKED BY: SEK 4-10-02
APPROVED BY: TDB 4-10-02

BY	DATE
FINAL SURVEYED	
SURVEY PLOTTED	
NOTE BOOK TEMPLATE	
AREAS CHECKED	
NO.	

BY	DATE
ORIGINAL SURVEYED	
SURVEY PLOTTED	
NOTE BOOK TEMPLATE	
AREAS CHECKED	
NO.	

X:\PROJECTS\32646\PROFILES\
40+806-40+875.dwg
04/09/2002 22:45



NOTE:
PROPOSED PARK AVENUE ~ ALIGNMENT
BEGINS AT EXISTING PARK AVENUE
~ STA. 40+705.87

F.A. RTE.	SECTION	COUNTY	TOTAL SHEETS	SHEET NO.
351	3277R	COOK	579	111
STA. 40+805.00		TO STA. 40+875		
FED. ROAD DIST. NO.		ILLINOIS FED. AID PROJECT		

LEGEND

B-43 BORING PERFORMED BY STS CONSULTANTS LTD. (FEB. 2002)

B-43 BORING NO.

N, Qp (kPa) @ 175 22.1, 200 WATER CONTENT (%), Qu (kPa)

WATER LEVEL DURING DRILLING

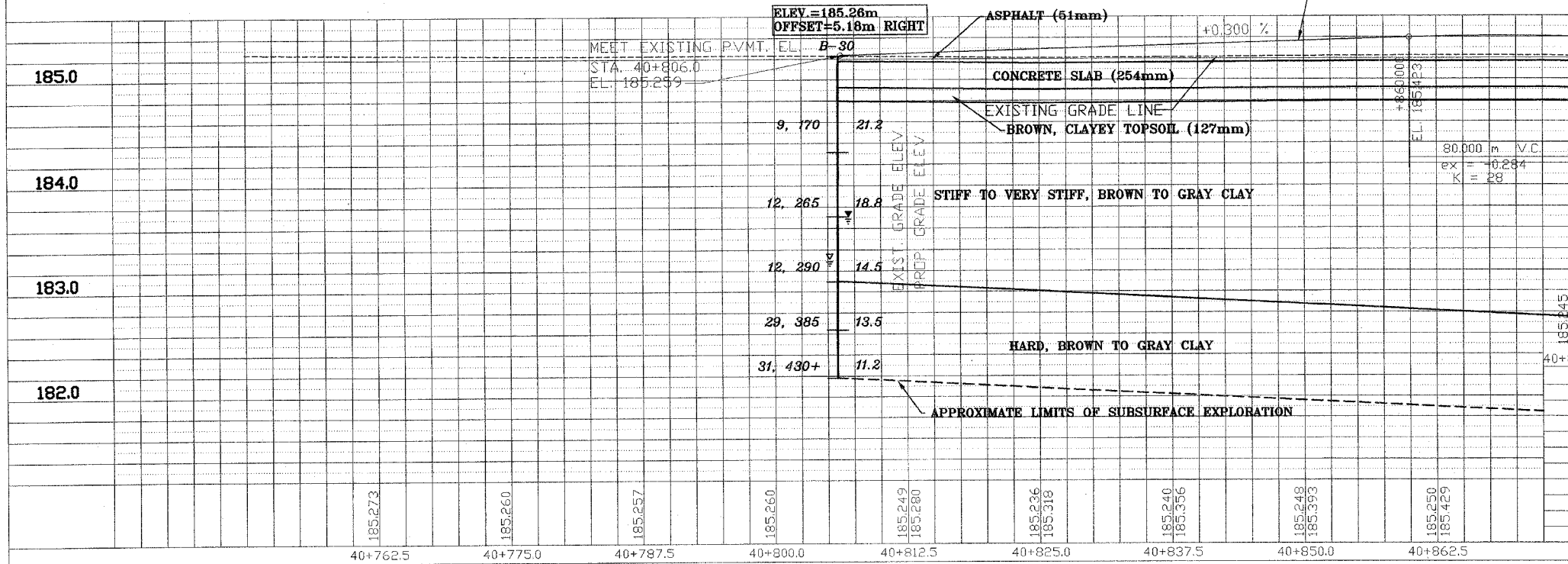
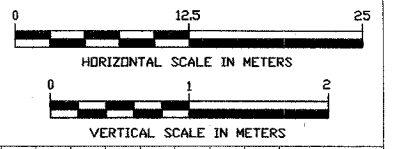
DELAYED WATER LEVEL

DRY NOTE: DRY INDICATED IF GROUNDWATER NOT ENCOUNTERED

NOTE:
THE STRATA LINES SHOWN ARE INTERPOLATED FROM DATA OBTAINED AT BORING LOCATIONS. ACTUAL SOIL CONDITIONS IN-SITU MAY VARY.

LEGEND:

- DRIVEWAY TO BE CLOSED
- TREE TO BE REPLACED
- TREE TO BE PROTECTED
- REMOVAL



REVISIONS	NAME	DATE

ILLINOIS DEPARTMENT OF TRANSPORTATION
US RTE 6 FROM I-294 TO IL RTE 1
PARK AVENUE
PLAN AND PROFILE
STA. 40+806 TO STA. 40+875
DRAWN BY: VAP
CHECKED BY: JRP
DATE: 12/20/00