



STS Consultants Ltd.  
Consulting Engineers  
STS PROJECT NO.: 32646

|             |     |         |
|-------------|-----|---------|
| DRAWN BY    | CJD | 4-10-02 |
| CHECKED BY  | SEK | 4-10-02 |
| APPROVED BY | TDB | 4-10-02 |

|                    |      |
|--------------------|------|
| BY                 | DATE |
| FINAL SURVEY       |      |
| SURVEY PLOTTED     |      |
| NOTE BOOK TEMPLATE |      |
| AREAS CHECKED      |      |
| NO.                |      |

|                    |      |
|--------------------|------|
| BY                 | DATE |
| ORIGINAL SURVEYED  |      |
| SURVEY PLOTTED     |      |
| NOTE BOOK TEMPLATE |      |
| AREAS CHECKED      |      |
| NO.                |      |

X:\PROJECTS\32646\PROFILES\40+875\_40+970.dwg  
04/10/2002 13:00

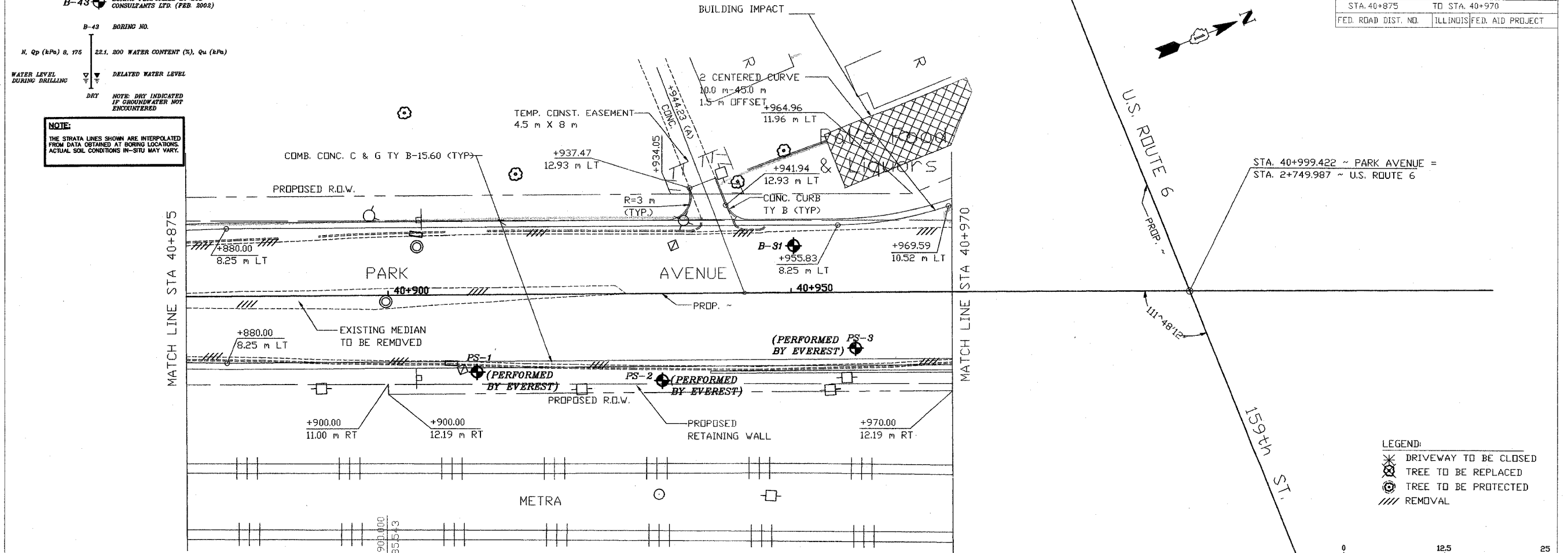
**LEGEND**

B-43 BORING PERFORMED BY STS CONSULTANTS LTD. (FEB. 2002)

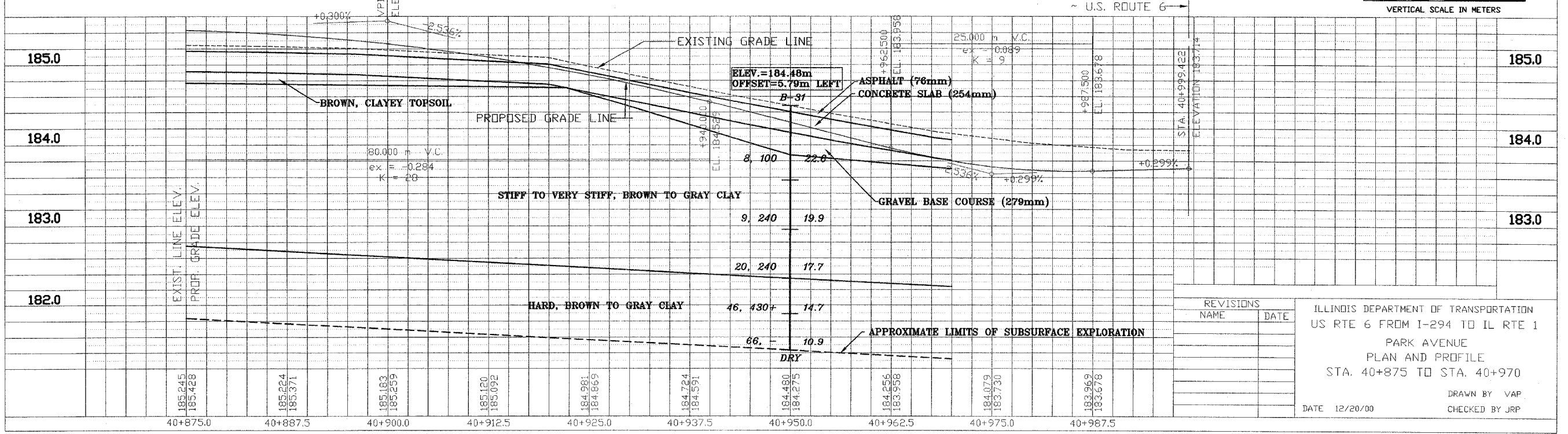
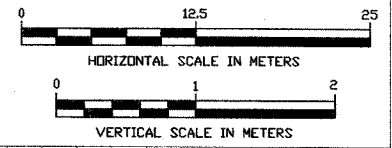
B-43 BORING NO.  
N, Qp (kPa) 8, 175 22.1, 200 WATER CONTENT (%), Qu (kPa)  
WATER LEVEL DURING DRILLING  
DELAYED WATER LEVEL  
NOTE: DRY INDICATED IF GROUNDWATER NOT ENCOUNTERED

**NOTE:**  
THE STRATA LINES SHOWN ARE INTERPOLATED FROM DATA OBTAINED AT BORING LOCATIONS. ACTUAL SOIL CONDITIONS IN-SITU MAY VARY.

|                     |         |                           |              |           |
|---------------------|---------|---------------------------|--------------|-----------|
| F.A. RTE.           | SECTION | COUNTY                    | TOTAL SHEETS | SHEET NO. |
| 351                 | 3277R   | COOK                      | 579          | 112       |
| STA. 40+875         |         | TO STA. 40+970            |              |           |
| FED. ROAD DIST. NO. |         | ILLINOIS FED. AID PROJECT |              |           |



**LEGEND:**  
 ✖ DRIVEWAY TO BE CLOSED  
 ⊗ TREE TO BE REPLACED  
 ⊙ TREE TO BE PROTECTED  
 // REMOVAL



| REVISIONS | NAME | DATE |
|-----------|------|------|
|           |      |      |
|           |      |      |
|           |      |      |

ILLINOIS DEPARTMENT OF TRANSPORTATION  
 US RTE 6 FROM I-294 TO IL RTE 1  
 PARK AVENUE  
 PLAN AND PROFILE  
 STA. 40+875 TO STA. 40+970  
 DRAWN BY VAP  
 CHECKED BY JRP  
 DATE 12/20/00