



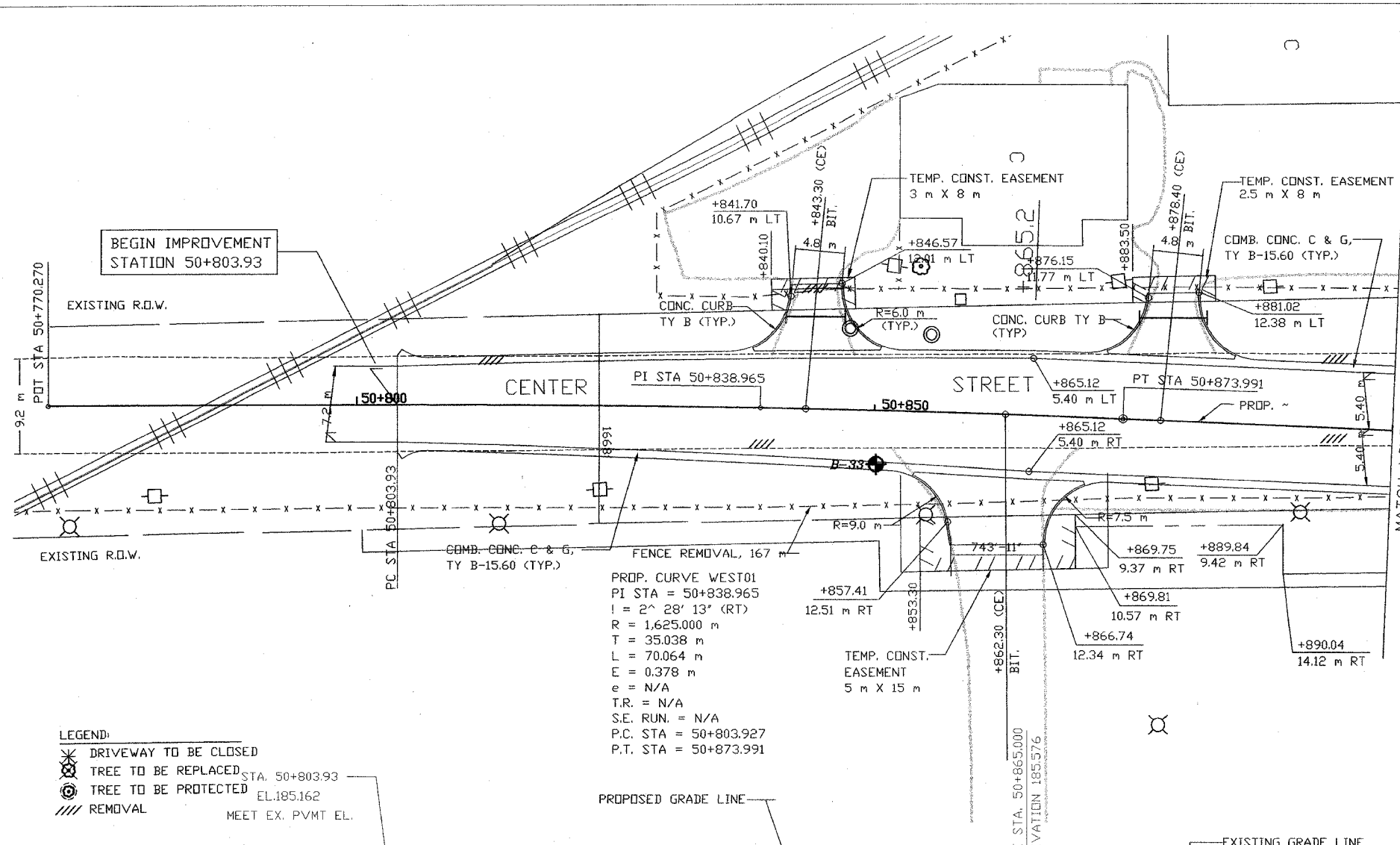
STS Consultants Ltd.  
Consulting Engineers

STS PROJECT NO.: 32646

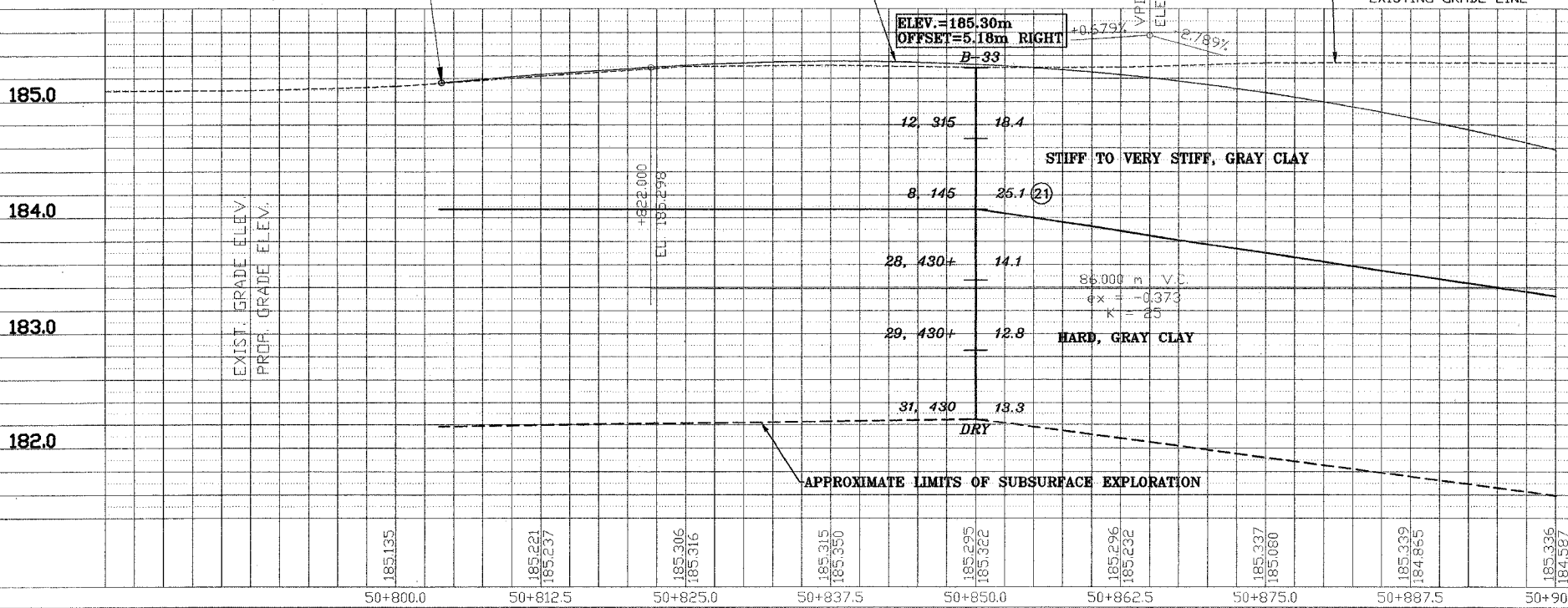
DRAWN BY	CJD	4-10-02
CHECKED BY	SEK	4-10-02
APPROVED BY	TDB	4-10-02

F.A. RTE.	SECTION	COUNTY	TOTAL SHEETS NO.	SHEET
351	3277R	COOK	579	115
STA. 50+803.93		TD STA. 50+900		
FED. ROAD DIST. NO.		ILLINOIS FED. AID PROJECT		

FINAL SURVEYED	BY	DATE
SURVEY PLOTTED		
NOTE BOOK TEMPLATE		
AREAS CHECKED		
NO.		



ORIGINAL SURVEYED	BY	DATE
SURVEY PLOTTED		
NOTE BOOK TEMPLATE		
AREAS CHECKED		
NO.		



**LEGEND**

**B-43** BORING PERFORMED BY STS CONSULTANTS LTD. (FEB. 2002)

**B-43** BORING NO.

**N, Qp (kPa) 8, 176** 22.1, 200 WATER CONTENT (%), Q<sub>u</sub> (kPa)

**WATER LEVEL** **DELAYED WATER LEVEL**

**DURING DRILLING** **NOTE: DRY INDICATED IF GROUNDWATER NOT ENCOUNTERED**

**NOTE:**

THE STRATA LINES SHOWN ARE INTERPOLATED FROM DATA OBTAINED AT BORING LOCATIONS. ACTUAL SOIL CONDITIONS IN-SITU MAY VARY.

**(1)** INDICATES ADDITIONAL LAB TESTING PERFORMED

DEPTH (METERS)

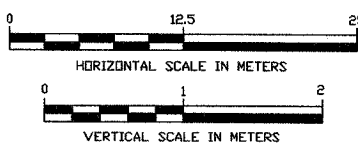
SOIL CLASSIFICATION

AASHTO CLASSIFICATION

LIQUID LIMIT, LL (%)

PLASTIC LIMIT, PL (%)

TOTAL ORGANIC MATTER, (T.O.M.) (%)



REVISIONS	
NAME	DATE

ILLINOIS DEPARTMENT OF TRANSPORTATION  
 US RTE 6 FROM I-294 TO IL RTE 1  
 CENTER STREET  
 PLAN AND PROFILE  
 STA. 50+803.93 TO STA. 50+900

DATE 12/20/00

DRAWN BY VAP  
 CHECKED BY JRP

X:\PROJECTS\132646\PROFILES\50-803.93-50-900.dwg  
 04/09/2002 22:56