

F.A. RTE.	SECTION	COUNTY	TOTAL SHEETS	SHEET NO.
351	2008-001VB	COOK	579	157
STA. 2+700		TO STA. 3+250		
FED. ROAD DIST. NO.		ILLINOIS FED. AID PROJECT		

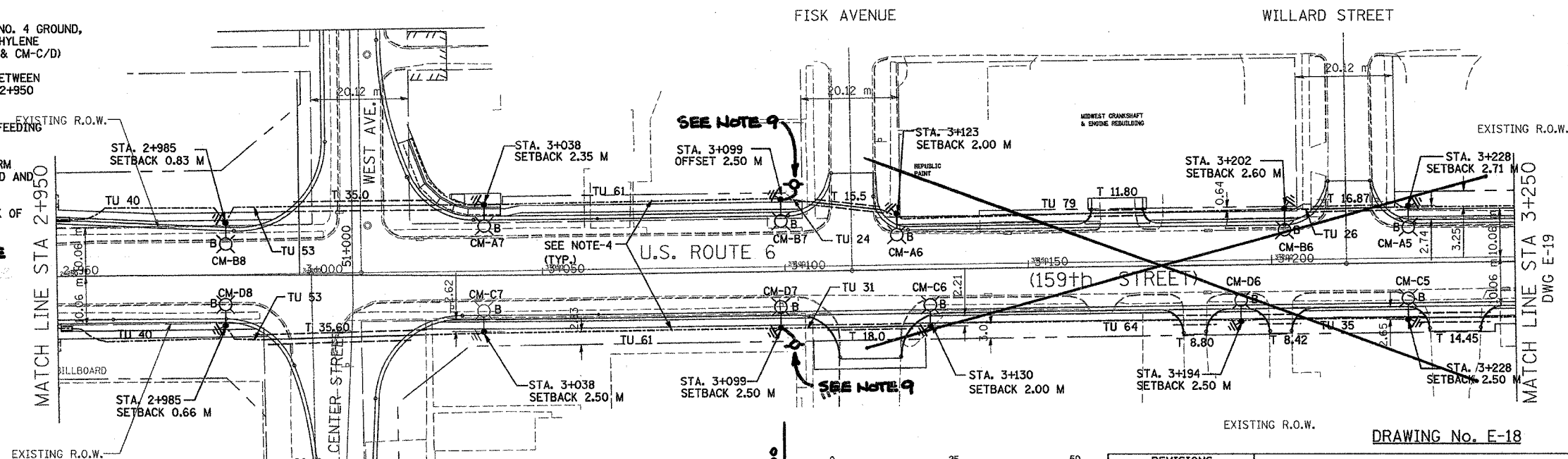
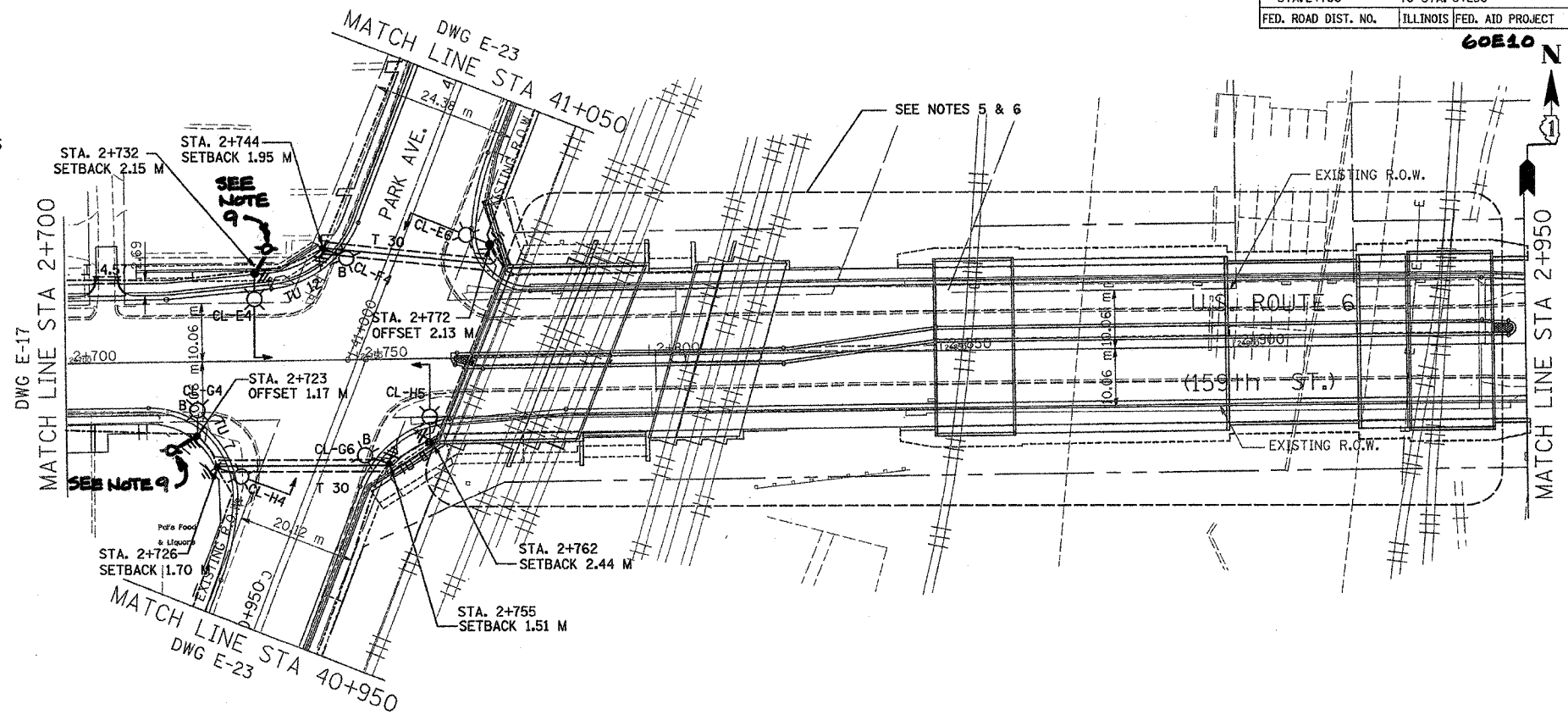
60E10

**LEGEND**

- P XX GALVANIZED STEEL CONDUIT PUSHED (P) UNDER DRIVEWAYS/PAVEMENT 65MM, XX DENOTES LENGTH IN METERS.
- CH-AX PROPOSED ALUMINUM LIGHT POLE (14.5 M M.H., 2.5M MAST ARM), FOUNDATION & 310W HPS LUMINAIRE. 'CH' DENOTES CONTROLLER NO. 'A' DENOTES CIRCUIT NUMBER. 'X' DENOTES POLE NO. 'B' DENOTES BREAKAWAY DEVICE AT THE POLE BASE.
- UNDER GROUND SERVICE 50mm GALVANIZED STEEL
- EXISTING CONTROLLER TO BE REMOVED AT COMPLETION OF PROJECT
- PROPOSED CONTROLLER
- GALVANIZED STEEL
- TU XX TU DENOTES UNIT DUCT IN TRENCH, SIZES AS NOTED ON PLANS, XX-DENOTES LENGTH IN METERS.
- GROUND ROD, 16MM DIA, X 3.0M LONG
- T XX GALVANIZED STEEL CONDUIT IN TRENCH (T) UNDER DRIVEWAYS/PAVEMENT 65MM, XX DENOTES LENGTH IN METERS.
- TEMPORARY WOOD POLE (SEE DETAIL SHEET 174)**
- GROUND FIELD FOR CONTROLLERS. 2/0 AWG BARE COPPER WIRE
- STEEL COMBINATION MAST ARM ASSEMBLY AND POLE (BY TRAFFIC SIGNAL CONTRACTOR, SEE NOTE-6)

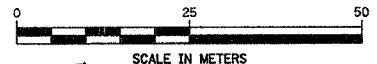
**NOTES:**

1. ALL DIMENSIONS ARE IN METERS.
2. REFER TO LIGHTING NOTES ON DRAWING E-1.
3. UNIT DUCT, WITH 3-1/C NO. 6 AND 1-1/C NO. 6 GROUND, 600V (EPR-TYPE RHW), 25MM DIA., POLYETHYLENE UNLESS OTHERWISE NOTED.
4. UNIT DUCT, WITH 3-1/C NO. 2 AND 1-1/C NO. 4 GROUND, 600V (EPR-TYPE RHW), 40MM DIA., POLYETHYLENE UNLESS OTHERWISE NOTED. (CKT CM-A/B & CM-C/D)
5. FOR UNDERPASS AND ROADWAY LIGHTING BETWEEN EAST END OF PARK AVENUE AND STATION 2+950 SEE DWGS E-11 & E-12.
6. FOR LOCATION OF MAIN JUNCTION BOXES FEEDING UNDERPASS LIGHTS, SEE DWG. E-12.
7. LUMINAIRE ON THE COMBINATION MAST ARM ASSEMBLY SHALL BE FURNISHED, INSTALLED AND WIRED BY THE LIGHTING CONTRACTOR.
8. POLES SETBACK ARE MEASURED FROM BACK OF THE CURB.
9. **CONNECT POWER FROM BASE OF PERMANENT POLE TO TEMPORARY WOOD POLE - SEE TEMPORARY LIGHTING PLANS, AND DETAIL ON SHEET 174.**



**END PROPOSED LIGHTING IMPROVEMENTS STA. 3+100 CONTRACT 60E10**

**PROPOSED IMPROVEMENTS IN CONTRACT 60714**



REVISIONS	
NAME	DATE
LIRS CORP	2/11/08

ILLINOIS DEPARTMENT OF TRANSPORTATION  
 US RTE 6 FROM I-294 TO IL RTE 1  
 PROPOSED LIGHTING PLAN  
 AND POLES LOCATIONS  
 FROM STA. 2+700 TO STA. 3+250  
 SCALE AS NOTED  
 DATE 12/12/07  
 DRAWN BY S.S./W.S.  
 CHECKED BY C.K./H.S.

Delta Engineering, Inc.  
 CONSULTING ENGINEERS, CHICAGO, ILLINOIS.