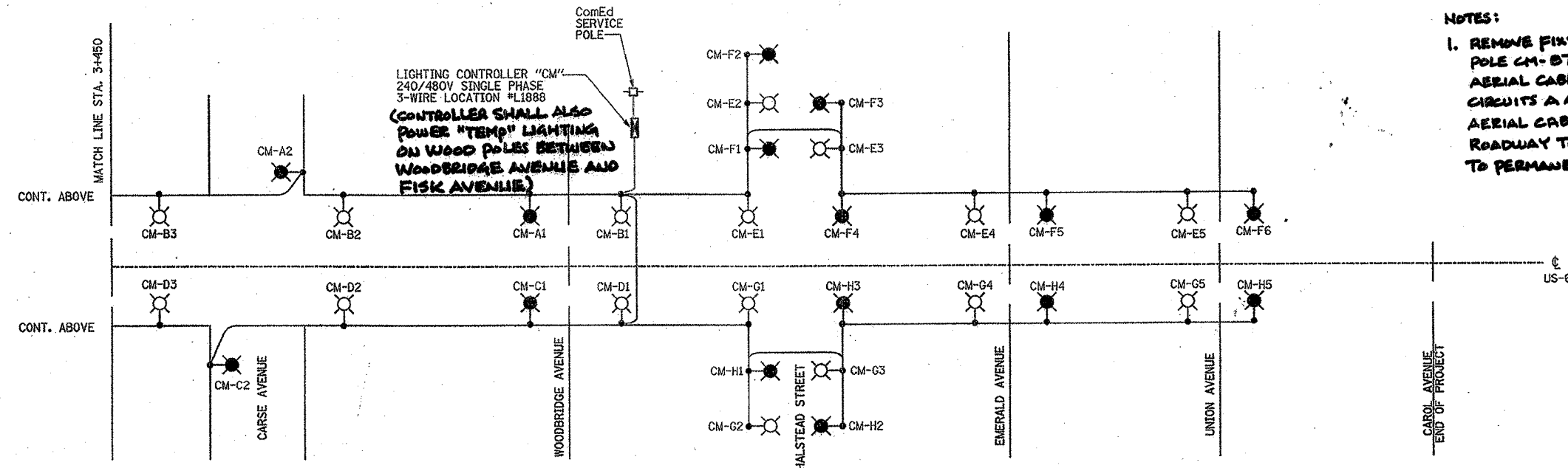
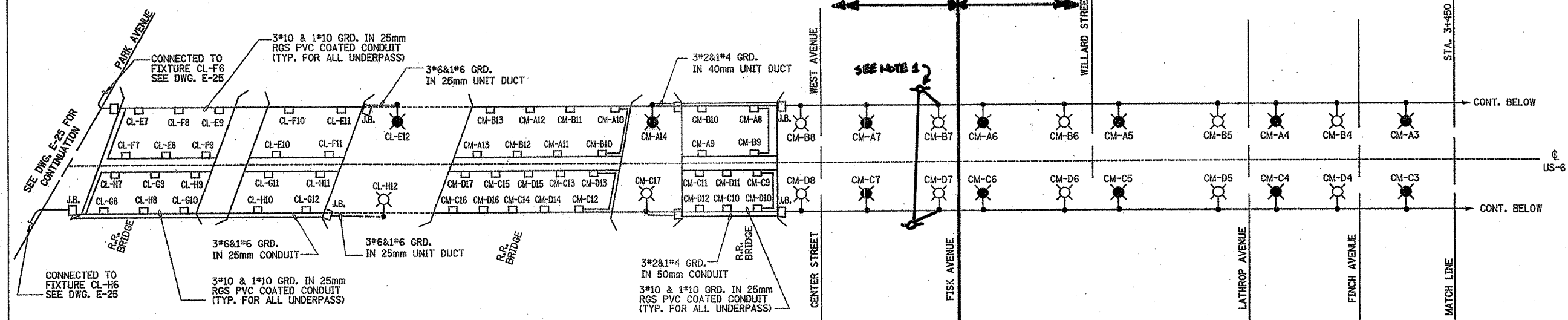


F.A. RTE.	SECTION	COUNTY	TOTAL SHEETS	SHEET NO.
351	2008-001VB	COOK	579	160
STA.	TO STA.			
FED. ROAD DIST. NO.	ILLINOIS	FED. AID PROJECT		

**END PROPOSED IMPROVEMENTS
TO PERMANENT LIGHTING SYSTEM
CONTRACT 60E10**

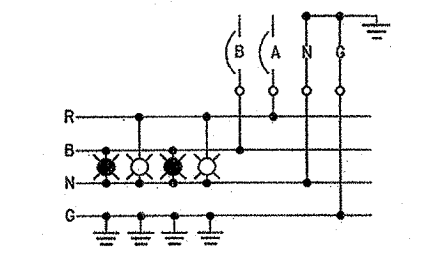
**PROPOSED IMPROVEMENTS
UNDER CONTRACT 60T14**



NOTES:
1. REMOVE FIXTURE FROM TEMPORARY POLE CM-B7 AND CONNECT TEMPORARY AERIAL CABLE CIRCUIT A/B TO PERMANENT CIRCUITS A AND B. ROUTE TEMPORARY AERIAL CABLE CIRCUIT C/D ACROSS ROADWAY TO WOOD POLE AND CONNECT TO PERMANENT CIRCUITS C AND D.

LOAD TABULATION FOR LIGHTING CONTROLLER "CM"

CIRCUIT	LAMP LOAD	TOTAL LOAD	AMPS
A (240V)	8 @ 310 W HPS 6 @ 70 W HPS	3238	13.50
B (240V)	8 @ 310 W HPS 6 @ 70 W HPS	3238	13.50
C (240V)	8 @ 310 W HPS 8 @ 70 W HPS	3408	14.20
D (240V)	8 @ 310 W HPS 8 @ 70 W HPS	3408	14.20
E (240V)	5 @ 310 W HPS	1705	7.10
F (240V)	6 @ 310 W HPS	2046	8.53
G (240V)	5 @ 310 W HPS	1705	7.10
H (240V)	5 @ 310 W HPS	1705	7.10
(480V)	TOTAL VA	20453	42.61



LUMINAIRE WIRING DETAIL (TYPICAL)

- LEGEND:**
- ⊗ 310 HPS M-C 111 LUMINAIRE ON RED CABLE
 - ⊗ 310 HPS M-C 111 LUMINAIRE ON BLACK CABLE
 - ⊞ PROPOSED LIGHTING CONTROLLER
 - ⊞ ComEd SERVICE POLE
 - ⊞ TEMPORARY WOOD POLE

REVISIONS	
NAME	DATE
URS CORP	2/15/08

DRAWING No. E-26
ILLINOIS DEPARTMENT OF TRANSPORTATION
US RTE 6 FROM I-294 TO IL RTE 1
SINGLE LINE DIAGRAM
PROPOSED LIGHTING
SHEET '2' OF '2'
SCALE AS NOTED
DATE 12/12/07
DRAWN BY S.S./W.S.
CHECKED BY C.K./H.S.

Delta Engineering, Inc.
CONSULTING ENGINEERS, CHICAGO ILLINOIS