

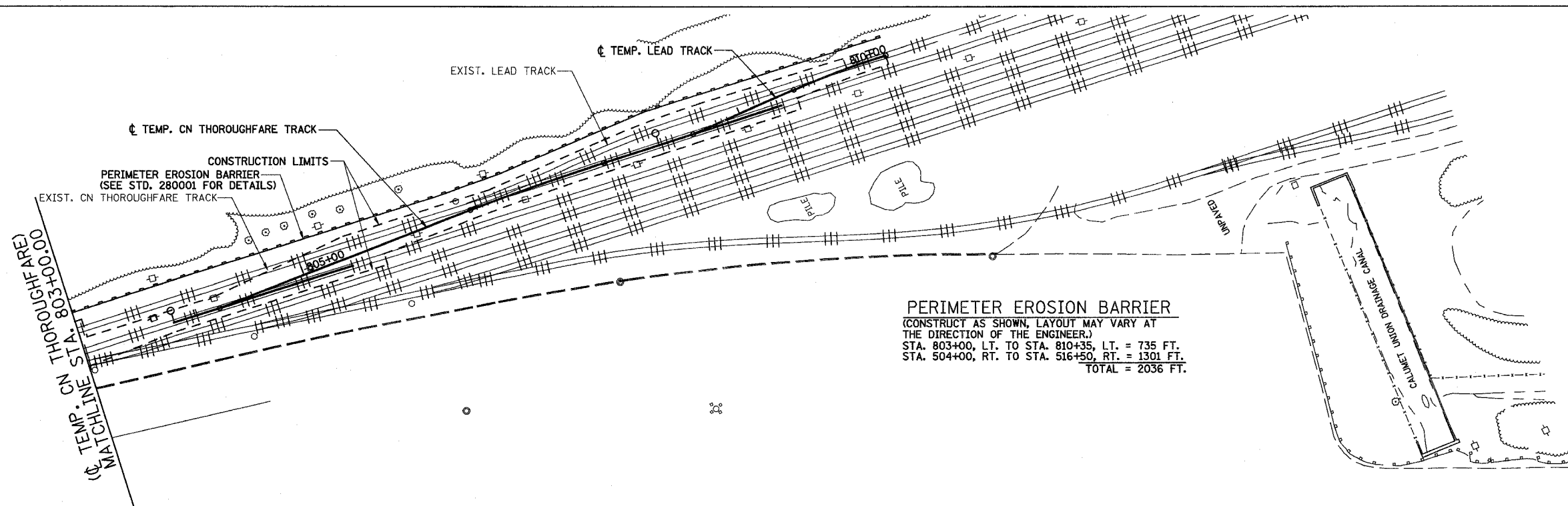
ROUTE NO.	SECTION	COUNTY	TOTAL SHEETS	SHEET NO
F.A.P. 351	2008-001VB	COOK	579	184
STA.	TO STA.		FED. AID PROJECT	
FED. ROAD DIST. NO. 7	ILLINOIS		CONTRACT NO. 60E10	

**LEGEND**

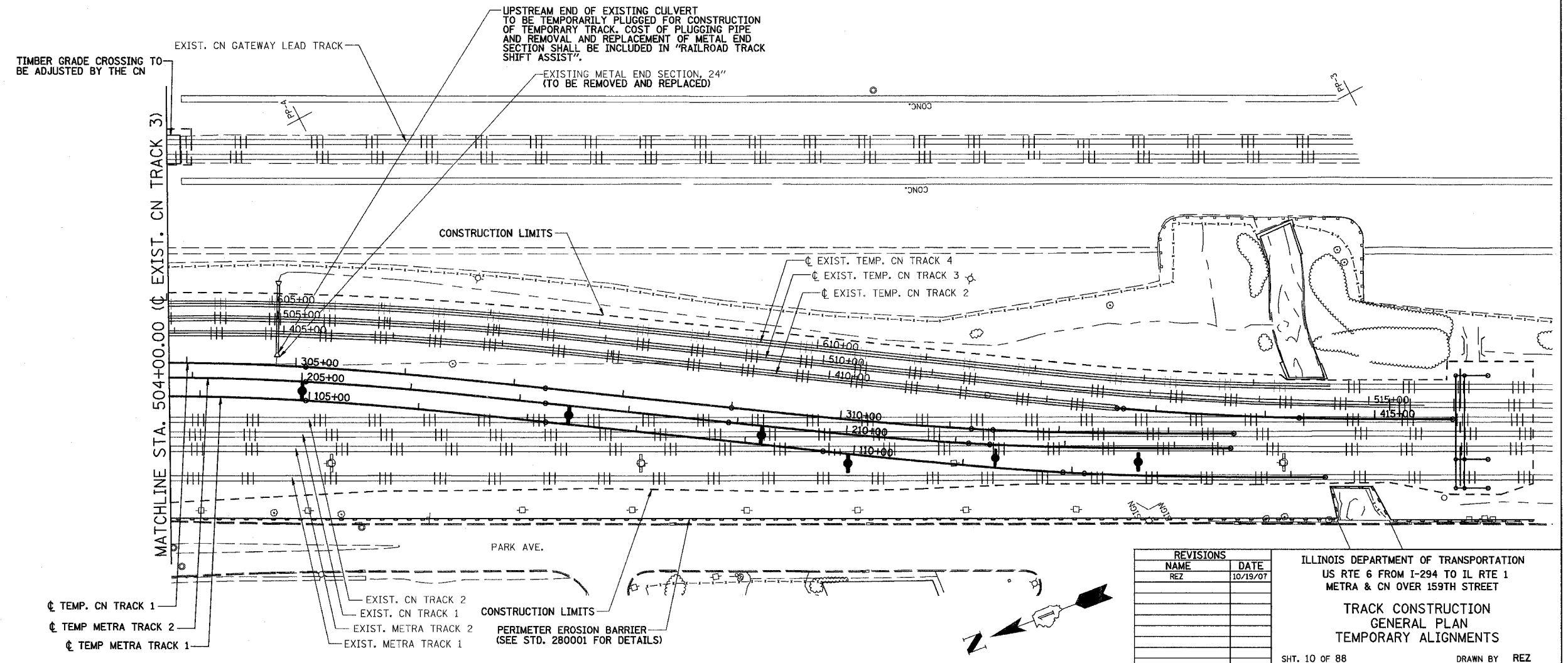
- PROPOSED TRACK
- ||— EXISTING TRACK
- - - PERIMETER EROSION BARRIER

3/13/2008 2:09:33 PM

q:\17049\069\Track & Rail Main Contract\FINAL PLANS\plan\_temp\_2.dgn



**PERIMETER EROSION BARRIER**  
 (CONSTRUCT AS SHOWN, LAYOUT MAY VARY AT THE DIRECTION OF THE ENGINEER.)  
 STA. 803+00, LT. TO STA. 810+35, LT. = 735 FT.  
 STA. 504+00, RT. TO STA. 516+50, RT. = 1301 FT.  
 TOTAL = 2036 FT.



UPSTREAM END OF EXISTING CULVERT TO BE TEMPORARILY PLUGGED FOR CONSTRUCTION OF TEMPORARY TRACK. COST OF PLUGGING PIPE AND REMOVAL AND REPLACEMENT OF METAL END SECTION SHALL BE INCLUDED IN "RAILROAD TRACK SHIFT ASSIST".

EXISTING METAL END SECTION, 24" (TO BE REMOVED AND REPLACED)

REVISIONS	
NAME	DATE
REZ	10/19/07

ILLINOIS DEPARTMENT OF TRANSPORTATION  
 US RTE 6 FROM I-294 TO IL RTE 1  
 METRA & CN OVER 159TH STREET

**TRACK CONSTRUCTION  
 GENERAL PLAN  
 TEMPORARY ALIGNMENTS**

SHT. 10 OF 88  
 DATE 2/21/2008

DRAWN BY REZ  
 CHECKED BY RMS