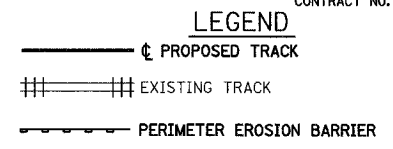
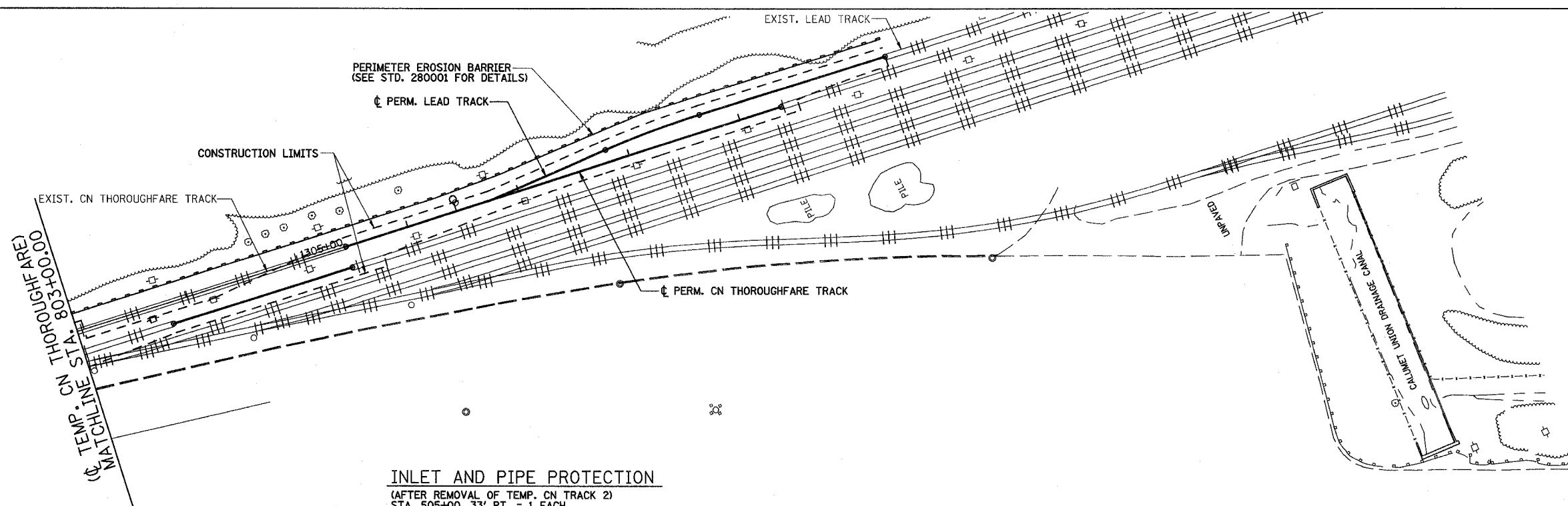


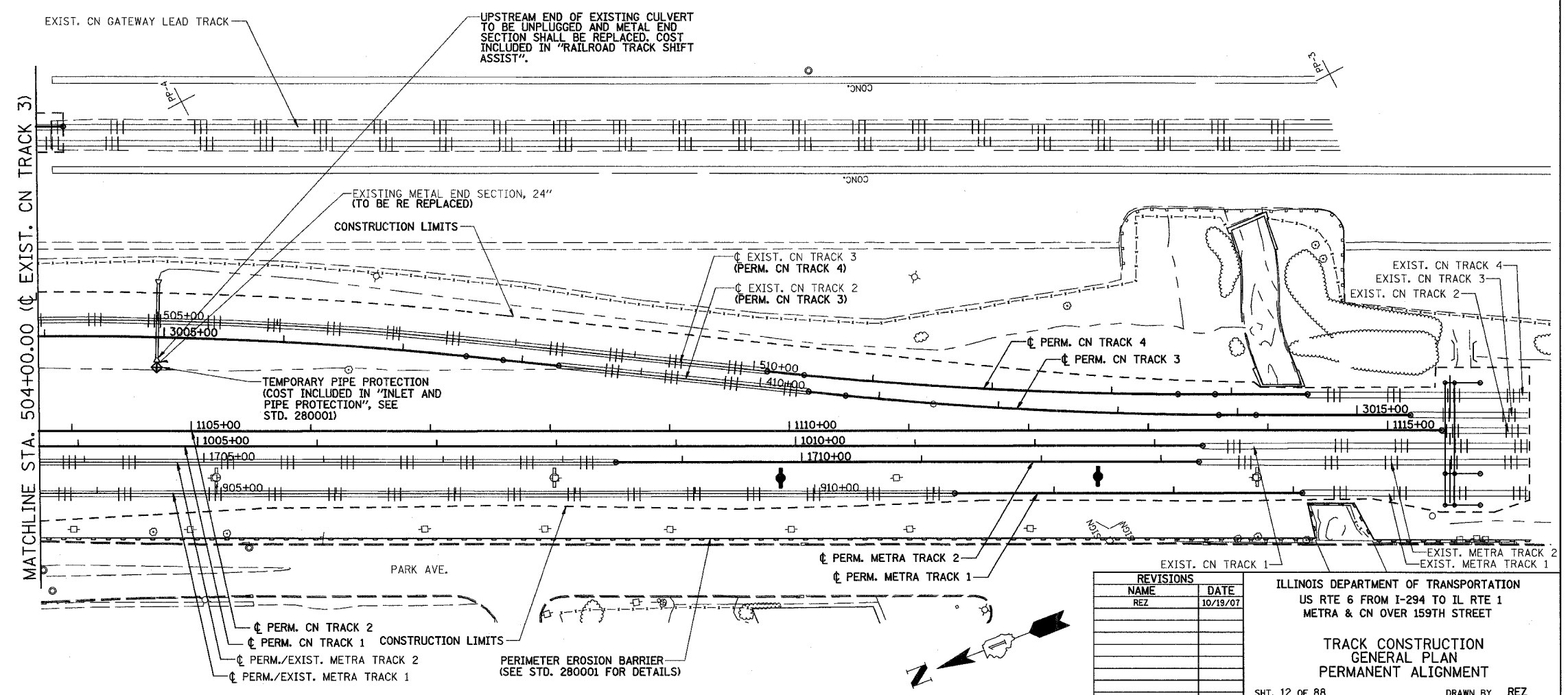
ROUTE NO.	SECTION	COUNTY	TOTAL SHEETS	SHEET NO.
F.A.P. 351	2008-001VB	COOK	579	186
STA.	TO STA.		FED. AID PROJECT	
FED. ROAD DIST. NO. 7	ILLINOIS		CONTRACT NO. 60E10	



3/13/2008 2:09:34 PM



INLET AND PIPE PROTECTION
(AFTER REMOVAL OF TEMP. CN TRACK 2)
STA. 505+00, 33' RT. = 1 EACH



REVISIONS	
NAME	DATE
REZ	10/19/07

ILLINOIS DEPARTMENT OF TRANSPORTATION
US RTE 6 FROM I-294 TO IL RTE 1
METRA & CN OVER 159TH STREET

**TRACK CONSTRUCTION
GENERAL PLAN
PERMANENT ALIGNMENT**

SHT. 12 OF 88
DATE 2/21/2008

DRAWN BY REZ
CHECKED BY RMS

q:\17049\069\Track & Rail Main Contract\FINAL PLANS\plan-perm-2.dgn