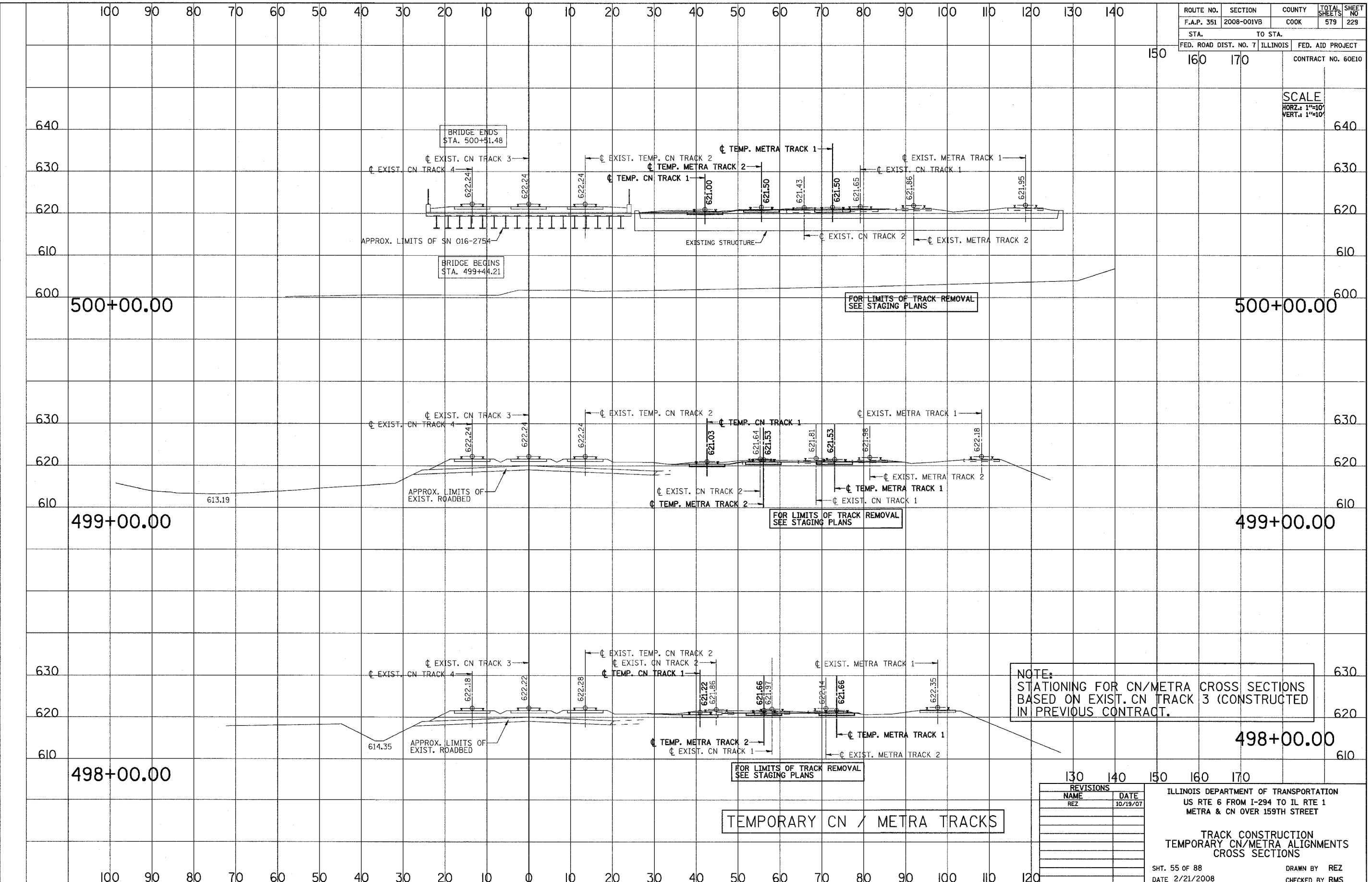


3/13/2008 2:09:54 PM

q:\17049_069\Track & Rail Main Contract\FINAL PLANS\lay-metra.tdgn

ROUTE NO.	SECTION	COUNTY	TOTAL SHEETS	SHEET NO.
F.A.P. 351	2008-001VB	COOK	579	229
STA.	TO STA.		ILLINOIS	
FED. ROAD DIST. NO. 7	FED. AID PROJECT		CONTRACT NO. 60E10	

SCALE
 HORZ.: 1"=10'
 VERT.: 1"=10'



NOTE:
 STATIONING FOR CN/METRA CROSS SECTIONS
 BASED ON EXIST. CN TRACK 3 (CONSTRUCTED
 IN PREVIOUS CONTRACT.)

TEMPORARY CN / METRA TRACKS

REVISIONS	
NAME	DATE
REZ	10/19/07

ILLINOIS DEPARTMENT OF TRANSPORTATION
 US RTE 6 FROM I-294 TO IL RTE 1
 METRA & CN OVER 159TH STREET

TRACK CONSTRUCTION
 TEMPORARY CN/METRA ALIGNMENTS
 CROSS SECTIONS

SHT. 55 OF 88
 DATE 2/21/2008

DRAWN BY REZ
 CHECKED BY RMS