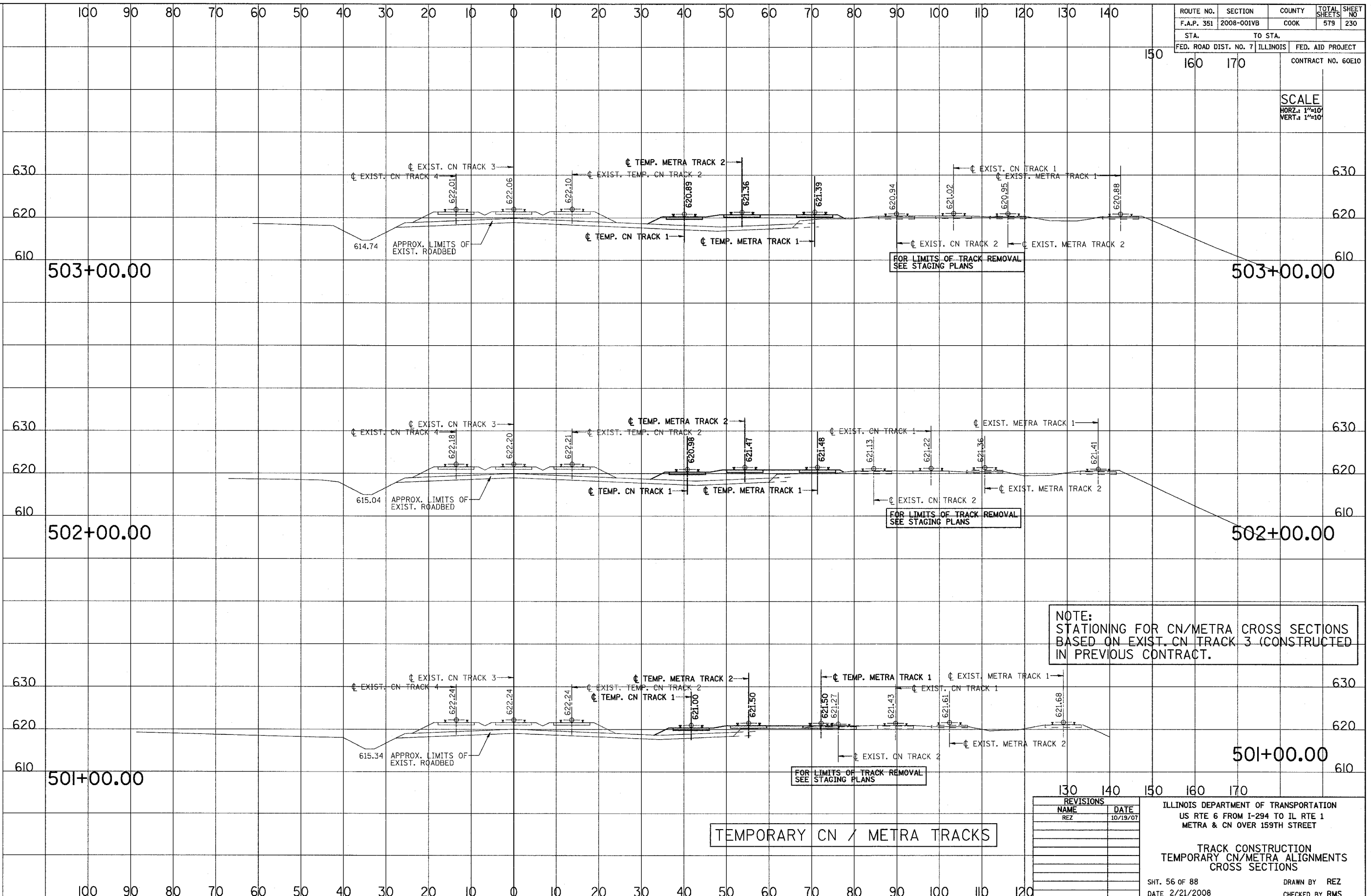


3/13/2008 2:09:55 PM

q:\17049\069\Track & Rail Main Contract\FINAL PLANS\lay-metra-.tdgn

ROUTE NO.	SECTION	COUNTY	TOTAL SHEETS	SHEET NO
F.A.P. 351	2008-001VB	COOK	579	230
STA.		TO STA.		
150		160 170		
FED. ROAD DIST. NO. 7		ILLINOIS		FED. AID PROJECT
		CONTRACT NO. 60E10		

SCALE
 HORZ.: 1"=10'
 VERT.: 1"=10'



NOTE:
 STATIONING FOR CN/METRA CROSS SECTIONS
 BASED ON EXIST. CN TRACK 3 (CONSTRUCTED
 IN PREVIOUS CONTRACT.)

TEMPORARY CN / METRA TRACKS

REVISIONS	
NAME	DATE
REZ	10/19/07

ILLINOIS DEPARTMENT OF TRANSPORTATION
 US RTE 6 FROM I-294 TO IL RTE 1
 METRA & CN OVER 159TH STREET

TRACK CONSTRUCTION
 TEMPORARY CN/METRA ALIGNMENTS
 CROSS SECTIONS

SHT. 56 OF 88
 DATE 2/21/2008

DRAWN BY REZ
 CHECKED BY RMS