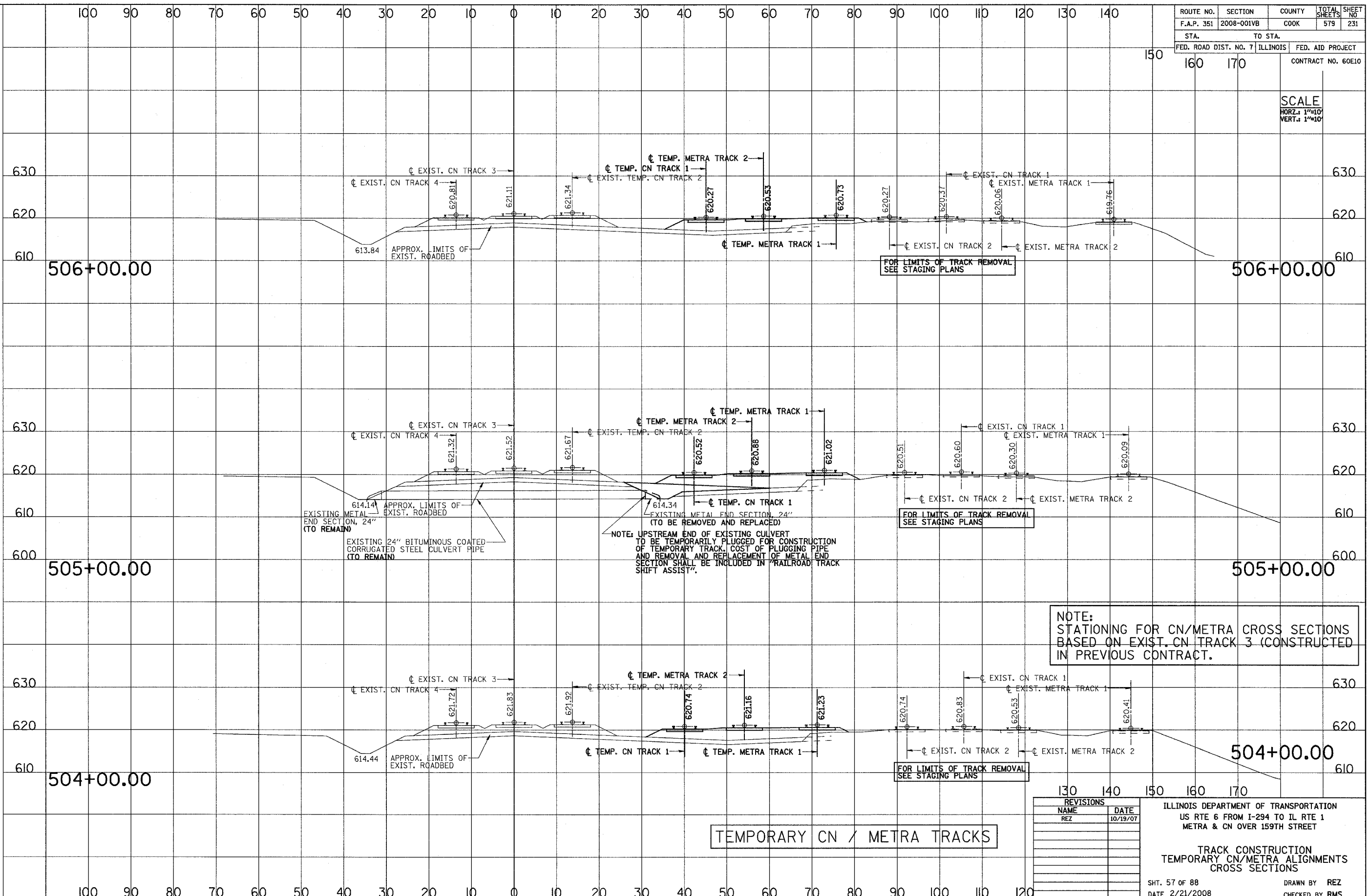


3/13/2008 2:09:54 PM

q:\17249\069\Track & Rail Main Contract\FINAL PLANS\lay-metra.t.dgn

ROUTE NO.	SECTION	COUNTY	TOTAL SHEETS	SHEET NO.
F.A.P. 351	2008-001VB	COOK	579	231
STA. 150		TO STA. 160		CONTRACT NO. 60E10
FED. ROAD DIST. NO. 7 ILLINOIS FED. AID PROJECT				

SCALE  
 HORZ.: 1"=10'  
 VERT.: 1"=10'



NOTE:  
 STATIONING FOR CN/METRA CROSS SECTIONS  
 BASED ON EXIST. CN TRACK 3 (CONSTRUCTED  
 IN PREVIOUS CONTRACT.

TEMPORARY CN / METRA TRACKS

REVISIONS	
NAME	DATE
REZ	10/19/07

ILLINOIS DEPARTMENT OF TRANSPORTATION  
 US RTE 6 FROM I-294 TO IL RTE 1  
 METRA & CN OVER 159TH STREET

TRACK CONSTRUCTION  
 TEMPORARY CN/METRA ALIGNMENTS  
 CROSS SECTIONS

SHT. 57 OF 88  
 DATE 2/21/2008

DRAWN BY REZ  
 CHECKED BY RMS