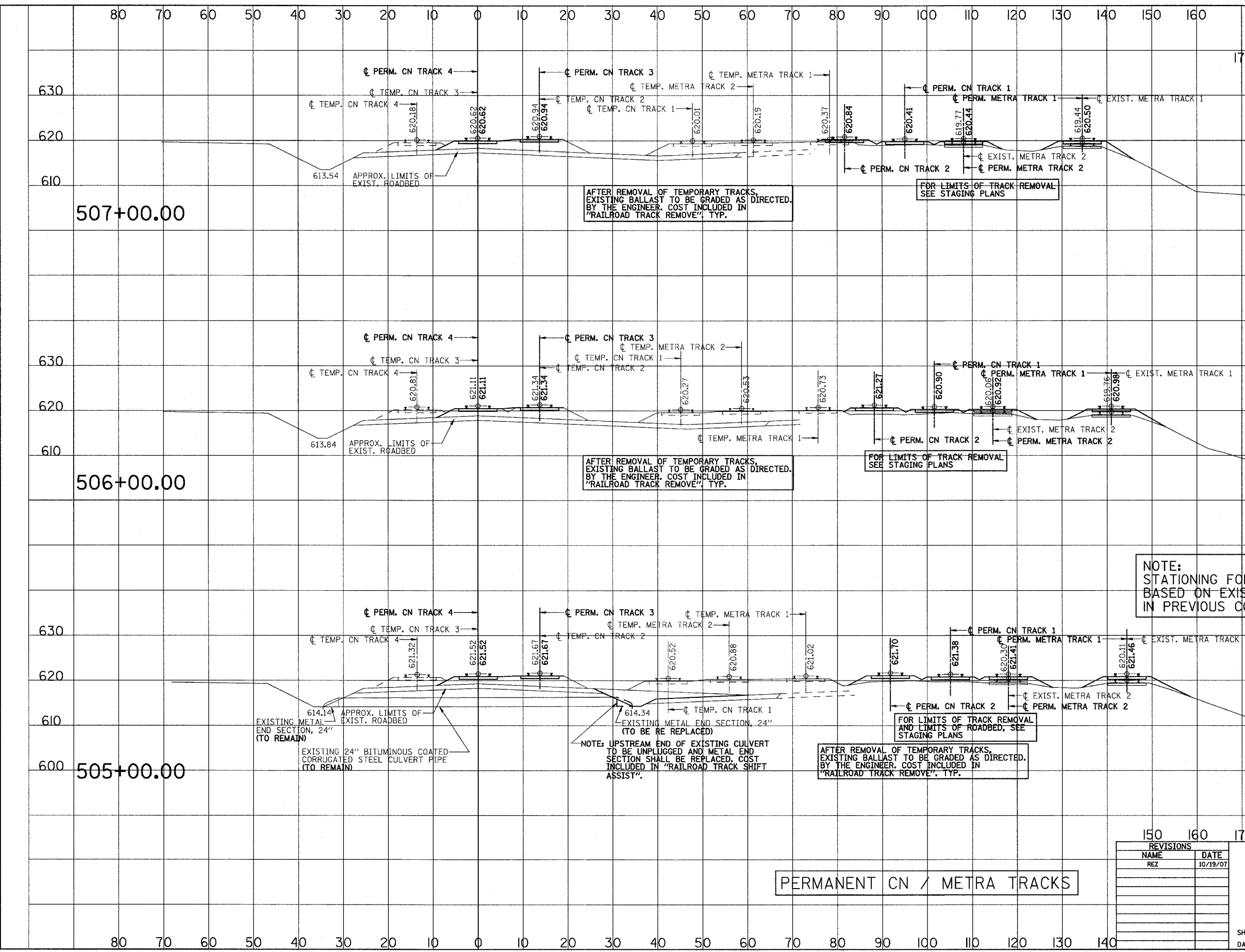


3/13/2008 2:09:58 PM

q:\17049\059\Track & Rail Main Contract\FINAL PLANS\leg_metra_a.f.dgn

ROUTE NO.	SECTION	COUNTY	TOTAL SHEETS	SHEET NO.
F.A.P. 351	2008-001VB	COOK	579	241
STA. TO STA.		FED. ROAD DIST. NO. 7 ILLINOIS FED. AID PROJECT		
170 180 190		CONTRACT NO. 60E10		



SCALE
 HORZ.: 1"=10'
 VERT.: 1"=10'

NOTE:
 STATIONING FOR CN/METRA CROSS SECTIONS
 BASED ON EXIST. CN TRACK 3 (CONSTRUCTED
 IN PREVIOUS CONTRACT.

614.14 APPROX. LIMITS OF
 EXISTING METAL END SECTION, 24"
 (TO REMAIN)
 EXISTING 24" BITUMINOUS COATED
 CORRUGATED STEEL CULVERT PIPE
 (TO REMAIN)

NOTE: UPSTREAM END OF EXISTING CULVERT
 TO BE UNPLUGGED AND METAL END
 SECTION SHALL BE REPLACED. COST
 INCLUDED IN "RAILROAD TRACK SHIFT
 ASSIST".

AFTER REMOVAL OF TEMPORARY TRACKS,
 EXISTING BALLAST TO BE GRADED AS DIRECTED.
 BY THE ENGINEER. COST INCLUDED IN
 "RAILROAD TRACK REMOVE", TYP.

FOR LIMITS OF TRACK REMOVAL
 AND LIMITS OF ROADBED, SEE
 STAGING PLANS

PERMANENT CN / METRA TRACKS

REVISIONS	
NAME	DATE
REZ	10/19/07

ILLINOIS DEPARTMENT OF TRANSPORTATION
 US RTE 6 FROM I-294 TO IL RTE 1
 METRA & CN OVER 159TH STREET

TRACK CONSTRUCTION
 PERMANENT CN/METRA ALIGNMENTS
 CROSS SECTIONS

SHT. 67 OF 88
 DATE 2/21/2008

DRAWN BY REZ
 CHECKED BY RMS