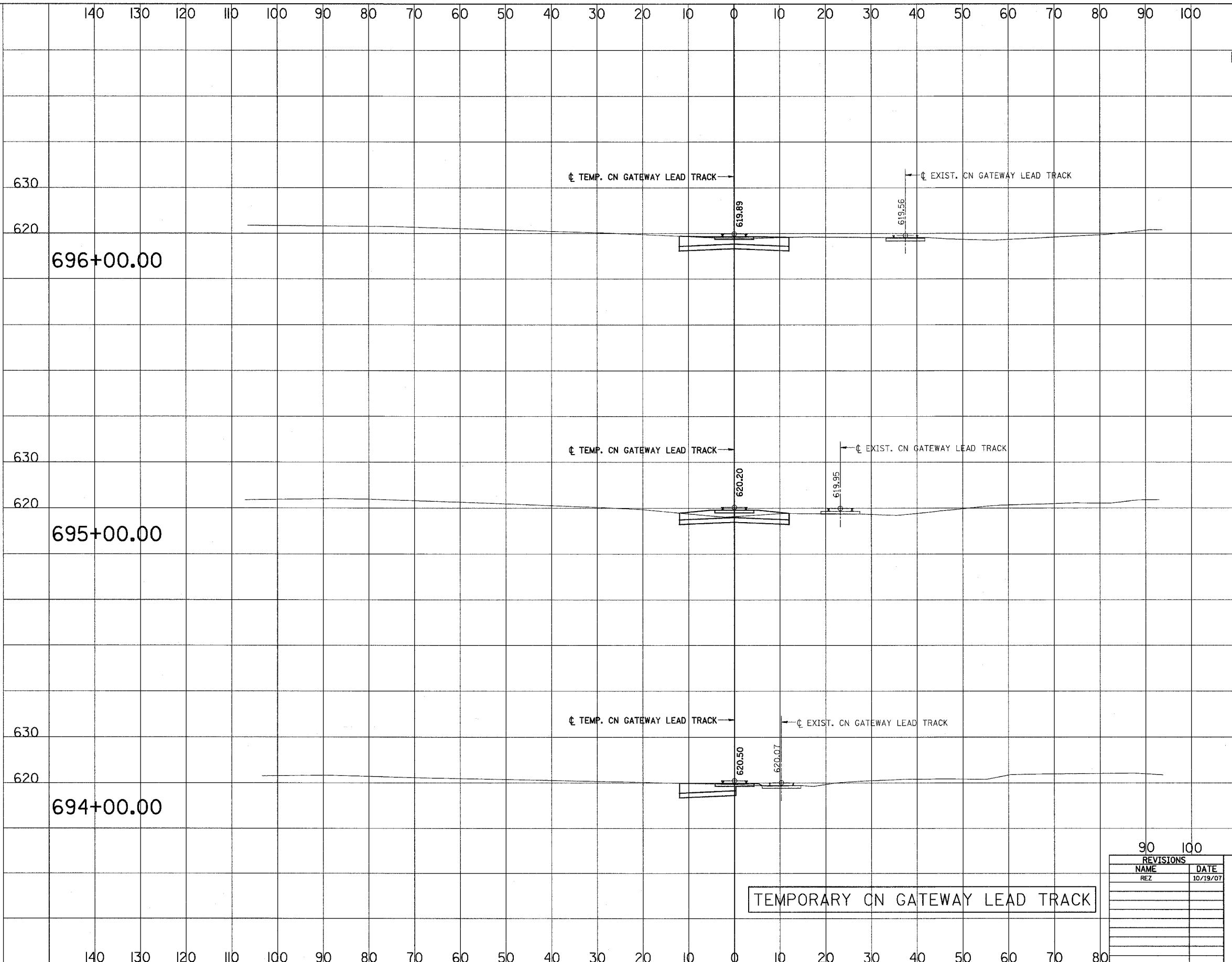


3/13/2008 2:09:59 PM

q:\17049\069\Track & Rail Main Contract\FINAL PLANS\leg\_gway\_.tdgn

ROUTE NO.	SECTION	COUNTY	TOTAL SHEETS	SHEET NO.
F.A.P. 351	2008-001VB	COOK	579	246
STA.		TO STA.		
110		120 130		
FED. ROAD DIST. NO. 7		ILLINOIS		FED. AID PROJECT
				CONTRACT NO. 60E10

SCALE  
 HORZ.: 1"=10'  
 VERT.: 1"=10'



696+00.00

696+00.00

C = 67 F = 0

695+00.00

695+00.00

C = 46 F = 0

694+00.00

694+00.00

C = 53 F = 0

TEMPORARY CN GATEWAY LEAD TRACK

REVISIONS	
NAME	DATE
REZ	10/19/07

ILLINOIS DEPARTMENT OF TRANSPORTATION  
 US RTE 6 FROM I-294 TO IL RTE 1  
 METRA & CN OVER 159TH STREET

TRACK CONSTRUCTION  
 TEMPORARY CN GATEWAY LEAD TRACK  
 CROSS SECTIONS

SHT. 72 OF 88  
 DATE 2/21/2008

DRAWN BY REZ  
 CHECKED BY RMS