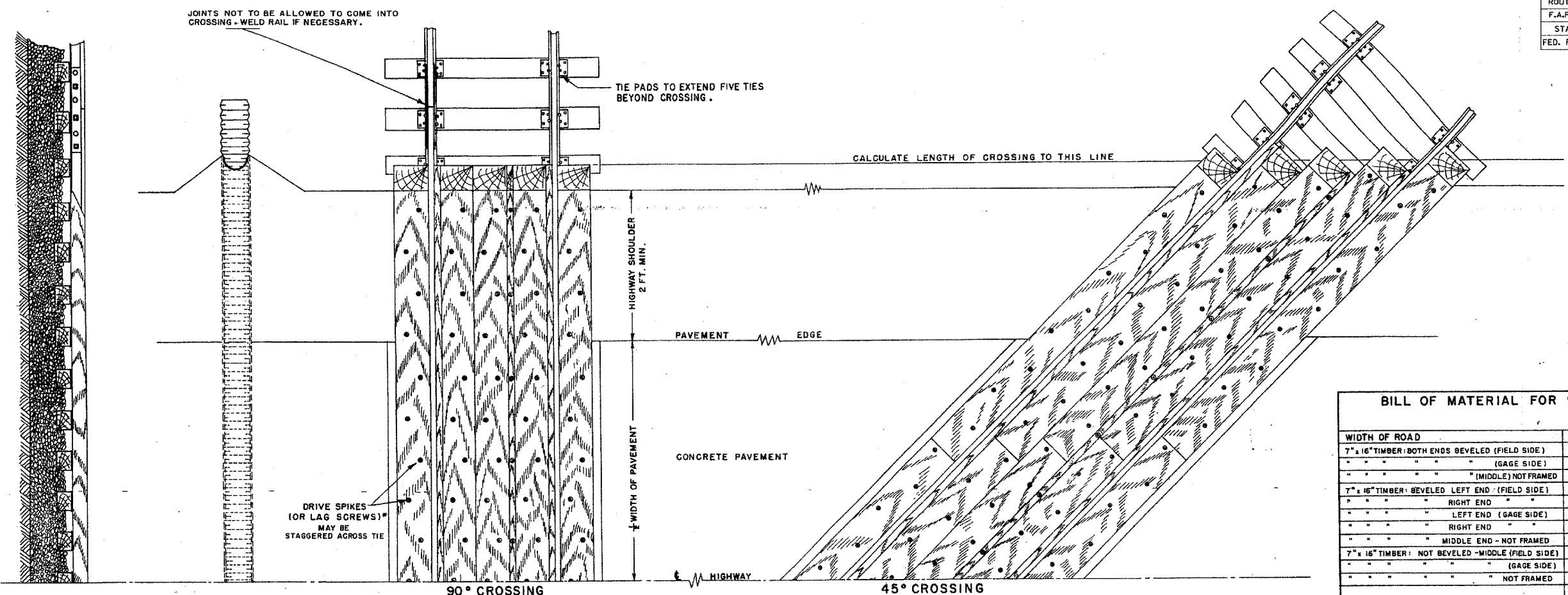


3/13/2008 2:10:04 PM  
q:\17049\069\Track & Rail Main Contract\FINAL PLANS\88-timber\_road\_xing.dgn

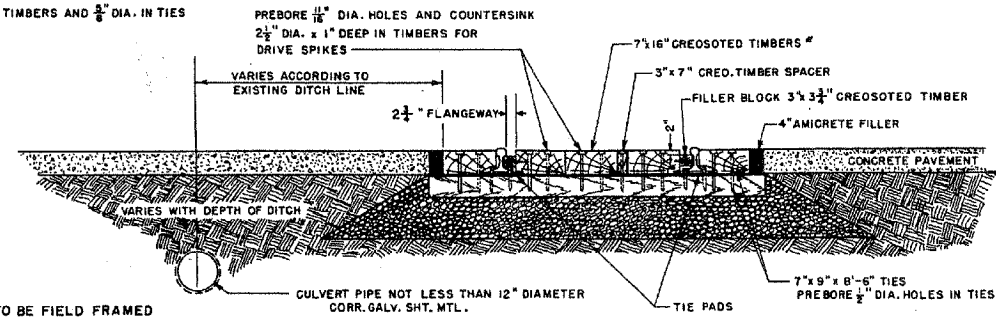


**BILL OF MATERIAL FOR 90° CROSSING**

WIDTH OF ROAD	SECTION OF RAIL			
	11228-11525	13128-13225	13128-13225	13128-13225
7" x 16" TIMBER: BOTH ENDS BEVELED (FIELD SIDE)	2		2	
" " " " (GAGE SIDE)	2		2	
" " " " (MIDDLE) NOT FRAMED	1		1	
7" x 16" TIMBER: BEVELED LEFT END (FIELD SIDE)	2	2	2	2
" " " " RIGHT END	2	2	2	2
" " " " LEFT END (GAGE SIDE)	2	2	2	2
" " " " RIGHT END	2	2	2	2
" " " " MIDDLE END - NOT FRAMED	2	2	2	2
7" x 16" TIMBER: NOT BEVELED - MIDDLE (FIELD SIDE)		2		2
" " " " (GAGE SIDE)		2		2
" " " " NOT FRAMED		1		1
3" x 7" TIMBER (SPACER) (LIN. FT.)	16	24	32	40
3" x 3 1/2" FLANGWAY FILLER BLOCK (LIN. FT.)	32	48	64	80
DRIVE SPIKES (OR LAG SCREWS) (EA.)	55	80	105	130
TIES 7" x 9" x 8'-6" (EA.)	11	16	21	26
TIE PLATES & PADS	13	22	32	42
" " PADS	42	52	62	72
14" PLATES			22	32
" " PADS			42	52
SPIKES, STD. TRACK (EA.)	44	54	64	74
SHIM: 1/2" x 9" BOARD (1/2" IN. PAD) (LIN. FT.)	70	102	133	165
1 1/2" x 9" "			68	99
AMICRETE FILLER* (CU. YD.)	.25	.30	.50	.60
CULVERT PIPE (ADD FOR SLOPES) (FT.)	18	26	34	42
ALTERNATE AMICRETE RAIL FILLER (CU. YD.)	.70	.90	1.5	2.0

NOTE: FOR 9020 RAIL AND UNDER-USE 6" x 16" TIMBERS WITHOUT SHIMS.

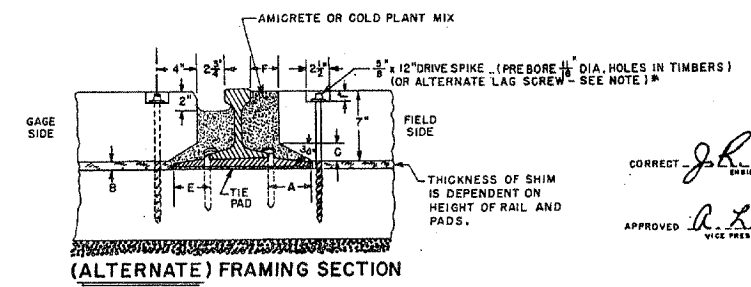
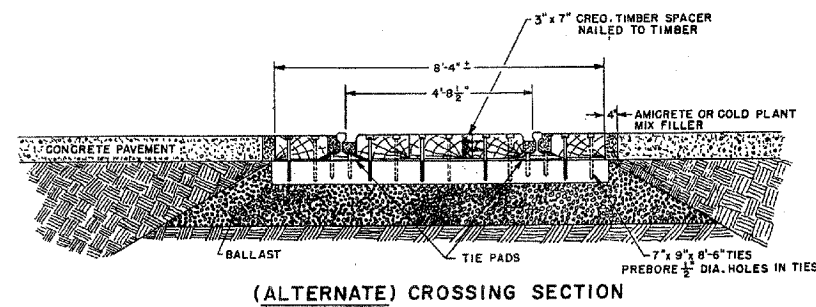
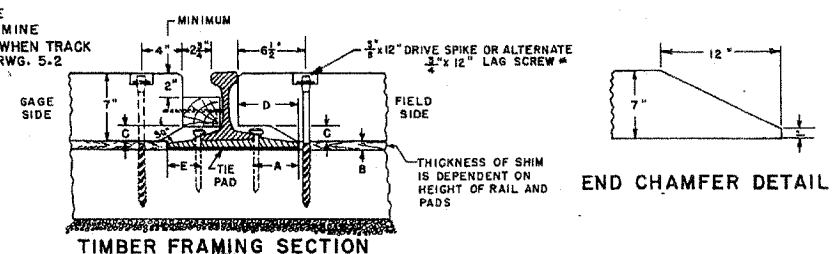
\* WHEN 3/4" x 12" LAG SCREW IS USED AS AN ALTERNATE: PREBORE 1/2" DIA. HOLES IN TIMBERS AND 3/8" DIA. IN TIES



NOTE: ALL TIMBERS TO BE FIELD FRAMED AND BORED. SWAB HOLES AND CUT ENDS WITH CREOSOTE.

A SEPARATE INVESTIGATION WILL BE MADE AT EACH CROSSING TO DETERMINE PROPER DRAINAGE REQUIREMENTS. WHEN TRACK DRAINAGE IS NECESSARY - REFER TO DRWG. 5-2

RAIL	112-115 #	131-132 #
A	4 1/2"	4 1/2"
B	8"	1 1/2"
C	1 1/2"	1 1/2"
D	5 1/2"	6"
E	3 1/2"	3 1/2"
F	3"	2 1/2"



CORRECT: *J.H. Miller*  
ENGINEER, ILL. ST. R.R.

APPROVED: *D.L. Barnes*  
VICE PRES. & CHIEF ENGINEER

**ILLINOIS CENTRAL GULF RAILROAD**  
**STANDARD**  
**SOLID TIMBER ROAD CROSSING**  
**(USING 7" x 16" TIMBERS)**

OFFICE OF VICE PRES. & CHIEF ENGINEER CHICAGO, ILL.  
SCALE: AS NOTED MAY 20, 1970  
REV. FEB. 10, 1971

FILE: D-851 DRWG. 5.17

NOTE: CONTRACTOR SHALL FURNISH TIMBERS AS SHOWN FOR USE BY METRA IN CONSTRUCTING TEMPORARY GRADE CROSSINGS. SEE SPECIAL PROVISION "PROTECTION OF RAILWAY INTEREST", SECTION 4 "CROSSING OF IN-SERVICE TRACKS" FOR DETAILS. NO SEPARATE MEASUREMENT OR PAYMENT WILL BE MADE FOR THIS WORK.

REVISIONS	NAME	DATE

ILLINOIS DEPARTMENT OF TRANSPORTATION  
US RTE 6 FROM I-294 TO IL RTE 1  
METRA & CN OVER 159TH STREET

TRACK CONSTRUCTION  
SOLID TIMBER ROAD CROSSING

SHT. 88 OF 88 DRAWN BY SOI  
DATE 2/21/2008 CHECKED BY MAD