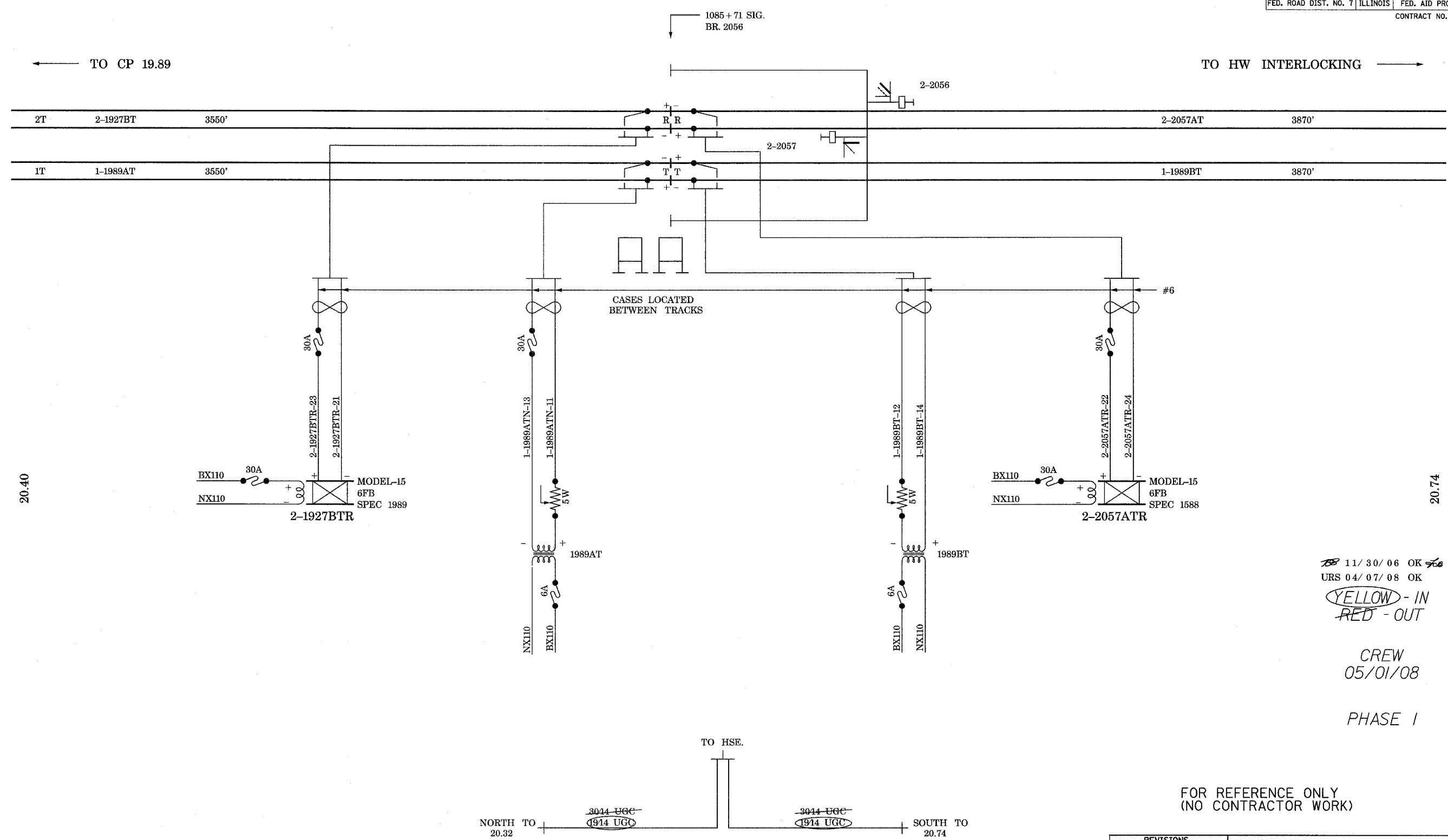


ROUTE NO.	SECTION	COUNTY	TOTAL SHEETS	SHEET NO.
F.A.P. 351	2008-001VB	COOK	579	276
STA.	TO STA.			
FED. ROAD DIST. NO. 7	ILLINOIS	FED. AID PROJECT		
CONTRACT NO. 60E10				

4/14/2008 11:43:53 AM

c:\17049\069\signal work for metra\plans\09_ref.dgn



20.40

20.74

11/30/06 OK
URS 04/07/08 OK

YELLOW - IN
RED - OUT

CREW
05/01/08

PHASE 1

FOR REFERENCE ONLY
(NO CONTRACTOR WORK)

REVISIONS	
NAME	DATE

ILLINOIS DEPARTMENT OF TRANSPORTATION
US RTE 6 FROM I-294 TO IL RTE 1
METRA OVER 159TH STREET

METRA SIGNALS
PHASE 1 (PRESTAGE) CASE 20.56 SH. 1

SHT. SG-09 OF SG-36
DATE 4/11/2008

DRAWN BY AB
CHECKED BY MAD