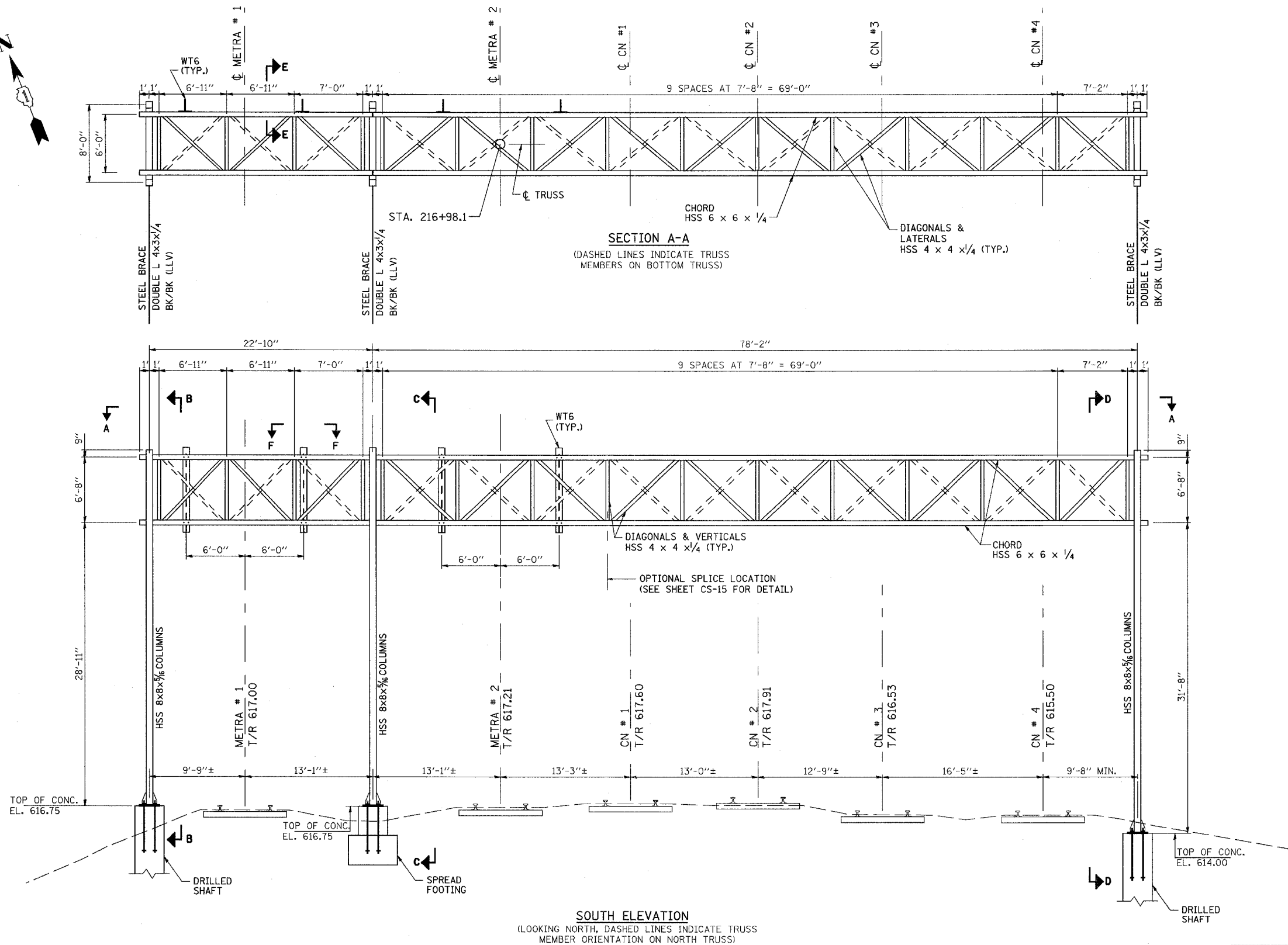


3/13/2008 2:39:17 PM

q:\17049\069\catenary\plans-catstructures\08.s cat.plan&elev.dgn

ROUTE NO.	SECTION	COUNTY	TOTAL SHEETS	SHEET NO
F.A.P. 351	2008-001VB	COOK	579	311
STA.		TO STA.		
FED. ROAD DIST. NO. 7		ILLINOIS		FED. AID PROJECT
CONTRACT NO. 60E10				



SOUTH ELEVATION
(LOOKING NORTH, DASHED LINES INDICATE TRUSS MEMBER ORIENTATION ON NORTH TRUSS)

NOTES:
SEE SHT. CS-09 FOR SECTIONS B-B, C-C, D-D
SEE SHT. CS-15 FOR SECTIONS E-E, F-F

REVISIONS	
NAME	DATE

ILLINOIS DEPARTMENT OF TRANSPORTATION
US RTE 6 FROM I-294 TO IL RTE 1
METRA OVER 159TH ST

**CATENARY STRUCTURES
DEAD-END STRUCTURE
PLAN & ELEVATION**

SHT. CS-08 OF CS-17
DATE 2/21/2008

DRAWN BY SOI
CHECKED BY DEM