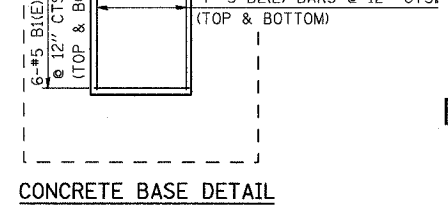
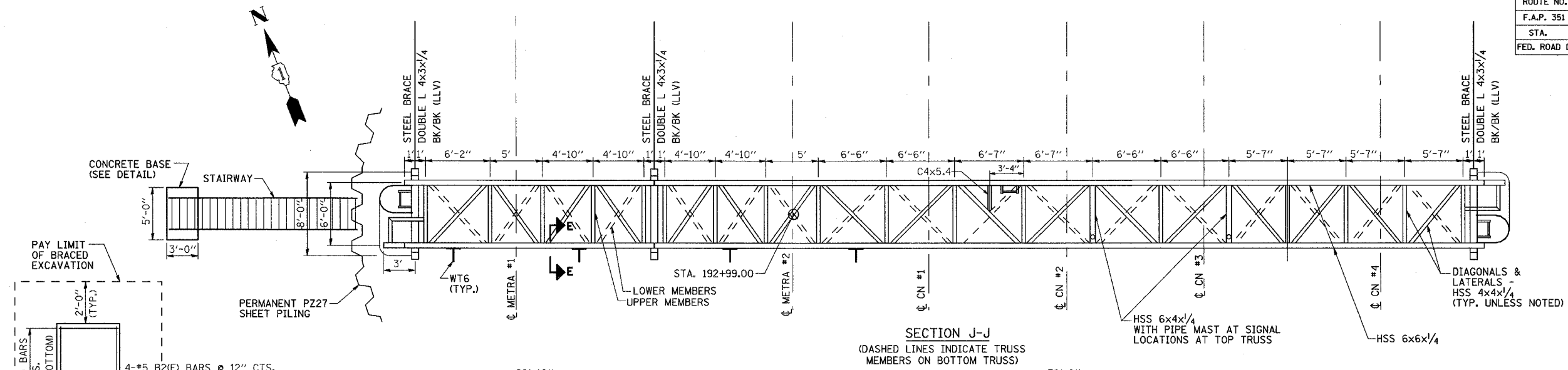


3/13/2008 2:39:18 PM

q:\17049\069\catenary\plans-catstructures\10\_n\_cat\_signal\_plan&s\_elev.dgn

ROUTE NO.	SECTION	COUNTY	TOTAL SHEETS	SHEET NO.
F.A.P. 351	2008-001VB	COOK	579	313
STA.		TO STA.		
FED. ROAD DIST. NO. 7		ILLINOIS	FED. AID PROJECT	
CONTRACT NO. 60E10				

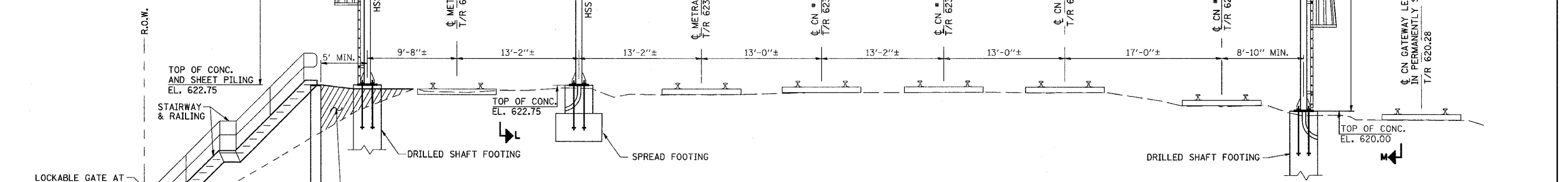


**BILL OF MATERIAL**

BAR	NO.	SIZE	LENGTH	SHAPE
B1(E)	12	#5	4'-8"	—
B2(E)	8	#5	2'-8"	—

ITEM	UNIT	QTY
CONCRETE STRUCTURES	CU YD	2.2
REINFORCEMENT BARS, EPOXY COATED	POUND	80
BRACED EXCAVATION	CU YD	9.3
PERMANENT ACCESS STAIRWAY	LUMP SUM	1



**SOUTH ELEVATION**  
(LOOKING NORTH, FOR CLARITY ONLY NEAR TRUSS SHOWN)

- NOTES:**
- SEE SHT. CS-12 FOR SECTIONS H-H, K-K, L-L, M-M
  - SEE SHT. CS-13 FOR SECTION G-G
  - SEE SHT. CS-15 FOR SECTIONS E-E, F-F
  - SEE SHT. CH-06 FOR CATENARY HARDWARE ATTACHED TO THIS STRUCTURE

REVISIONS	
NAME	DATE

ILLINOIS DEPARTMENT OF TRANSPORTATION  
US RTE 6 FROM I-294 TO IL RTE 1  
METRA OVER 159TH ST

**CATENARY STRUCTURES  
BRIDGE STRUCTURE  
SOUTH ELEVATION**

SHT. CS-10 OF CS-17  
DATE 2/21/2008

DRAWN BY SOI  
CHECKED BY DEM