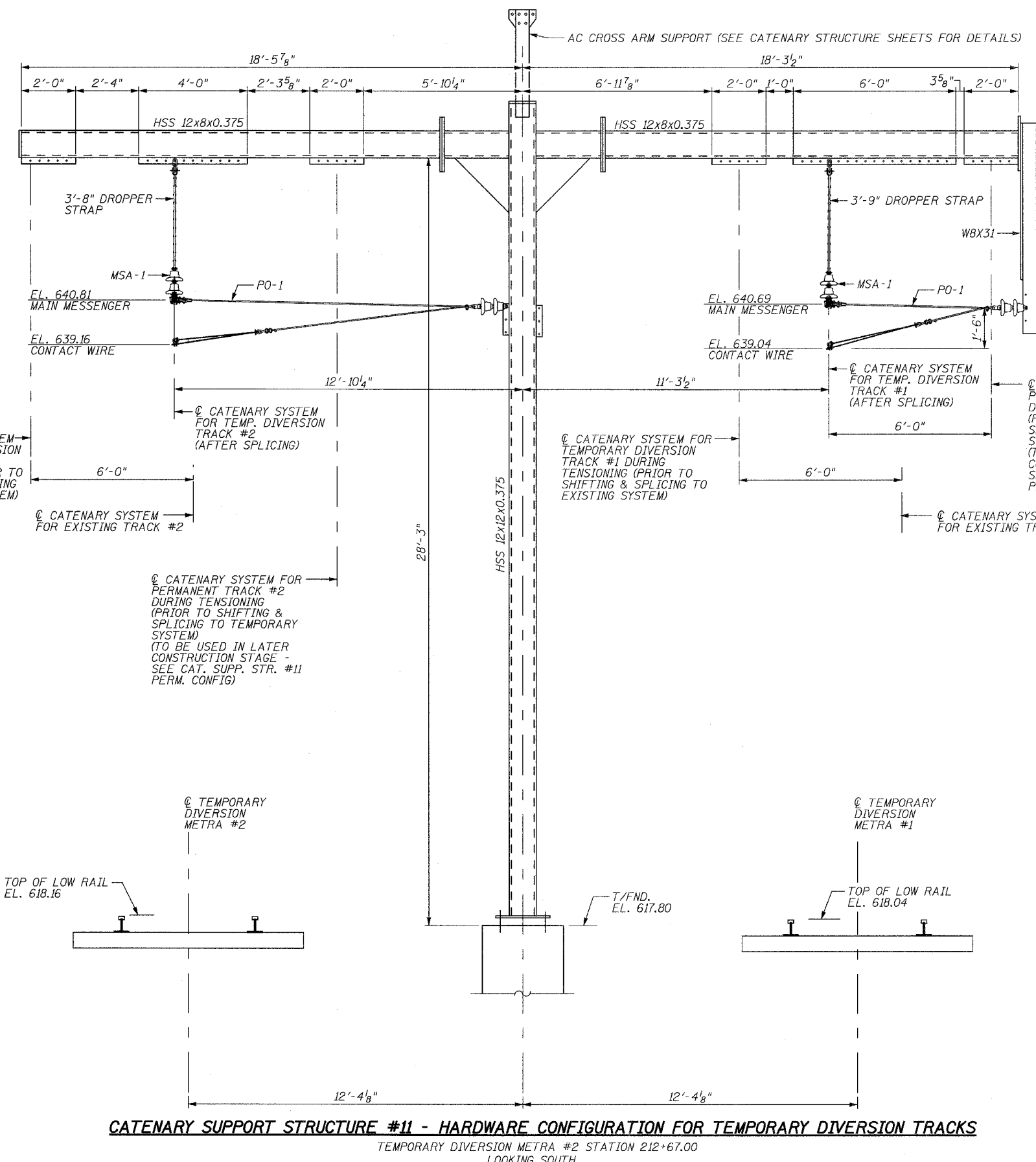


ROUTE NO.	SECTION	COUNTY	TOTAL SHEETS	SHEET NO.
F.A.P. 351	2008-001VB	COOK	579	339
STA.		TO STA.		
FED. ROAD DIST. NO. 7		ILLINOIS	FED. AID PROJECT	
CONTRACT NO. 60E10				



BILL OF MATERIAL

QTY.	UNIT	MARK	DESCRIPTION	REF. DWG.
2	EACH	MSA-1	MESSENGER SUPPORT ASSEMBLY	CH-05
2	EACH	PO-1	PULL-OFF ASSEMBLY	CH-04

CATENARY SUPPORT STRUCTURE #11 - HARDWARE CONFIGURATION FOR TEMPORARY DIVERSION TRACKS

TEMPORARY DIVERSION METRA #2 STATION 212+67.00
LOOKING SOUTH

REVISIONS	
NAME	DATE

ILLINOIS DEPARTMENT OF TRANSPORTATION
US RTE 6 FROM I-294 TO IL RTE 1
METRA OVER 159TH STREET

CATENARY HARDWARE
CAT. SUPP. STR. #11 - TEMP. CONFIG.

SHT. CH-19 OF CH-20
DATE 2/21/2008

DRAWN BY PMV
CHECKED BY MAD

3/13/2008 2:39:36 PM

q:\17049\069\catenary\plans-cathardware\pole 11 temp hardware.dgn