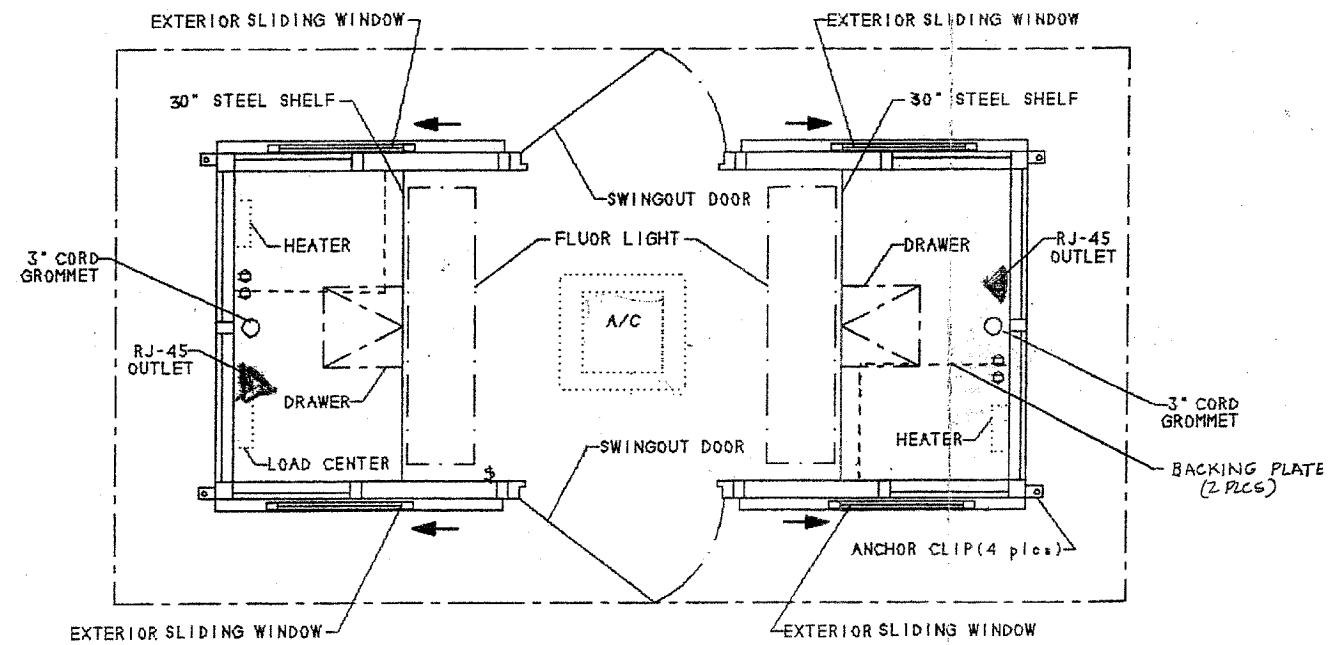
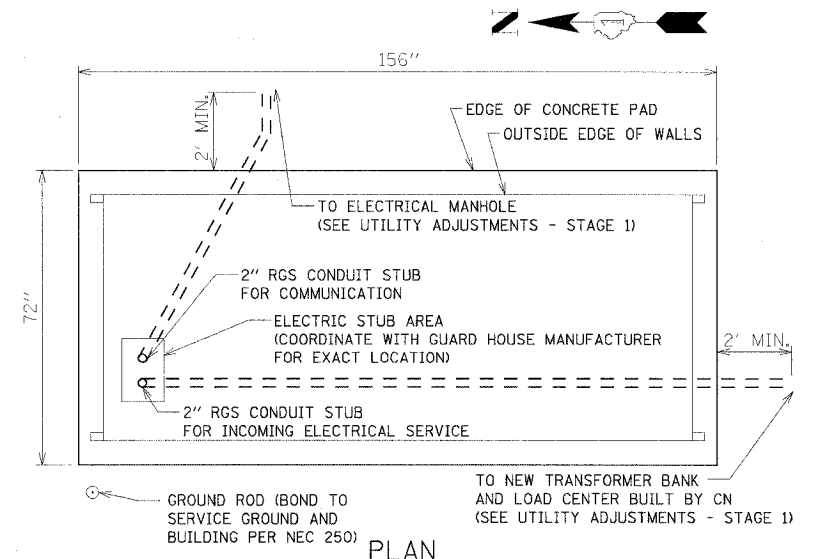


F.A.P. RTE.	SECTION	COUNTY	TOTAL SHEETS	SHEET NO.
351	2008-001VB	COOK	579	348
STA.		TO STA.		
FED. ROAD DIST. NO.	ILLINOIS	FED. AID PROJECT		

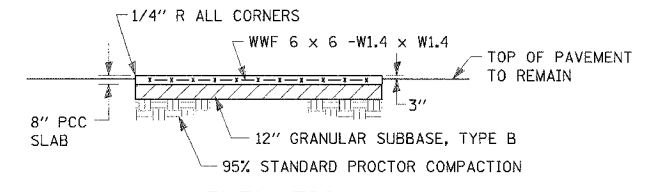
CONTRACT NO. 60E10



FLOOR PLAN

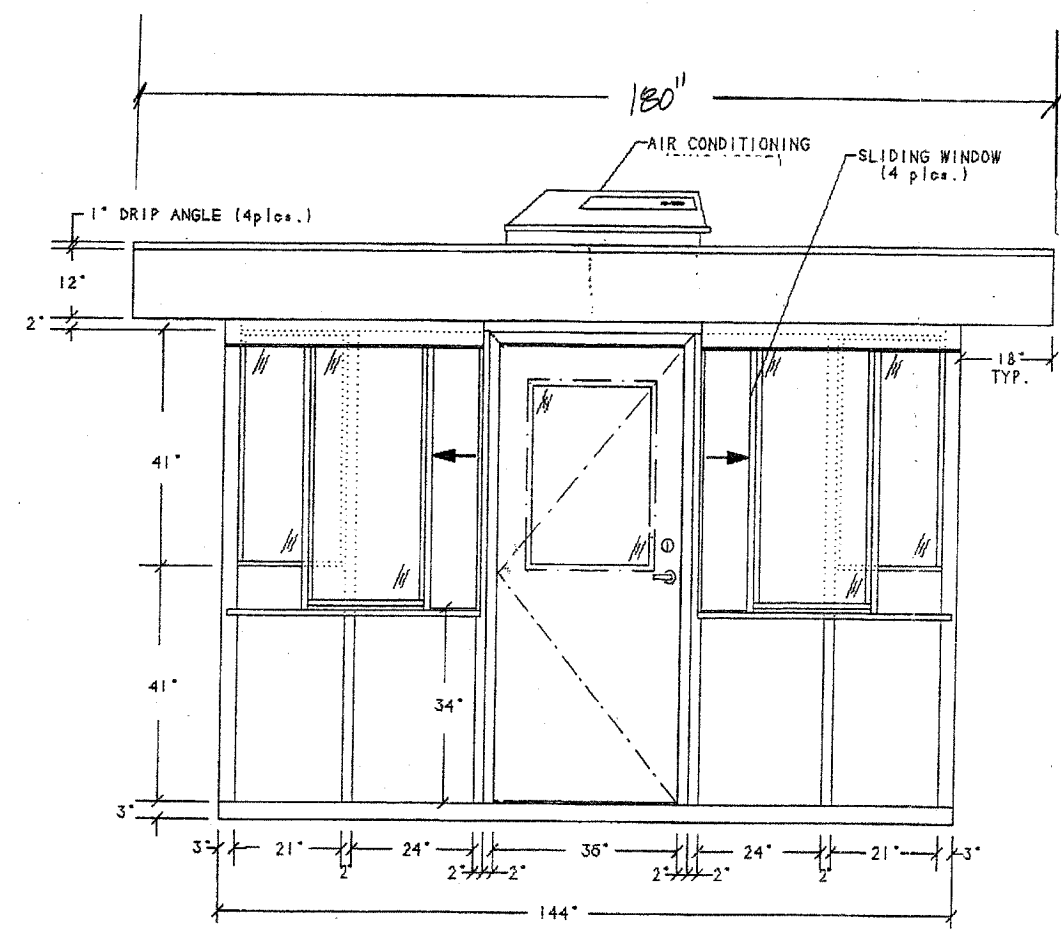


PLAN

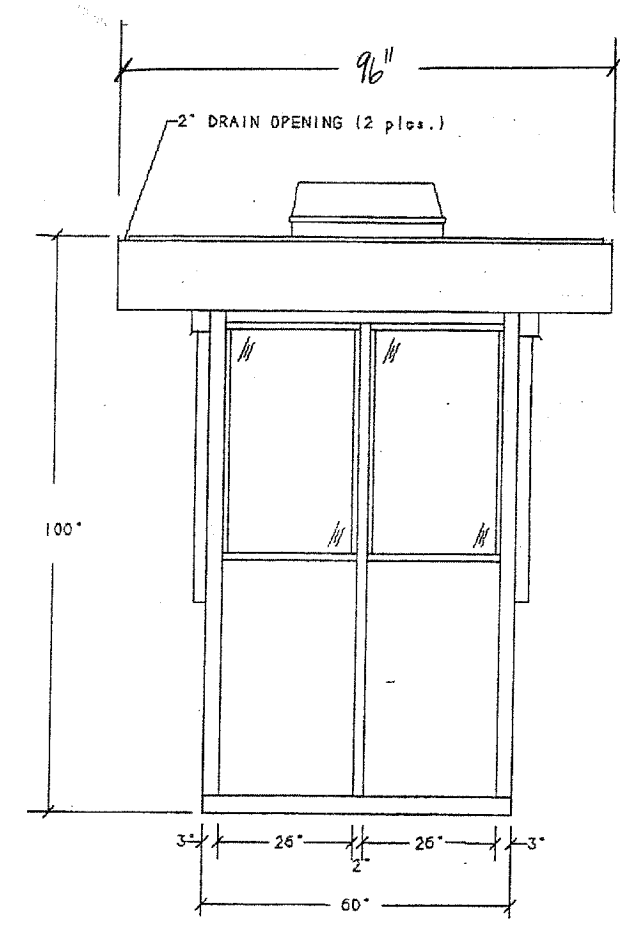


ELEVATION

CONCRETE PAD FOR GUARD HOUSE



WEST ELEVATION
EAST ELEVATION SIMILAR



SOUTH ELEVATION
NORTH ELEVATION SIMILAR
BUT WITH NO DRAIN OPENINGS

NOTE:
SEE SPECIAL PROVISION "GUARD HOUSE RELOCATION" FOR SPECIFIC REQUIREMENTS FOR THE NEW GUARD HOUSE.

REVISIONS	
NAME	DATE

ILLINOIS DEPARTMENT OF TRANSPORTATION
US RTE 6 FROM LEXINGTON AVE TO FISK AVE
INTERMODAL FACILITY
GUARD HOUSE DETAILS

SHEET 8 OF 8
DATE 02/21/08
DRAWN BY MAD
CHECKED BY DEY