

STATE OF ILLINOIS  
DEPARTMENT OF TRANSPORTATION

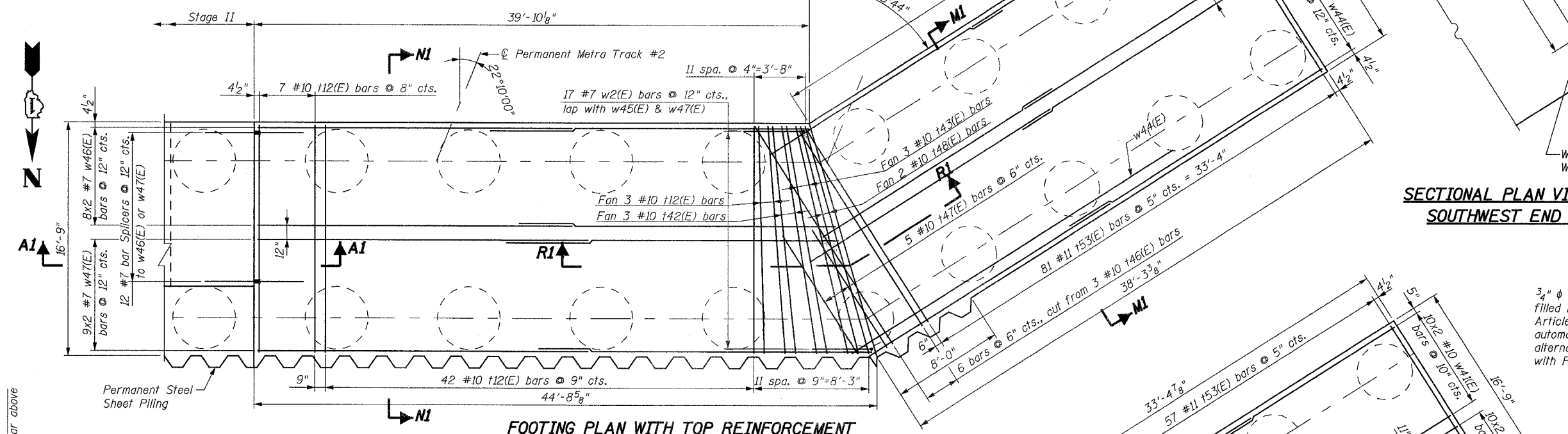
ROUTE NO.	SECTION	COUNTY	TOTAL SHEETS	SHEET NO.
F.A.P. 351	2008-001VB	COOK	579	371
FED. ROAD DIST. NO. 7		ILLINOIS	FED. AID PROJECT-	

CONTRACT NO. 60E10

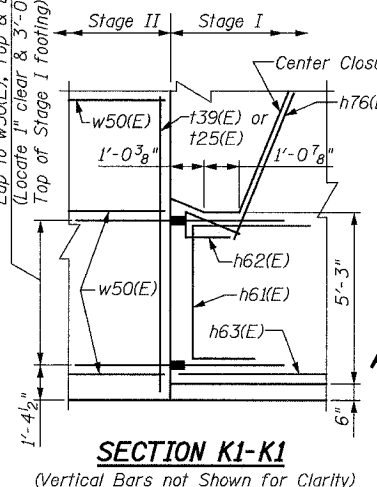
SHEET NO. 23  
37 SHEETS

Notes:

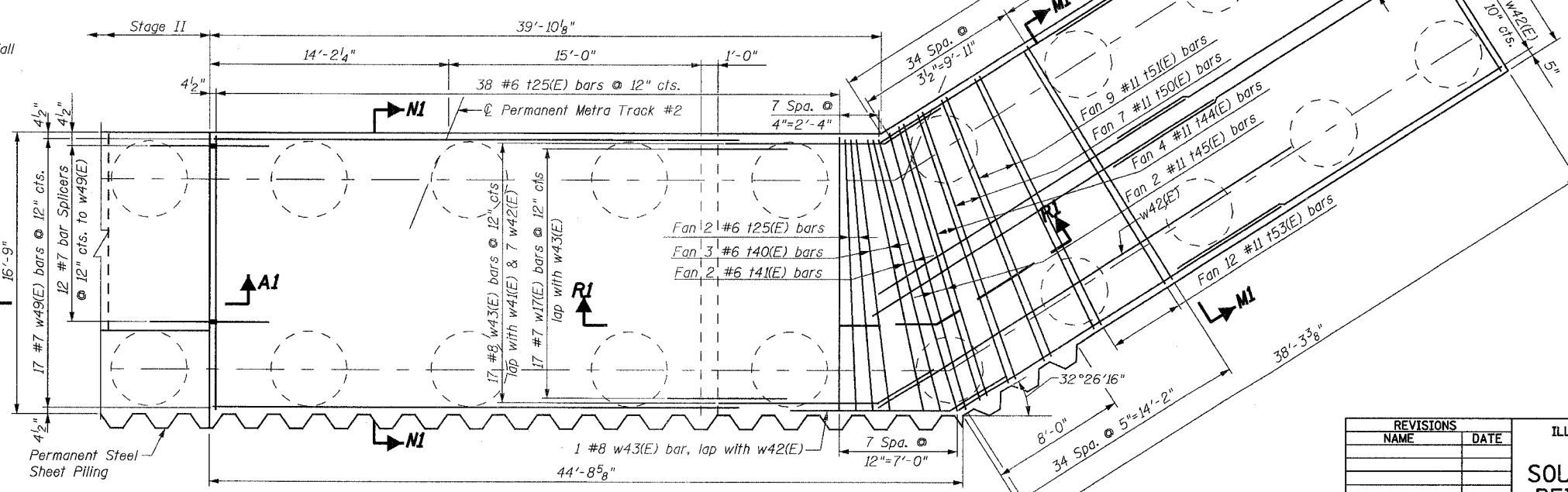
- For Bill of Materials, see Sheet No. 27 of 37.
- For Sections M1-M1, NI-NI, and R1-R1, see Sheet No. 24 of 37.
- For additional locations of Sections M1-M1, NI-NI, and R1-R1, see Sheet No. 22 of 37.
- Nine Drilled Shafts shall be drilled to Elevation 579.00 as shown in Section M1-M1 and eight Drilled Shafts shall be drilled to Elevation 582.50 as shown in Section NI-NI. Quantities and Detailing are for the estimated Elevations shown on the Plans. The actual conditions encountered in each Shaft may differ, and the Drilled Shaft and Reinforcement Quantities shall be adjusted accordingly as directed by the Engineer and paid for at the corresponding Unit Bid Price.
- Do not excavate deeper than bottom of footing elevation shown without written permission from Engineer.
- For location of section K1-K1, see Sheet No. 22 of 37.
- For location of Detail 6, see Sheet Nos. 24 & 26 of 37.
- For Section A1-A1, see Sheet No. 26 of 37.



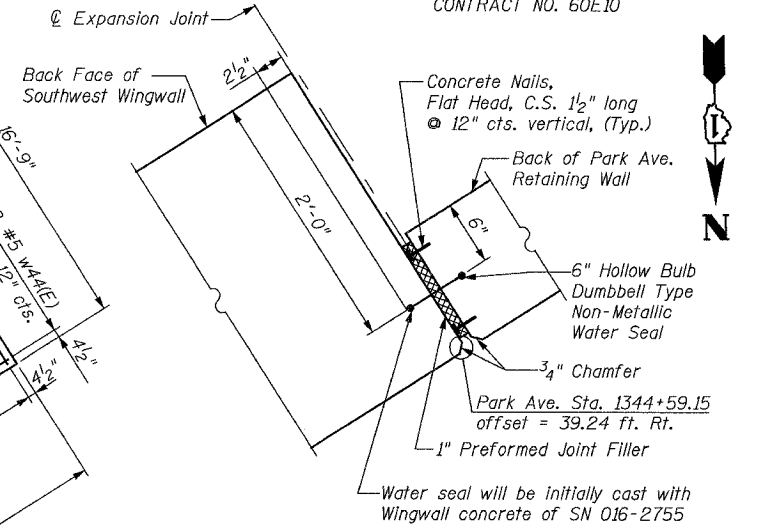
FOOTING PLAN WITH TOP REINFORCEMENT



SECTION K1-K1  
(Vertical Bars not Shown for Clarity)

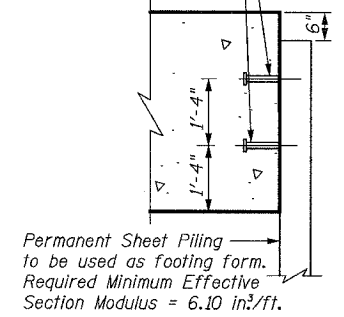


FOOTING PLAN WITH BOTTOM REINFORCEMENT



SECTIONAL PLAN VIEW OF EXPANSION JOINT AT SOUTHWEST END OF SOUTHWEST WINGWALL

3/4" φ x 8" Granular or solid flux filled headed studs conforming to Article 1006.32 of the Std. Spec.'s automatically end welded at 12" alternate centers. Cost included with Permanent Steel Sheet Piling.



PERMANENT SHEET PILING ATTACHMENT TO FOOTING (DETAIL 6)

5/16/2008 4:33:55 PM 5/16/2008 4:33:55 PM 5/16/2008 4:33:55 PM

DESIGNED	DRS
CHECKED	JJG
DRAWN	DRS/SOI
CHECKED	JJG

**URS**  
100 South Wacker Drive,  
Suite 500  
Chicago, IL 60606  
(312) 939-1000

REVISIONS	
NAME	DATE

ILLINOIS DEPARTMENT OF TRANSPORTATION  
US RTE 6 FROM I-294 TO IL RTE 1  
**SOUTH ABUTMENT FOOTING REINFORCEMENT, STAGE I**  
METRA & CN BRIDGE 20.6  
OVER U.S. RTE. 6 (159TH STREET)  
STATION 91+24.94 STRUCTURE NO. 016-2755  
SCALE: DATE: 2/21/2008