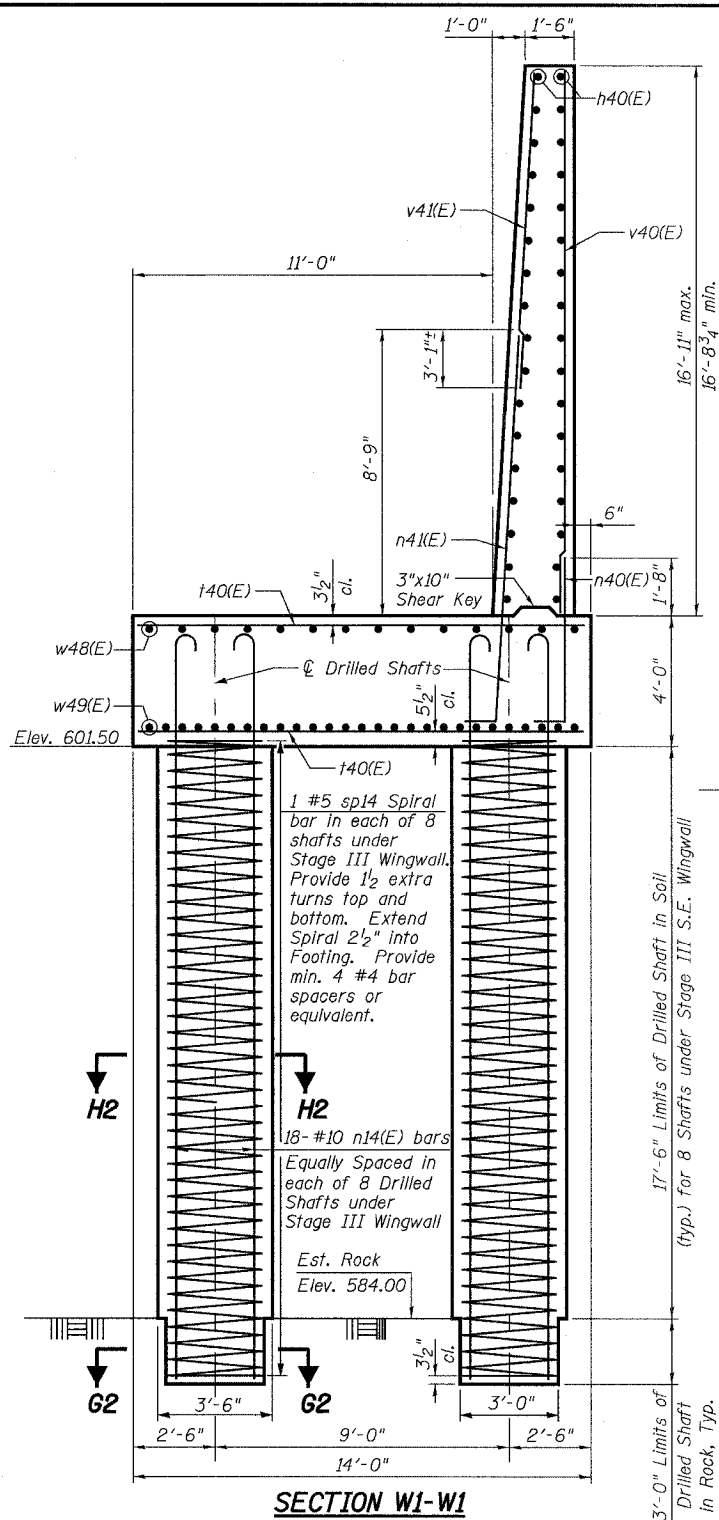


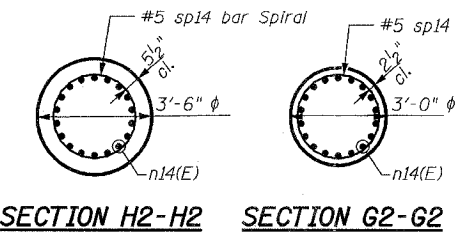
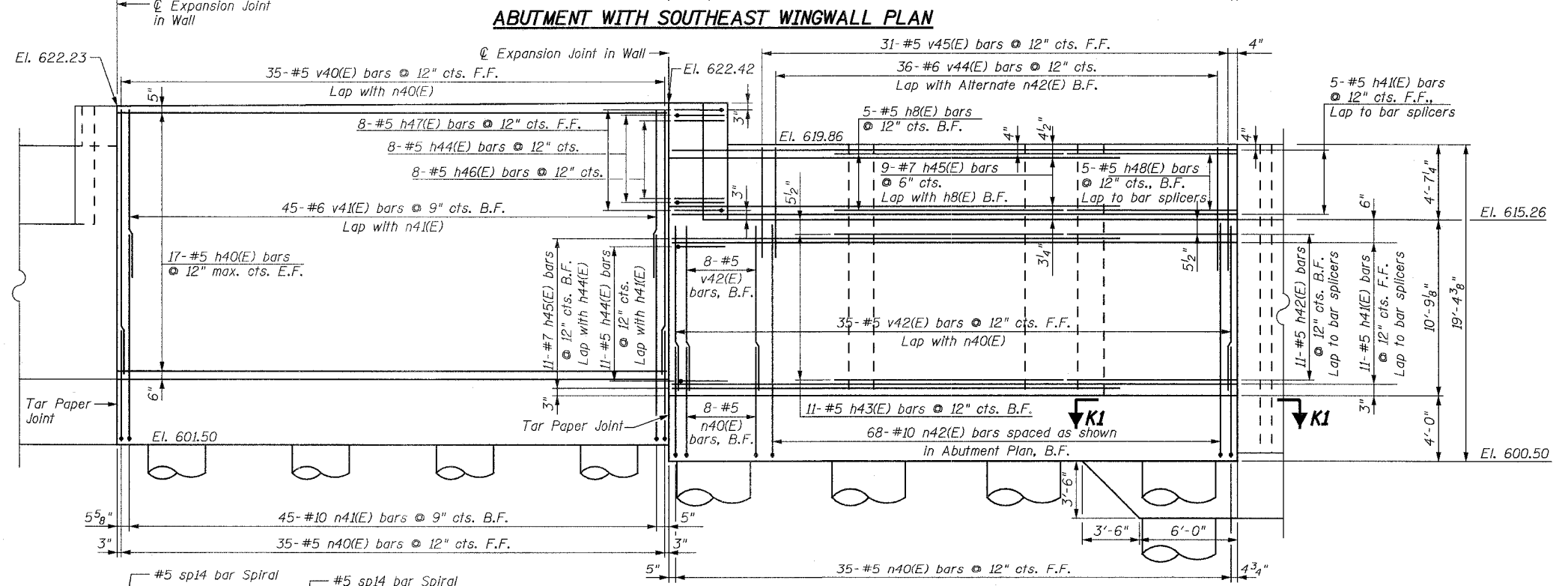
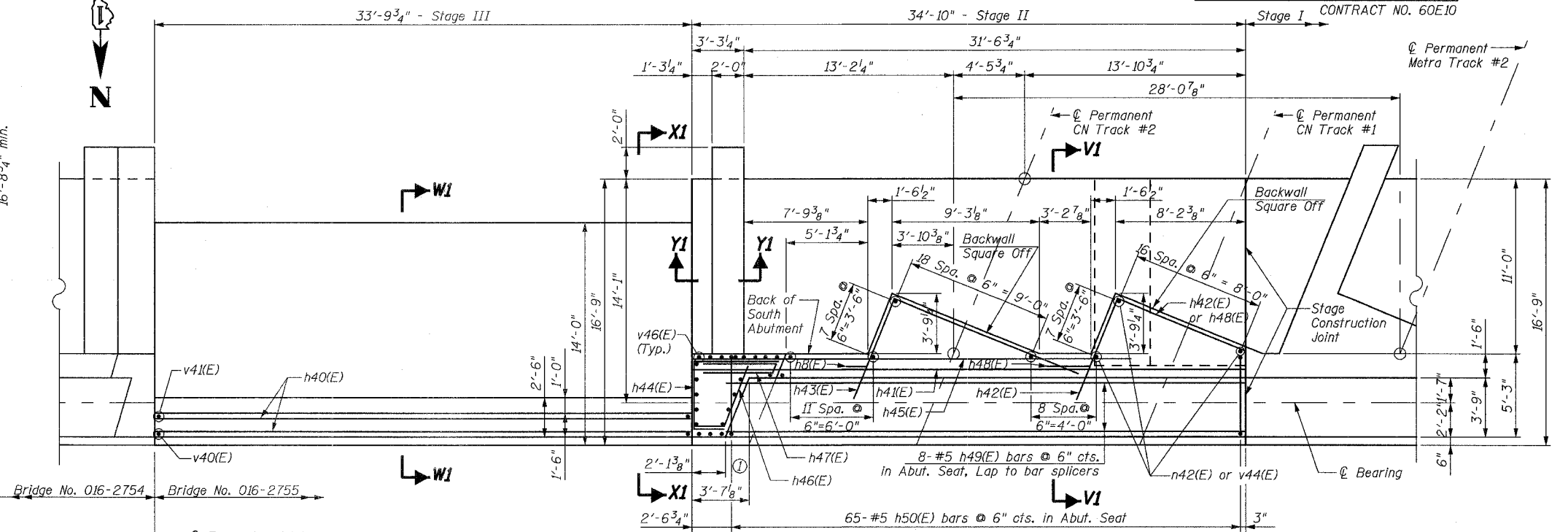
STATE OF ILLINOIS  
DEPARTMENT OF TRANSPORTATION

ROUTE NO.	SECTION	COUNTY	TOTAL SHEETS	SHEET NO.
F.A.P. 351	2008-001VB	COOK	579	373
FED. ROAD DIST. NO. 7		ILLINOIS	FED. AID PROJECT-	CONTRACT NO. 60E10

SHEET NO. 25  
37 SHEETS



- NOTES:**
- For Section V1-V1 and additional locations of Sections V1-V1, W1-W1, X1-X1 and Y1-Y1, and for limits of Permanent Sheet Piling, see Sheet No. 26 of 37.
  - For Sections X1-X1 and Y1-Y1, see Sheet No. 27 of 37.
  - Ⓛ Denotes Beam Number
  - For additional reinforcement required in each Backwall Square Off, see Abutment Backwall Square Off Plan on Sheet No. 26 of 37.
  - For 1 1/4" deep recess in backwall adjacent to Maskwall, see Section D-D on Sheet No. 8 of 37.
  - For Plates and Angles required for deck joints in backwall, see Section P-P on Sheet No. 7 of 37.
  - Cost of Pipe Sleeves in closure wall is included with Concrete Structures.
  - For Section K1-K1, see Sheet 23 of 37.



REVISIONS	
NAME	DATE

ILLINOIS DEPARTMENT OF TRANSPORTATION  
US RTE 6 FROM I-294 TO IL RTE 1  
**SOUTH ABUTMENT & DETAILS  
STAGES II & III**

METRA & CN BRIDGE 20.6  
OVER U.S. RTE. 6 (159TH STREET)  
STATION 91+24.94 STRUCTURE NO. 016-2755  
SCALE: DATE: 2/21/2008

**URS**  
100 South Wacker Drive,  
Suite 500  
Chicago, IL 60606  
(312) 939-1000

5/16/2008 5:06:42 PM V:\17049\069\structures\2755\_wrr\final design.dwg V:\5-s-abutdet-stan&u.dgn