

STATE OF ILLINOIS
DEPARTMENT OF TRANSPORTATION

ROUTE NO.	SECTION	COUNTY	TOTAL SHEETS	SHEET NO.
F.A.P. 351	2008-001VB	COOK	579	377
FED. ROAD DIST. NO. 7		ILLINOIS	FED. AID PROJECT	

SHEET NO. 29
37 SHEETS

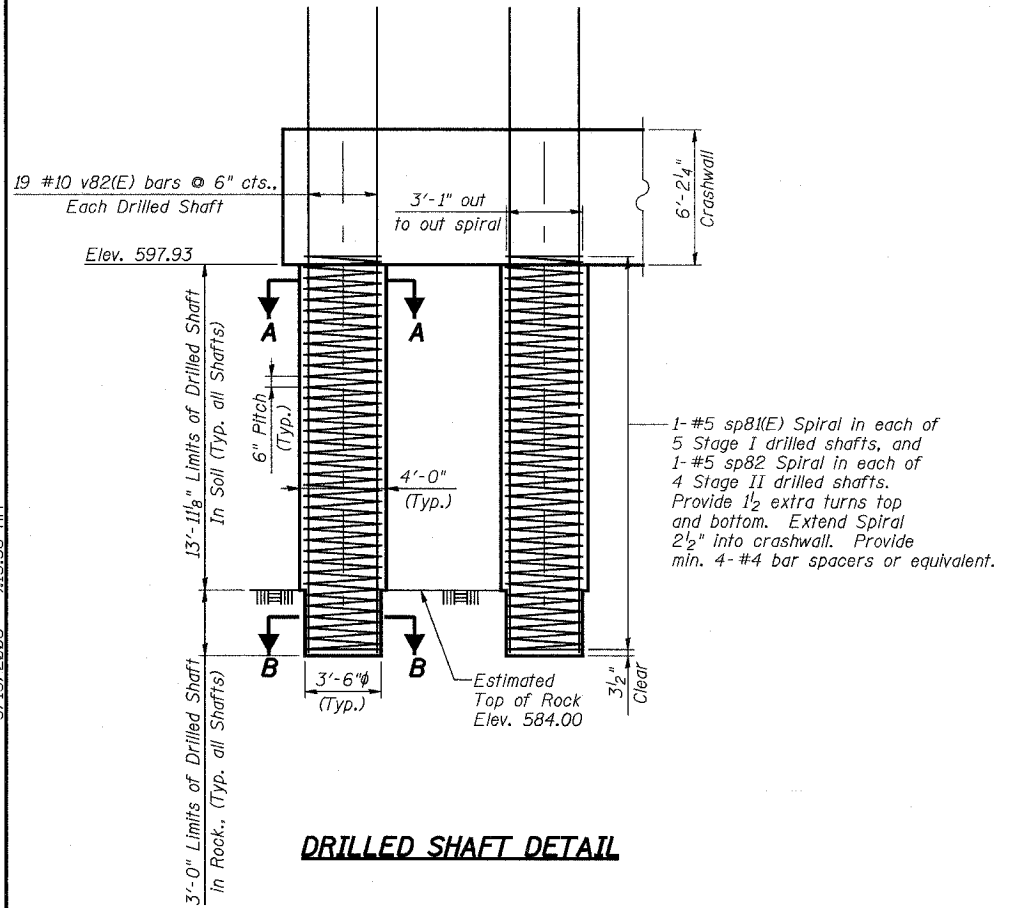
CONTRACT NO. 60E10

PIER BILL OF MATERIAL

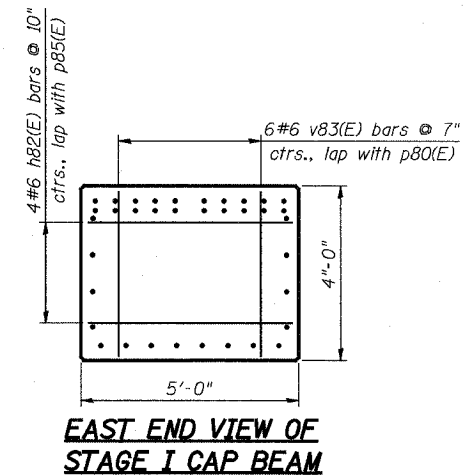
BAR	NO. STAGE I	NO. STAGE II	SIZE	LENGTH	SHAPE
h80(E)	66	50	#5	9'-7"	U
h81(E)	28		#5	23'-3"	—
h82(E)		14	#5	34'-9"	—
h83(E)	32	24	#5	9'-0"	—
h84(E)	8	8	#5	4'-6"	—
h85(E)	16		#10	29'-11"	—
h86(E)		8	#10	34'-3"	U
h87(E)	4		#6	4'-6"	—
p80(E)	36		#10	29'-11"	—
p81(E)		18	#10	34'-3"	U
p82(E)	10		#10	15'-8"	U
s80(E)	160	84	#5	14'-1"	U
s81(E)	33	26	#5	11'-9"	U
s82(E)	13	13	#5	5'-3"	U
sp80(E)	5	4	#5	13'-9"	W
sp81(E)	5		#5	16'-10"	W
sp82		4	#5	16'-10"	W
u80(E)	14	7	#5	8'-7"	U
u81(E)	6	6	#6	13'-6"	U
v80(E)	98	75	#5	5'-6"	—
v81(E)	95	76	#11	15'-9"	—
v82(E)	95	76	#10	27'-0"	—
v83(E)	6		#6	3'-6"	—
ITEM	UNIT	QUANTITY			
Concrete Structures	Cu. Yd.	175.4			
Reinforcement Bars	Lbs	1360			
Reinforcement Bars, Epoxy Coated	Lbs.	59830			
Concrete Sealer	Sq. Ft.	393			
Structure Excavation	Cu. Yd.	111			
Non-Special Waste Disposal	Cu. Yd.	102.3			
Drilled Shaft in Soil	Cu. Yd.	58			
Drilled Shaft in Rock	Cu. Yd.	10			
Bar Splicers	Each	48			

(E) bars @ 7"
with p80(E)

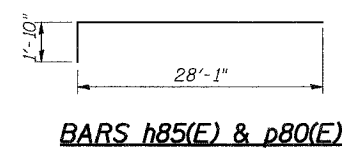
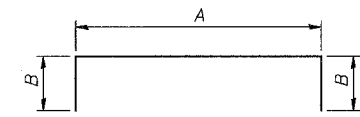
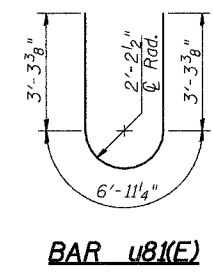
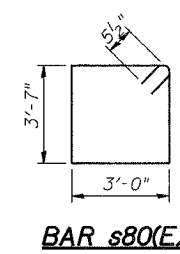
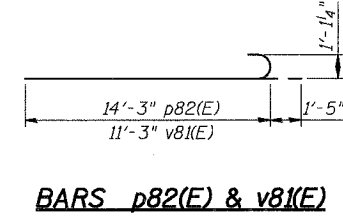
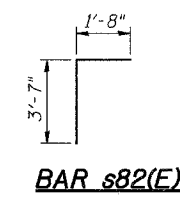
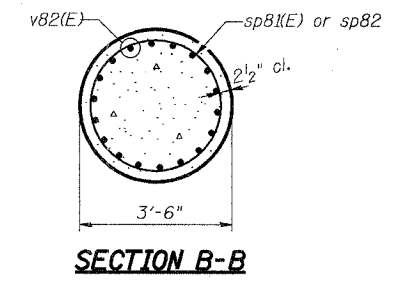
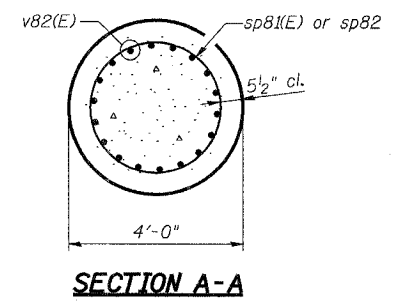
3/13/2008 9:15:36 AM g:\7049\069\structures\2755_w.r.\final_design_dwg\29-pier_det.dwg



DRILLED SHAFT DETAIL



DESIGNED	DRS
CHECKED	JJG
DRAWN	SOI
CHECKED	JJG



BENDING DIMENSIONS

BAR	A	B
h80(E)	4'-5"	2'-7"
h86(E)	30'-7"	1'-10"
p81(E)	30'-7"	1'-10"
s81(E)	4'-7"	3'-7"
u80(E)	4'-3"	2'-2"

Notes:

- Reinforcement Bars designated (E) shall be epoxy coated.
- Length of Spiral given is height of Spiral. Weight includes weight of spacers for Spiral.
- Drilled Shafts shall be drilled to Elevation 581.00. Quantities and Detailing are for the estimated Elevations shown on the Plans. The actual conditions encountered in each Shaft may differ and the Drilled Shaft and Reinforcement Quantities shall be adjusted accordingly as directed by the Engineer and paid for at the corresponding Unit Bid Price.

REVISIONS	
NAME	DATE

ILLINOIS DEPARTMENT OF TRANSPORTATION
US RTE 6 FROM I-294 TO IL RTE 1
PIER DETAILS
METRA & CN BRIDGE 20.6
OVER U.S. RTE. 6 (159TH STREET)
STATION 91+24.94 STRUCTURE NO. 016-2755
SCALE: DATE: 2/21/2008

URS
100 South Wacker Drive,
Suite 500
Chicago, IL 60606
(312) 939-1000