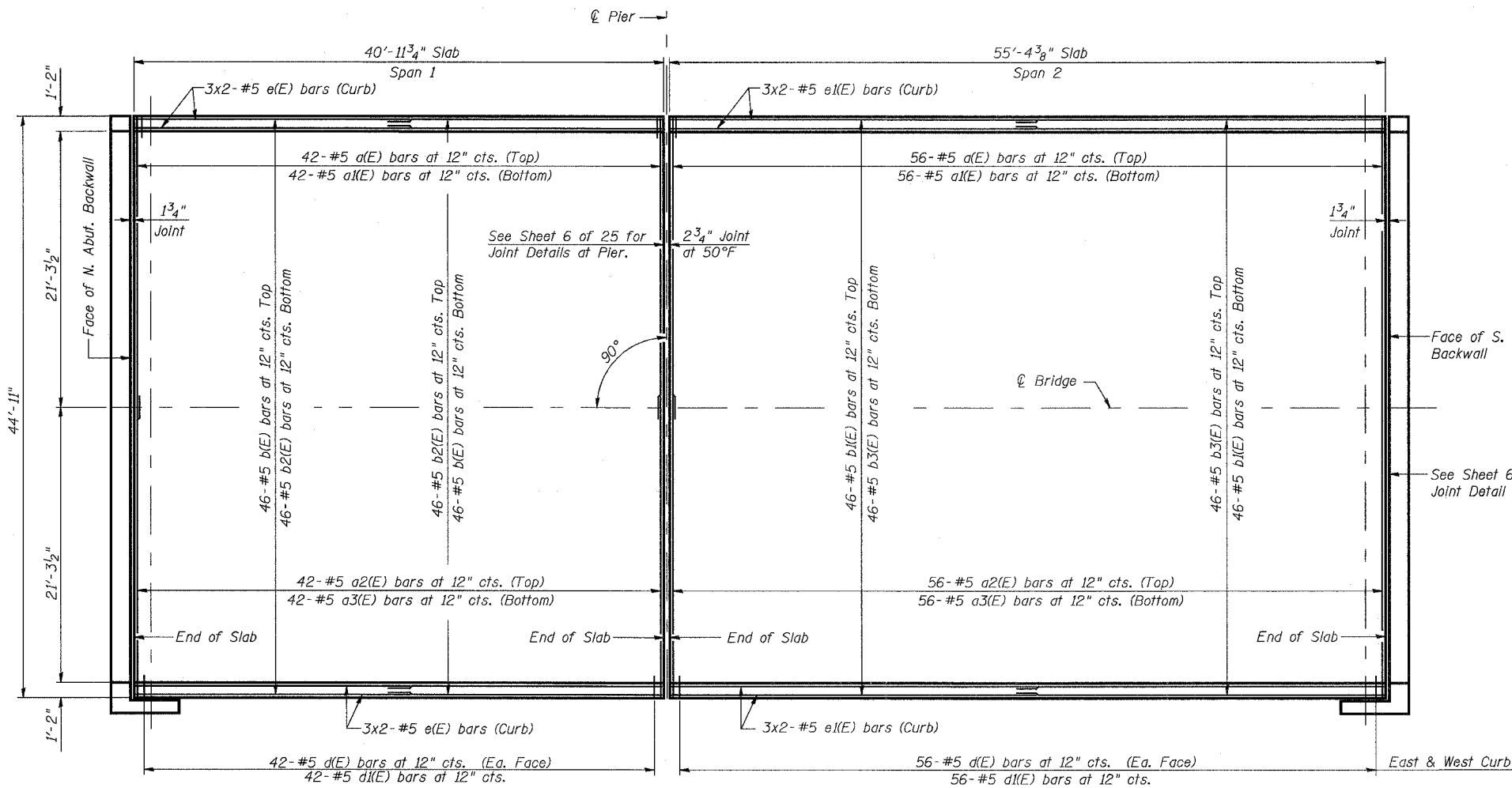


STATE OF ILLINOIS
DEPARTMENT OF TRANSPORTATION

ROUTE NO.	SECTION	COUNTY	TOTAL SHEETS	SHEET NO.
F.A.P. 351	2008-001VB	COOK	579	390
FED. ROAD DIST. NO. 7		ILLINOIS	FED. AID PROJECT	

CONTRACT NO. 60E10

SHEET NO. 5
25 SHEETS

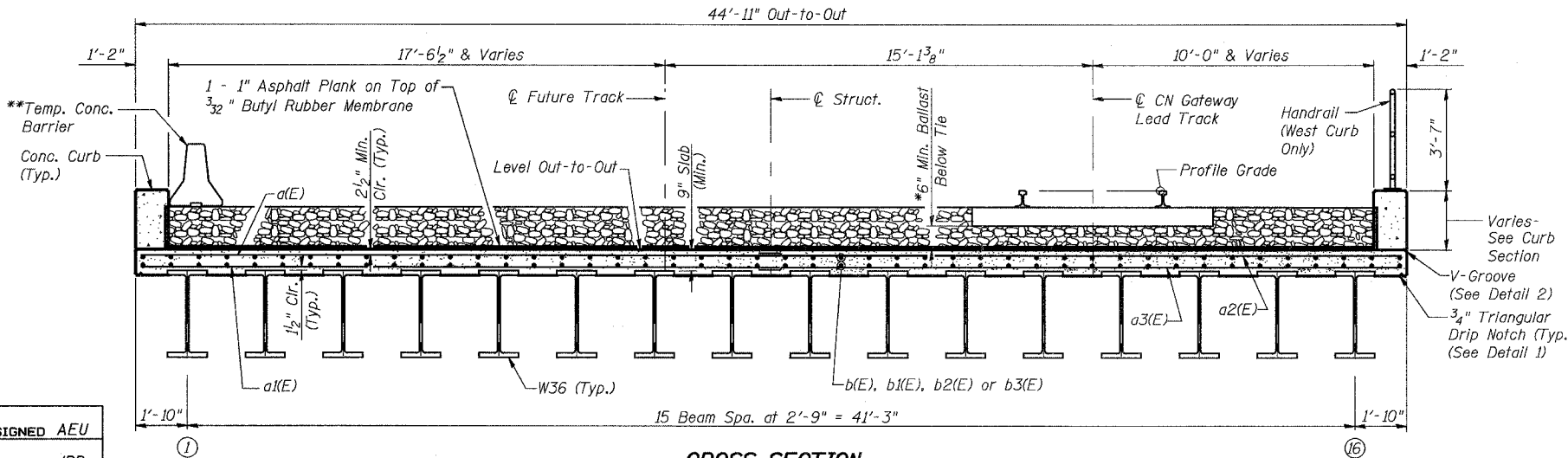
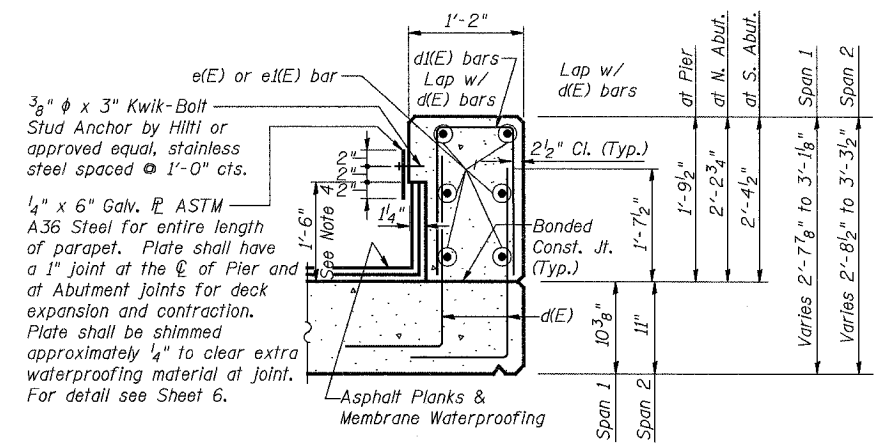


BAR d(E)

BAR d(E)

**SUPERSTRUCTURE
BILL OF MATERIAL**

Bar	No.	Size	Length	Shape
a(E)	98	#5	28'-9"	—
a(E)	98	#5	16'-5"	—
a2(E)	98	#5	17'-9"	—
a3(E)	98	#5	30'-1"	—
b(E)	92	#5	15'-4"	—
b(E)	92	#5	35'-0"	—
b2(E)	92	#5	27'-3"	—
b3(E)	92	#5	22'-0"	—
d(E)	392	#5	2'-8"	J
d(E)	196	#5	3'-9"	□
e(E)	24	#5	21'-4"	—
e(E)	24	#5	28'-6"	—
Concrete Superstructure		Cu. Yd.	149.3	
Reinforcement Bars, Epoxy Coated		Pound	22,170	
Membrane Waterproofing (Special)		Sq. Ft.	5093	



DETAIL 2

DETAIL 1

- Notes:
1. Reinforcement bars designated (E) shall be Epoxy Coated.
 2. Min. bar lap for a #5 bar shall be 2'-0".
 3. For Handrail Details see Sheet 7 of 25.
 4. Blockout for 3/32" Butyl Rubber Membrane and 2-1/2" Asphalt Planks.
 5. See Sheet 6 of 25 for Membrane Waterproofing Details at Joints.
 6. All exposed edges shall have 3/4" chamfer, except as noted.

REVISIONS	
NAME	DATE

ILLINOIS DEPARTMENT OF TRANSPORTATION
US RTE 6 FROM I-294 TO IL RTE 1
SUPERSTRUCTURE

CN GATEWAY LEAD TRACK
BRIDGE 20.6E OVER U.S. RTE. 6 (159TH STREET)
STATION 93+69.01 STRUCTURE NO. 016-2819
SCALE: 3/8"=1'-0" DATE: 2/21/2008

URS
100 South Wacker Drive,
Suite 500
Chicago, IL 60606
(312) 939-1000

3/13/2008 11:30:08 AM
c:\17049_069\structures\2819_w_r\dwg\05_superstructure.dgn

DESIGNED AEU
CHECKED JPB
DRAWN AEU
CHECKED JPB

**See SN 016-2820 Plans for quantities and details.

6" Min. Ballast at Pier
11" Min. Ballast at Bearings (Abut's)