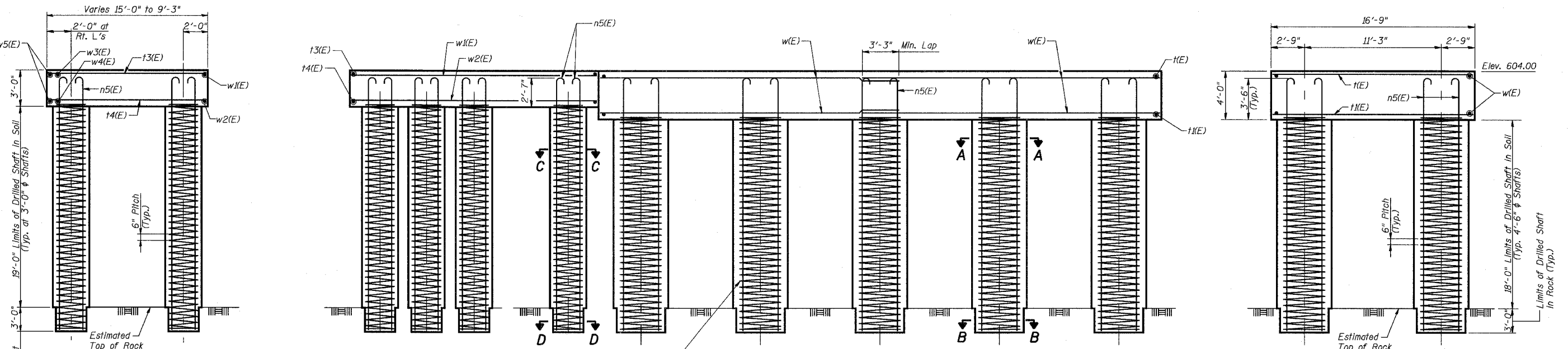
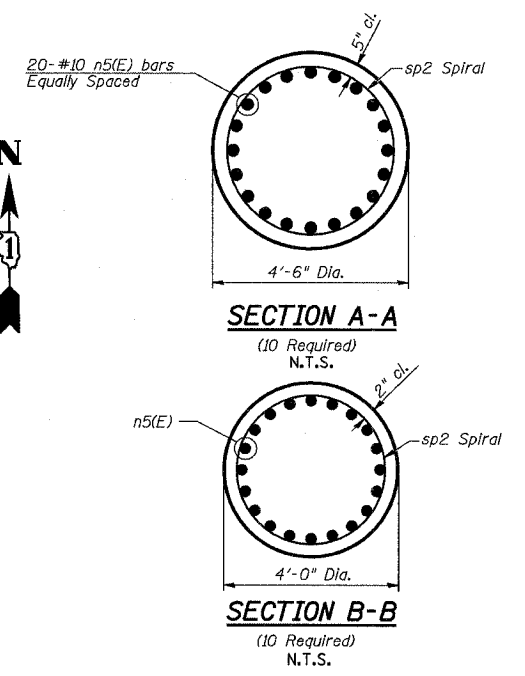
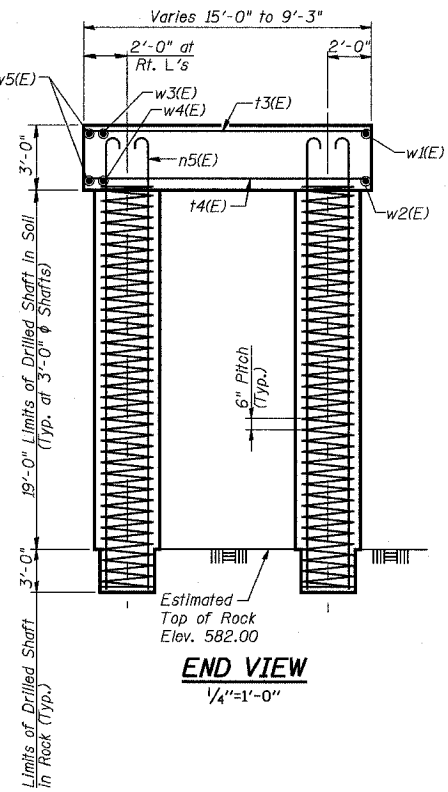
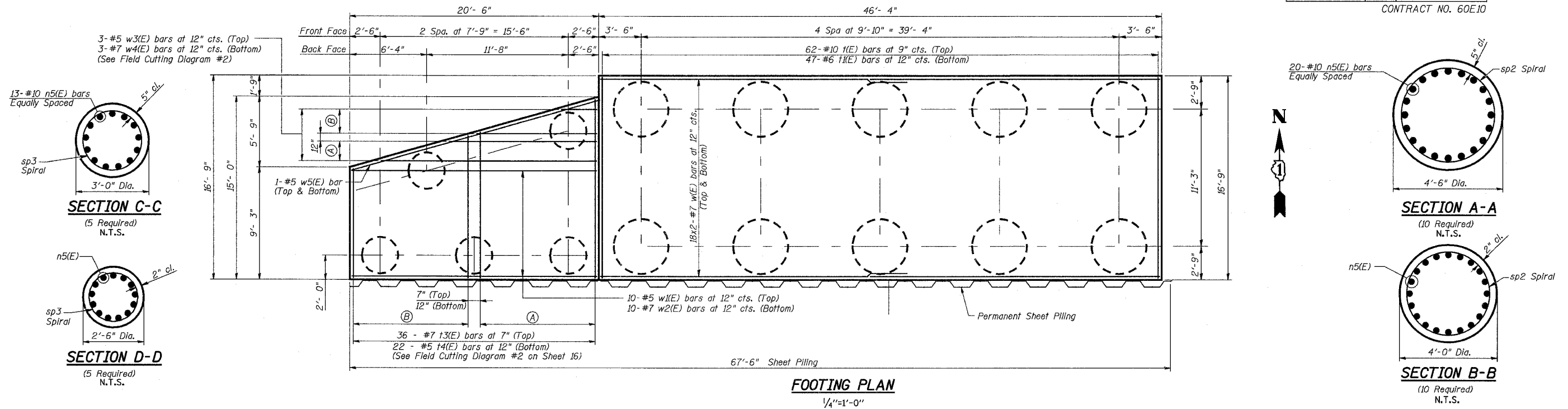


STATE OF ILLINOIS  
DEPARTMENT OF TRANSPORTATION

ROUTE NO.	SECTION	COUNTY	TOTAL SHEETS	SHEET NO.
F.A.P. 351	2008-001VB	COOK	579	400
FED. ROAD DIST. NO. 7	ILLINOIS	FED. AID PROJECT-	CONTRACT NO. 60E10	

SHEET NO. 15  
25 SHEETS



- NOTES:
1. Reinforcement designated (E) shall be epoxy coated.
  2. Work this sheet with Sheets 12 through 16.
  3. For Field Cutting Diagram #1 and #2 see Sheet 16.
  4. Drilled Shafts shall be drilled to Elevation 579.00. Quantities and Detailing are for the estimated Elevations shown on the Plans. The actual conditions encountered in each Shaft may differ and the Drilled Shaft and Reinforcement Quantities shall be adjusted accordingly as directed by the Engineer and paid for at the corresponding Unit Bid Price.
  5. See Sheet 13 for Permanent Sheet Piling Detail.
  6. Spiral sp2 outer diameter = 3'-8".  
Spiral sp3 outer diameter = 2'-2".

Min. Lap Splice  
for Spiral = 2'-0"

3/13/2008 11:30:13 AM c:\17049\_069\structures\2819\_w\_rr\dwg\15\_n\_abut.fva & shaft.dwg

DESIGNED	AEU
CHECKED	JPB
DRAWN	AEU
CHECKED	JPB

**URS**  
100 South Wacker Drive,  
Suite 500  
Chicago, IL 60606  
(312) 939-1000

REVISIONS	
NAME	DATE

ILLINOIS DEPARTMENT OF TRANSPORTATION  
US RTE 6 FROM I-294 TO IL RTE 1  
**NORTH ABUTMENT  
FOOTING & DRILLED SHAFTS**  
CN GATEWAY LEAD TRACK  
BRIDGE 20.6E OVER U.S. RTE. 6 (159TH STREET)  
STATION 93+69.01 STRUCTURE NO. 016-2819  
SCALE: AS NOTED DATE: 2/21/2008